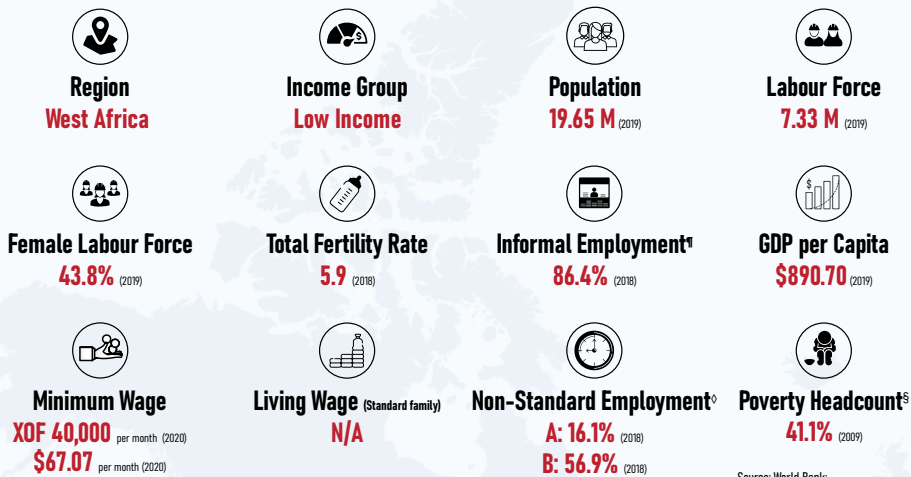
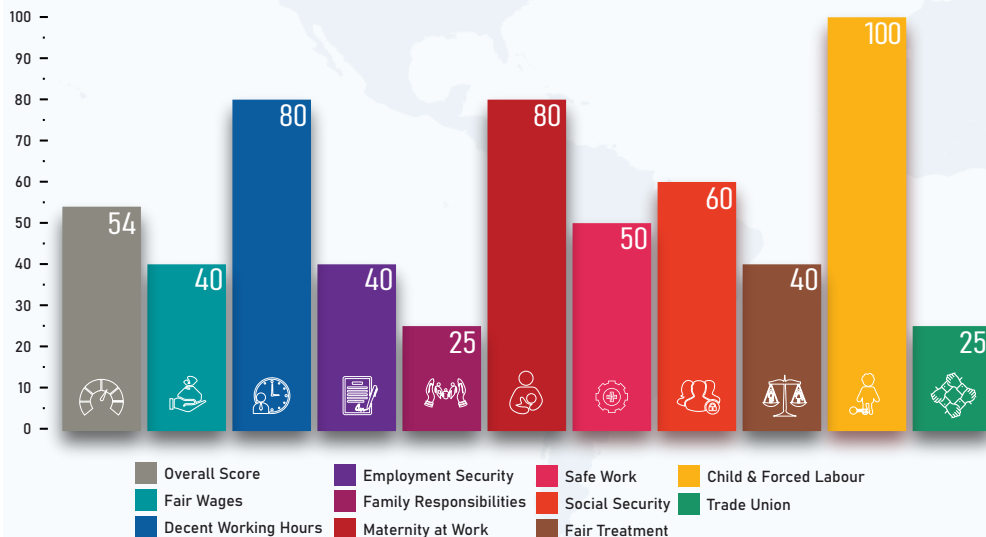


QUICK FACTS



Source: World Bank; International Labour Organization; WageIndicator Living Wages Database

LEGISLATIVE PERFORMANCE



Indicator^{*}

1. Fair Wages

Minimum wage (statutory or negotiated) ❌
Regular wage ✅
Overtime premium (≥125%) ❌
Weekly rest work compensation (time-off) ✅
Night work premium ❌

2. Decent Working Hours

General working hours (≤48 hours per week) ✅
Maximum working hours (≤56 hours per week) ❌
Weekly rest (≥24 hours) ✅
Paid public holidays ✅
Annual leave (≥3 working weeks) ✅

3. Employment Security

Written employment contract ✅
Fixed term contract (≤5 years) ❌
Probation period (≤3 months) ❌
Termination notice period (1 month) ✅
Severance pay (≥14 days per year of service) ❌

4. Family Responsibilities

Parental leave ❌
Paternity leave (≥1 week) ❌
Flexible working arrangements ❌
Nursing breaks ✅

5. Maternity at Work

Prohibition on inquiring about pregnancy ❌
Maternity leave (≥14 weeks) ✅
Cash maternity benefits (≥66.67% of former wage) ✅
Source of maternity benefits (social insurance or state financing) ✅
Protection from dismissals (pregnancy/maternity) ✅

Score^{*}

40

❌
✅
❌
✅
❌

80

✅
❌
✅
✅
✅

40

✅
❌
❌
✅
❌

25

❌
❌
❌
✅

80

❌
✅
✅
✅
✅

Indicator

6. Safe Work

Personal protective equipment (free of cost) ❌
Training on health and safety ✅
Restriction on work (prejudicial to health of mother or child) ❌
Employment injury benefits ✅

7. Social Security

Old age pension ✅
Survivors' pension ✅
Unemployment benefits ❌
Sickness benefits (≥ 6 months) ❌
Invalidity benefits ✅

8. Fair Treatment

Prohibition of employment discrimination ❌
Equal remuneration for work of equal value ✅
Prohibition of sexual harassment ❌
Absence of restrictions on women's employment ❌
Basic labour protections for gig workers ✅

9. Child and Forced Labour

Prohibition on child labour (≤15 years) ✅
Age (employment entry ≥ compulsory schooling) ✅
Prohibition on hazardous work for under 18 ✅
Prohibition on forced labour ✅

10. Trade Union

Right to unionise ✅
Right to collective bargaining ❌
Right to strike ❌
Prohibition on replacing striking workers ❌

Score

50

❌
✅
❌
✅

60

✅
✅
❌
❌
✅

40

❌
✅
❌
❌
✅

100

✅
✅
✅
✅

25

✅
❌
❌
❌

◇ Non-Standard Employment has been defined as Part-Time Employment (A) and Temporary Employment (B)
§ Proportion of population living below the national poverty line (%), as measured under SDG 1.2.1
¶ Share of informal employment in non-agriculture (%), as measured under SDG 8.3.1