



Project no. *FP6-2004-506590*

Project acronym *WOLIWEB*

Project title *The socio-economic determinants of citizens' work life attitudes, preferences and perceptions, using data from the continuous web-based European Wage Indicator Survey*

Instrument: STREP

Thematic Priority PRIORITY 7, Research Area 3.2.2.

## **Weighting the dataset**

Deliverable: D22b Weigts for the dataset-year

Report Version: Final

Date of preparation: 31.03.2007

Authors of this report: Pablo de Pedraza, Universidad de Salamanca

**TABLE OF CONTENT**

<b>1.</b>	<b>The overall objective of WOLIWEB.....</b>	<b>2</b>
<b>2.</b>	<b>Introduction: Weigting the <i>WageIndicator</i> data .....</b>	<b>3</b>
<b>3.</b>	<b>Weighting the Spanish data set by gender, age and sector of activity ..</b>	<b>5</b>
<b>4.</b>	<b>Population proportions and variable Weight1.....</b>	<b>8</b>
4.1	SPSS SYNTAX TO GENERATE Age4, AISC and Weight1.....	11
4.2	DOES WEIGHTING REALLY MATTER?.....	12
<b>5.</b>	<b>Weighting the German data set by gender, age, sector of activity and educational level.....</b>	<b>13</b>
<b>6.</b>	<b>Weighting the Polish data set by gender, age, sector of activity and eduactional level.....</b>	<b>19</b>
<b>7.</b>	<b>Weighting the Belgium data set by gender, age, sector of activity and eduactional level.....</b>	<b>23</b>
<b>8.</b>	<b>Weighting the Danish data set by gender, age sector of activity and eduactional level.....</b>	<b>27</b>
<b>9.</b>	<b>Weighting the Finnish data set by gender, age sector of activity and eduactional level.....</b>	<b>32</b>
<b>10.</b>	<b>Weighting the United kingdom data set by gender, age sector of activity and eduactional level .....</b>	<b>37</b>
<b>11.</b>	<b>Weighting the Netherlands data set by gender, age sector of activity and eduactional level.....</b>	<b>43</b>

## 1. THE OVERALL OBJECTIVE OF WOLIWEB

WOLIWEB addresses the impact of the socio-economic framework on attitudes, preferences, and perceptions. Attitudes, preferences, and perceptions are inherently subjective in nature. They are potentially influenced by a host of factors related to one's socio-economic framework, referring to concepts such as occupation; labour market status; earnings; working, household and leisure time; marital status and family phase; socio-economic status; gender and ethnical background. WOLIWEB aims for quantitative analyses, and the data needed are gathered through the international, continuous web-based *WageIndicator*, consisting of

- an attractive website with labour market related information for a large public;
- a crowd-pulling Salary Check providing with very detailed salary information related to a set of variables such as education, firm size, supervisory position;
- a *WageIndicator* questionnaire with 67 – 85 questions; the dataset provides insight in issues related to work and wages;
- nation wide promotion, publicity, and answering visitors' email.

This paper is WOLIWEB's Deliverable D22b. It explains how the data of the *WageIndicator* web-survey is weighted. D22b is part of Work Package 5 'Synchronizing questionnaire and managing data collection' (p. 27 Annex 1).

## 2. INTRODUCTION: WEIGTING THE *WAGEINDICATOR* DATA

The problem of non-probability samples can be tackled by different and complementary methods. In the *WageIndicator* case, the short term solution is to weight on the basis of labour force data published by the national statistical offices. However, in the long term the final sample is to be representative of each country labour force by marketing the underrepresented groups. Therefore, there are plans to go beyond this to improve data quality and develop new methods to adjust for survey bias.

The *WageIndicator* is hugely successful in terms of the number of visits and visitors that it draws, and also of responses to its questionnaire. In several respects, the *WageIndicator* may pose as a striking example of the very survey instrument for the future as Internet penetration can only go up. Nevertheless, it is clear that important problems remain to be solved with regard to the representativeness of the sampling. It seems likely that access to and use of the Internet is biased, esp. by level of education and income within and between countries, though one may expect this problem to become progressively less, e.g. the Dutch survey is already accessed by gardeners and others in low-wage occupations and misrepresented groups decrease its misrepresentation over the years.

In the meanwhile, weighting the data may solve the problem. We use the word may because the next step, after weighting, should be to measure if it is really effective.

This paper is divided into two parts. The first one explains the weighting of the Spanish data in the *WageIndicator* dataset and establishes the basis for how to test for its usefulness. More information about the project, the dataset and the questionnaire can be found at [www.WageIndicator.org/](http://www.WageIndicator.org/), section Research Lab, where this document together with downloadable research papers, codebooks, classification data, master-questionnaire and other information related to the survey is posted.

The weighting has been tackled on the basis of labour force data published by the Spanish National Statistical office (Instituto Nacional de Estadística). The data have been compared for variables that were assumed to be subject to bias, notably gender, age and sector. These variables were chosen to be generalized to the rest of the *WageIndicator* member countries. There are country specific variables that should be included in country specific weights. For example, working hours (part-time or full-time) is important in the Netherlands but not in Spain, the kind of contract (temporary or permanent) is relevant in Spain but not in most of the

countries. Therefore, gender, age and sector are assumed to matter in every country.

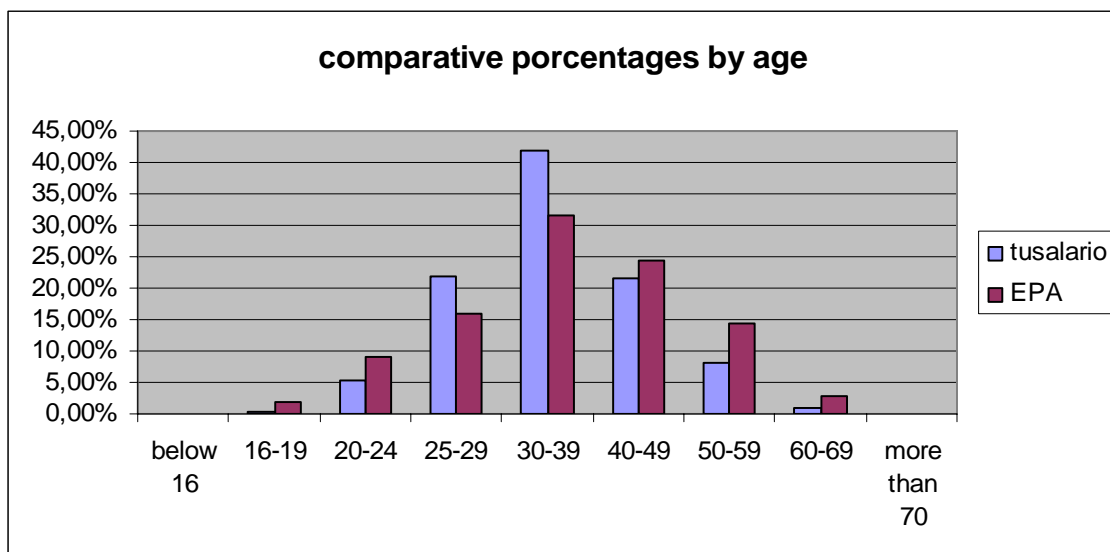
The second part of the paper deals with the weighting of German data set using LFS data from Eurostat. In this second part the weights has been elaborated following the same methodology but including the level of education. Following the same methodology we have calculated weights for Poland, Belgium, Denmark, Finland and the United Kingdom. For the Netherlands, weights were already available. At the end of the paper we offer the SPSS syntax to generate weights in the national samples. Due to the small sample size, no weights have been calculated for the Italian data.

### 3. WEIGHTING THE SPANISH DATA SET BY GENDER, AGE AND SECTOR OF ACTIVITY

In order to make statistic and econometric analysis reliable, it is needed to weight the data. On the one hand, the following method have been developed to weight, by a number above 1, groups of age, gender, sector of activity and educational level, whose representation in WOLIWEB sample is below they proportion in the population. On the other hand, to weight, by a number below 1, groups of age, gender, sector of activity and educational level, whose representation in WOLIWEB sample is above they proportion in the population. We intend to make our analysis of better quality until we manage to get a representative sample of the population by the development of new web sampling methods. We leave for future research to test whether the method have been successful (see the Spanish national report).

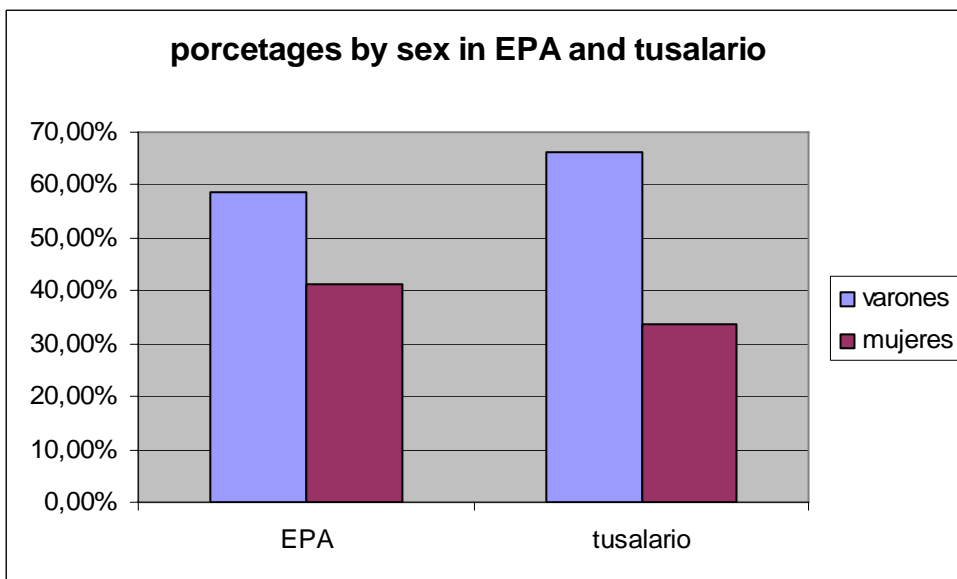
As for age, older workers are under-represented in the Spanish sample. This particularly applies to individuals aged 40-49 and over. In the Dutch sample the age mis-representation started at 55 and was reduced from 2001 to 2004. Therefore, marketing measures for older workers are to be different in both countries. Furthermore, in the absence of marketing measures, while the age-technology gap might be solved in the Netherlands within ten years, it will take more than 15 years in Spain. In addition, the Table shows that the share of youngest workers (16-19) is lower in tusalario.es (the Spanish *WageIndicator.org* web site) than in the Spanish labour force. Mid-age workers from 20 to 40 are overrepresented.

**Table1**

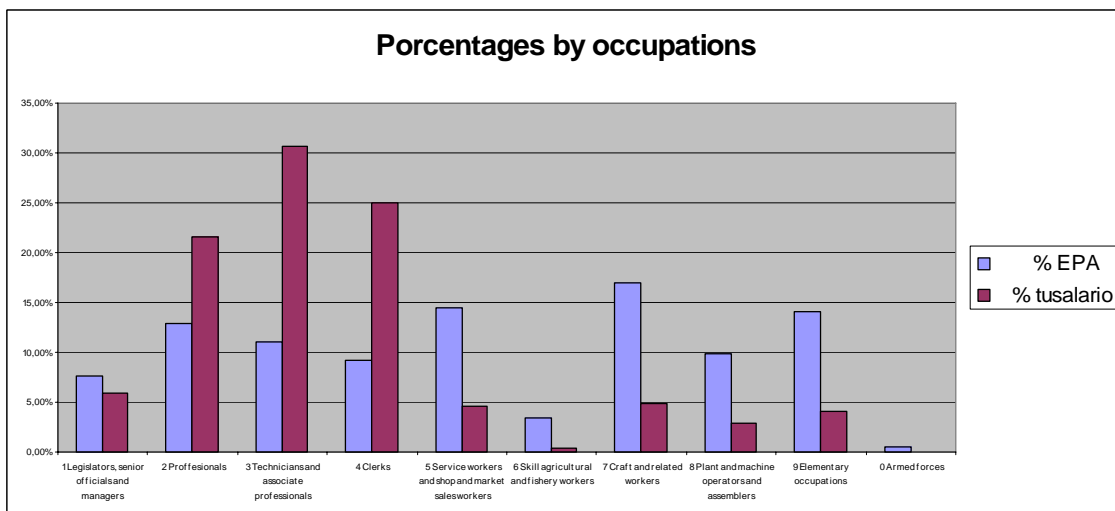


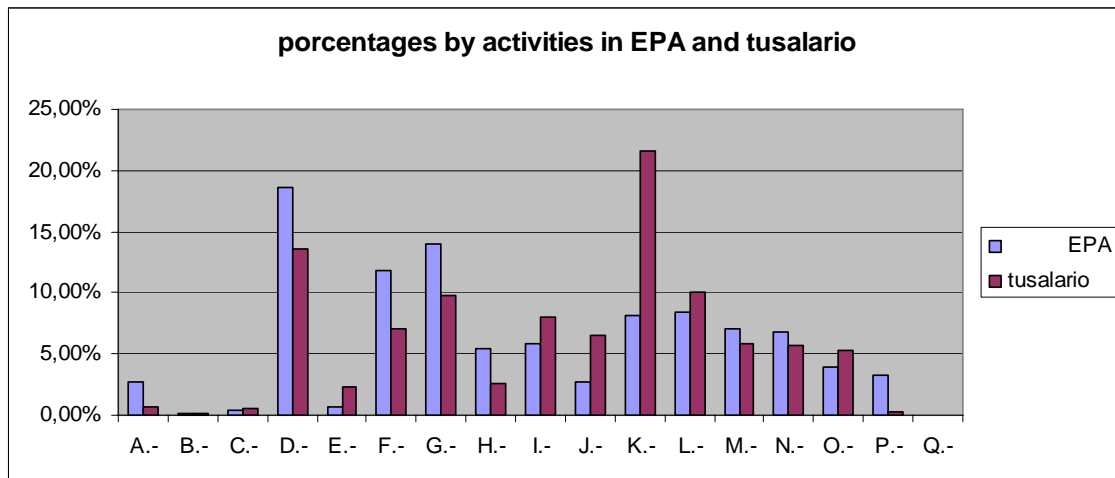
As for gender, the female labour force is under-represented. The reason might be that females are more concentrated in their job tasks than males, as most of the people answer the questionnaire during working hours. Another possible reason might be that by accident tusalarío had a link in a men-oriented porno web site during several months. On the contrary, male labour force is under-represented in the Dutch sample, which may be due to the fact that the survey initially addressed women only. From 2002 to 2004, however, the under-representation reduced. The Spanish accidental experience with males' overrepresentation might be a possible marketing example to solve the misrepresentation of men in The Netherlands.

**Table 2**



**Table 3**



**Table 4**

As for activities, the low skilled labour force and elementary occupations are under-represented in the sample. Regarding Nace classification, agriculture, hunting and forestry (A); manufacturing (D); construction (F); wholesale, retail trade, repair of vehicles and household goods (G); hotels and restaurants(H); education (M), health and social work (N), extra-territorial organizations and bodies(Q) are underrepresented. In contrast, electricity, gas and water supply (E); transport, storage and communication (I); financial intermediation (J); other community, social and personal service activities (O) are overrepresented.

Therefore, according to the above comparison between EPA and tusalarío age, gender and occupation are appropriate variables for weights.



#### 4. POPULATION PROPORTIONS AND VARIABLE WEIGHT1.

The first step followed to obtain the weights is to calculate the proportion of each group in the population. It was done using the Spanish Labour Force Survey (EPA), for which the data are downloadable in the INE web site. In those data the economic activities variable is classified in Agriculture, Construction, Industries and Services. The age variable is classified into four intervals: from 16 to 19, from 20 to 24, from 25 to 54 and more than 55. Although these classifications are too general, the same process can be follow for more detailed ones. The chart below shows the number of people in each category.

**Table 5: Number people in each group, EPA (thousands).**

GENDER	AGE	SECTOR	EPA (LFS)
Men	16-19	Agriculture	23,5
Men	16-19	Industry	67,8
Men	16-19	Construction	67,6
Men	16-19	Services	80
Men	20-24	Agriculture	51,6
Men	20-24	Industry	233,8
Men	20-24	Construction	211,5
Men	20-24	Services	386,5
Men	25-54	Agriculture	542,7
Men	25-54	Industry	1811,6
Men	25-54	Construction	1287,3
Men	25-54	Services	4024,6
Men	More than 55	Agriculture	162,7
Men	More than 55	Industry	276,4
Men	More than 55	Construction	152,3
Men	More than 55	Services	591,1
Women	16-19	Agriculture	7,5
Women	16-19	Industry	20,9
Women	16-19	Construction	2
Women	16-19	Services	88,4
Women	20-24	Agriculture	24,1
Women	20-24	Industry	113,3
Women	20-24	Construction	9,7
Women	20-24	Services	484,8
Women	25-54	Agriculture	211,2
Women	25-54	Industry	601,4
Women	25-54	Construction	70,1
Women	25-54	Services	3777,9
Women	More than 55	Agriculture	69,3
Women	More than 55	Industry	42,3
Women	More than 55	Construction	3,2
Women	More than 55	Services	369,3
			15866,4

The second step is to do the same with the *WageIndicator* sample, bearing in mind that those groups with very few cases have to be merged with another group. In the below chart those with the same colours were merged together.

**Table 6: Number of people in each group, tusalario (total number)**

Gender	AGE	SECTOR	tusalario	
Men	16-19	Agriculture	1	x
Men	16-19	Industry	3	x
Men	16-19	Construction	0	x
Men	16-19	Services	11	15
Men	20-24	Agriculture	1	x
Men	20-24	Industry	40	
Men	20-24	Construction	9	x
Men	20-24	Services	189	
Men	25-54	Agriculture	34	x
Men	25-54	Industry	727	
Men	25-54	Construction	123	x
Men	25-54	Services	3129	
Men	More than 55	Agriculture	1	36
Men	More than 55	Industry	33	
Men	More than 55	Construction	6	138
Men	More than 55	Services	123	
Women	16-19	Agriculture	0	x
Women	16-19	Industry	0	x
Women	16-19	Construction	2	x
Women	16-19	Services	9	11
Women	20-24	Agriculture	1	x
Women	20-24	Industry	20	
Women	20-24	Construction	3	x
Women	20-24	Services	143	
Women	25-54	Agriculture	10	x
Women	25-54	Industry	271	x
Women	25-54	Construction	20	x
Women	25-54	Services	2028	
Women	More than 55	Agriculture	0	11
Women	More than 55	Industry	4	275
Women	More than 55	Construction	0	23
Women	More than 55	Services	43	
			6984	

As can be observed, there are cases in which the underrepresentation is so severe that it is simply non representation. This is another reason why a more detailed division was not used. The new classification became:

**Table 7 New numbers of people in each group, tusalario (total number)**

GENDER	AGE	SECTOR	tusalario
Men	16 - 19	Every sector	15
Men	16 - 19	Industry	40
Men	16 - 19	Services	189
Men	25 - 54	Industry	727

Men	25 - 54	Services	3129
Men	More than 20	Agriculture	36
Men	More than 55	Industry	33
Men	More than 20	Construction	138
Men	More than 55	Services	123
Women	16 - 19	Every sector	11
Women	20 - 24	Industry	20
Women	20 - 24	Services	143
Women	25 - 54	Services	2028
Women	More than 20	Agriculture	11
Women	More than 20	Industry	275
Women	More than 20	Construction	23
Women	More than 55	Services	43
			6984

Then going back to the EPA the same groups have to be merged. Then it has to be calculated the proportion of each group in tusalarío and in EPA. Finally the new variable is obtained dividing the population proportion by the sample one:

$$weight = \frac{n_{population}}{n_{sample}}$$

			tusalarío number	tusalarío proportion	EPA number		EPA proportion
Men	16 to 19	All	15	0,002148	238,9	0,015057	7,010528
Men	20 to 24	I	40	0,005727	233,8	0,014736	2,572826
Men	20 to 24	S	189	0,027062	386,5	0,02436	0,900147
Men	25 to 54	I	727	0,104095	1811,6	0,114178	1,096866
Men	25 a 54	S	3129	0,448024	4024,6	0,253656	0,566165
Men	> 20	A	36	0,005155	757	0,047711	9,255912
Men	> 55	I	33	0,004725	276,4	0,01742	3,686803
Men	>20	C	138	0,019759	1651,1	0,104063	5,266476
Men	>50	S	123	0,017612	591,1	0,037255	2,115347
Women	16 to 19	All	11	0,001575	118,8	0,007488	4,753895
Women	20 to 24	I	20	0,002864	113,3	0,007141	2,493594
Women	20 to 24	S	143	0,020475	484,8	0,030555	1,492287
Women	25 to 54	S	2028	0,290378	3777,9	0,238107	0,81999
Women	>20	A	11	0,001575	304,6	0,019198	12,18886
Women	>25	I	275	0,039376	643,7	0,04057	1,030331
Women	> 20	C	23	0,003293	83	0,005231	1,588459
Women	>55	S	43	0,006157	369,3	0,023276	3,780391
Total			6984	1	15866,4	1	

#### 4.1 SPSS SYNTAX TO GENERATE AGE4, AISC AND WEIGHT1.

In the *WageIndicator* sample the variables used for weighting do not exits, apart from gender. Find below the syntax used to generate Age4 (age into the four categories) and AISC (Nace classification into agriculture, industry, services and construction).

```
compute age4 = age.
var lab age4 'age recoded into 4 groups'.
val lab age4 1 '16 to 19' 2 '20 to 24' 3 '25 to 54' 4 '55 and more'.
recode age4 (16 thru 19 = 1) (20 thru 24 = 2) (25 thru 54 = 3) (55 thru 75 = 4)
(else =sysmis).
execute.
fre age4.
compute AICS = NACELNUM.
var lab AICS 'NACELNUM recoded into 4 groups'.
val lab AICS 1 'Agriculture' 2 'Industry' 3 'Construction' 4 'Services'.
recode AICS (1 thru 2 = 1) (3 thru 4 = 2) (5 = 3) (7 thru 17 = 4) (else =sysmis).
execute.
fre AICS.
```

\*\*Then the new variable (weight1) can be generated using the following syntax.

```
compute WEIGHT1=SYSMIS.
for WEIGHT1 (f2.5).
VAR LAB WEIGHT1 'weights by sex, age4 and AICS'.
if (sex=2 and age4 = 1 and AICS = 1 ) WEIGHT1 = 7.010528.
if (sex=2 and age4 = 1 and AICS = 2 ) WEIGHT1 = 7.010528.
if (sex=2 and age4 = 1 and AICS = 3 ) WEIGHT1 = 7.010528.
if (sex=2 and age4 = 1 and AICS = 4 ) WEIGHT1 = 7.010528.
if (sex=2 and age4 = 2 and AICS = 2 ) WEIGHT1 = 2.572826.
if (sex=2 and age4 = 2 and AICS = 4 ) WEIGHT1 = 0.900147.
if (sex=2 and age4 = 3 and AICS = 2 ) WEIGHT1 = 1.096866.
if (sex=2 and age4 = 3 and AICS = 4 ) WEIGHT1 = 0.566165.
if (sex=2 and age4 = 2 and AICS = 1 ) WEIGHT1 = 9.255912.
if (sex=2 and age4 = 3 and AICS = 1 ) WEIGHT1 = 9.255912.
if (sex=2 and age4 = 4 and AICS = 1 ) WEIGHT1 = 9.255912.
if (sex=2 and age4 = 4 and AICS = 2 ) WEIGHT1 = 3.686803.
if (sex=2 and age4 = 2 and AICS = 3 ) WEIGHT1 = 5.266476.
if (sex=2 and age4 = 3 and AICS = 3 ) WEIGHT1 = 5.266476.
if (sex=2 and age4 = 4 and AICS = 3 ) WEIGHT1 = 5.266476.
if (sex=2 and age4 = 4 and AICS = 4 ) WEIGHT1 = 2.115376.
if (sex=1 and age4 = 1 and AICS = 1 ) WEIGHT1 = 4.753895.
if (sex=1 and age4 = 1 and AICS = 2 ) WEIGHT1 = 4.753895.
if (sex=1 and age4 = 1 and AICS = 3 ) WEIGHT1 = 4.753895.
if (sex=1 and age4 = 1 and AICS = 4 ) WEIGHT1 = 4.753895.
if (sex=1 and age4 = 2 and AICS = 2 ) WEIGHT1 = 2.493594.
if (sex=1 and age4 = 2 and AICS = 4 ) WEIGHT1 = 1.492287.
if (sex=1 and age4 = 3 and AICS = 4 ) WEIGHT1 = 0.81999.
if (sex=1 and age4 = 2 and AICS = 1 ) WEIGHT1 = 12.18886.
if (sex=1 and age4 = 3 and AICS = 1 ) WEIGHT1 = 12.18886.
if (sex=1 and age4 = 4 and AICS = 1 ) WEIGHT1 = 12.18886.
if (sex=1 and age4 = 3 and AICS = 2 ) WEIGHT1 = 1.030331.
if (sex=1 and age4 = 4 and AICS = 2 ) WEIGHT1 = 1.030331.
```

```
if (sex=1 and age4 = 2 and AICS = 3 ) WEIGHT1 = 1.588459.  
if (sex=1 and age4 = 3 and AICS = 3 ) WEIGHT1 = 1.588459.  
if (sex=1 and age4 = 4 and AICS = 3 ) WEIGHT1 = 1.588459.  
if (sex=1 and age4 = 4 and AICS = 4 ) WEIGHT1 = 3.780391.  
des WEIGHT1.  
fre WEIGHT1.
```

## 4.2 DOES WEIGHTING REALLY MATTER?

Mean salaries have to be estimated for each country before and after weighting. These estimated mean salaries have to be compared to mean salaries in national surveys. If estimations with wage indicator data after weighting are significantly closer to those of the population, then weights solving the problem.

## 5. WEIGHTING THE GERMAN DATA SET BY GENDER, AGE, SECTOR OF ACTIVITY AND EDUCATIONAL LEVEL

The same methodology was followed to obtain the German weights. However, as German sample was much bigger another variable was introduced, namely level of education. It was intro recoding Isced education categories into low, medium and high following the Eurostat recodification into three categories.

At the same time, instead of introducing age recoded into four intervals, it was introduced recoded into the following thirteen 13 intervals: 15-19, 20-24, 25-29, 30-34, 35-39, 40-44, 45-49, 50-54, 55-59, 60-64, 65-69, 70-74 and more than 75.

Economic activities were introduced like in section 2, divided into agriculture, industry, construction and services. The fourth variable to be considered was gender.

This methodology was extended to the rest of the WOLIWEB countries. Spanish team calculated weights and sent the following syntax to the national teams. For those countries with small samples more groups will be merged together (see table 6).

```
***Generate age into 13 intervals.
compute age13 = age.
var lab age13 'age recoded into 13 groups'.
val lab age13 1 '15 to 19' 2 '20 to 24' 3 '25 to 29' 4 '30 to 34' 5 '35 to 39' 6 '40 to
44' 7 '45 to 49' 8 '50 to 54' 9 '55 to 59' 10 '60 to 64' 11 '65 to 69' 12 '70 to 74' 13
'75 and over'.
recode age13 (15 thru 19 = 1) (20 thru 24 = 2) (25 thru 29 = 3) (30 thru 34 = 4)
(35 thru 39 = 5) (40 thru 44 = 6) (45 thru 49 = 7) (50 thru 54 = 8) (55 thru 59 =
9) (60 thru 64 = 10) (65 thru 69 = 11) (70 thru 74 = 12) (75 thru 99 = 13) (else
=sysmis).
execute.
fre age13.
***Generate nace letter codes into Agriculture, industry, construction and services
compute AICS = NACE1NUM.
var lab AICS 'NACE1NUM recoded into 4 groups'.
val lab AICS 1 'Agriculture' 2 'Industry' 3 'Construction' 4 'Services'.
recode AICS (1 thru 2 = 1) (3 thru 5 = 2) (6 = 3) (7 thru 17 = 4) (else =sysmis).
execute.
fre AICS.
***Generate variable weight1
compute WEIGHT1=SYSMIS.
for WEIGHT1 (f2.5)
VAR LAB WEIGHT1 'weights by sex, age13, isced3 and AICS'.
if (sex = 1 and age13 = 1 and isced3=1 and AICS = 1 ) WEIGHT1 = 4.63408699.
if (sex = 1 and age13 = 1 and isced3=1 and AICS = 2 ) WEIGHT1 = 4.63408699.
if (sex = 1 and age13 = 1 and isced3=1 and AICS = 3 ) WEIGHT1 = 4.63408699.
if (sex = 1 and age13 = 1 and isced3=1 and AICS = 4 ) WEIGHT1 = 4.63408699.
if (sex = 1 and age13 = 1 and isced3=2 and AICS = 2 ) WEIGHT1 = 2.90490675.
```

if (sex = 1 and age13 = 1 and isced3=2 and AICS = 3 ) WEIGHT1 = 2.90490675.  
if (sex = 1 and age13 = 1 and isced3=2 and AICS = 4 ) WEIGHT1 = 2.90490675.  
if (sex = 1 and age13 = 1 and isced3=3 and AICS = 4 ) WEIGHT1 = 2.90490675.  
if (sex = 1 and age13 = 2 and isced3=1 and AICS = 1 ) WEIGHT1 = 0.41590881.  
if (sex = 1 and age13 = 2 and isced3=1 and AICS = 2 ) WEIGHT1 = 0.26016684.  
if (sex = 1 and age13 = 2 and isced3=1 and AICS = 3 ) WEIGHT1 = 0.15723062.  
if (sex = 1 and age13 = 2 and isced3=1 and AICS = 4 ) WEIGHT1 = 0.5179989.  
if (sex = 1 and age13 = 2 and isced3=2 and AICS = 1 ) WEIGHT1 = 5.40747929.  
if (sex = 1 and age13 = 2 and isced3=2 and AICS = 2 ) WEIGHT1 = 0.87551076.  
if (sex = 1 and age13 = 2 and isced3=2 and AICS = 3 ) WEIGHT1 = 0.45709112.  
if (sex = 1 and age13 = 2 and isced3=2 and AICS = 4 ) WEIGHT1 = 2.17186958.  
if (sex = 1 and age13 = 2 and isced3=3 and AICS = 2 ) WEIGHT1 = 0.35366249.  
if (sex = 1 and age13 = 2 and isced3=3 and AICS = 3 ) WEIGHT1 = 0.35366249.  
if (sex = 1 and age13 = 2 and isced3=3 and AICS = 4 ) WEIGHT1 = 1.96568672.  
if (sex = 1 and age13 = 3 and isced3=1 and AICS = 1 ) WEIGHT1 = 0.20652836.  
if (sex = 1 and age13 = 3 and isced3=1 and AICS = 2 ) WEIGHT1 = 0.14564698.  
if (sex = 1 and age13 = 3 and isced3=1 and AICS = 3 ) WEIGHT1 = 0.05695093.  
if (sex = 1 and age13 = 3 and isced3=1 and AICS = 4 ) WEIGHT1 = 0.19890019.  
if (sex = 1 and age13 = 3 and isced3=2 and AICS = 1 ) WEIGHT1 = 5.40747929.  
if (sex = 1 and age13 = 3 and isced3=2 and AICS = 2 ) WEIGHT1 = 0.46497786.  
if (sex = 1 and age13 = 3 and isced3=2 and AICS = 3 ) WEIGHT1 = 0.45709112.  
if (sex = 1 and age13 = 3 and isced3=2 and AICS = 4 ) WEIGHT1 = 1.12463824.  
if (sex = 1 and age13 = 3 and isced3=3 and AICS = 1 ) WEIGHT1 = 5.40747929.  
if (sex = 1 and age13 = 3 and isced3=3 and AICS = 2 ) WEIGHT1 = 0.2381842.  
if (sex = 1 and age13 = 3 and isced3=3 and AICS = 3 ) WEIGHT1 = 0.08421909.  
if (sex = 1 and age13 = 3 and isced3=3 and AICS = 4 ) WEIGHT1 = 0.63925394.  
if (sex = 1 and age13 = 4 and isced3=1 and AICS = 1 ) WEIGHT1 = 0.31039006.  
if (sex = 1 and age13 = 4 and isced3=1 and AICS = 2 ) WEIGHT1 = 0.19619419.  
if (sex = 1 and age13 = 4 and isced3=1 and AICS = 3 ) WEIGHT1 = 0.06610039.  
if (sex = 1 and age13 = 4 and isced3=1 and AICS = 4 ) WEIGHT1 = 0.31371387.  
if (sex = 1 and age13 = 4 and isced3=2 and AICS = 1 ) WEIGHT1 = 5.40747929.  
if (sex = 1 and age13 = 4 and isced3=2 and AICS = 2 ) WEIGHT1 = 0.79858719.  
if (sex = 1 and age13 = 4 and isced3=2 and AICS = 3 ) WEIGHT1 = 0.82712994.  
if (sex = 1 and age13 = 4 and isced3=2 and AICS = 4 ) WEIGHT1 = 1.62328044.  
if (sex = 1 and age13 = 4 and isced3=3 and AICS = 1 ) WEIGHT1 = 5.40747929.  
if (sex = 1 and age13 = 4 and isced3=3 and AICS = 2 ) WEIGHT1 = 0.22588892.  
if (sex = 1 and age13 = 4 and isced3=3 and AICS = 3 ) WEIGHT1 = 0.17556659.  
if (sex = 1 and age13 = 4 and isced3=3 and AICS = 4 ) WEIGHT1 = 0.71142416.  
if (sex = 1 and age13 = 5 and isced3=1 and AICS = 1 ) WEIGHT1 = 0.57585793.  
if (sex = 1 and age13 = 5 and isced3=1 and AICS = 2 ) WEIGHT1 = 0.27462411.  
if (sex = 1 and age13 = 5 and isced3=1 and AICS = 3 ) WEIGHT1 = 0.09568164.  
if (sex = 1 and age13 = 5 and isced3=1 and AICS = 4 ) WEIGHT1 = 0.39589277.  
if (sex = 1 and age13 = 5 and isced3=2 and AICS = 1 ) WEIGHT1 = 5.40747929.  
if (sex = 1 and age13 = 5 and isced3=2 and AICS = 2 ) WEIGHT1 = 1.29813616.  
if (sex = 1 and age13 = 5 and isced3=2 and AICS = 3 ) WEIGHT1 = 1.4347291.  
if (sex = 1 and age13 = 5 and isced3=2 and AICS = 4 ) WEIGHT1 = 2.60510593.  
if (sex = 1 and age13 = 5 and isced3=3 and AICS = 1 ) WEIGHT1 = 5.40747929.  
if (sex = 1 and age13 = 5 and isced3=3 and AICS = 2 ) WEIGHT1 = 0.4524366.  
if (sex = 1 and age13 = 5 and isced3=3 and AICS = 3 ) WEIGHT1 = 0.45848279.  
if (sex = 1 and age13 = 5 and isced3=3 and AICS = 4 ) WEIGHT1 = 1.25311542.  
if (sex = 1 and age13 = 6 and isced3=1 and AICS = 1 ) WEIGHT1 = 0.57027023.  
if (sex = 1 and age13 = 6 and isced3=1 and AICS = 2 ) WEIGHT1 = 0.34533004.  
if (sex = 1 and age13 = 6 and isced3=1 and AICS = 3 ) WEIGHT1 = 0.12645604.  
if (sex = 1 and age13 = 6 and isced3=1 and AICS = 4 ) WEIGHT1 = 0.43611479.  
if (sex = 1 and age13 = 6 and isced3=2 and AICS = 1 ) WEIGHT1 = 5.40747929.  
if (sex = 1 and age13 = 6 and isced3=2 and AICS = 2 ) WEIGHT1 = 1.58378019.

if (sex = 1 and age13 = 6 and isced3=2 and AICS = 3 ) WEIGHT1 = 1.87959206.  
if (sex = 1 and age13 = 6 and isced3=2 and AICS = 4 ) WEIGHT1 = 3.11388599.  
if (sex = 1 and age13 = 6 and isced3=3 and AICS = 1 ) WEIGHT1 = 5.40747929.  
if (sex = 1 and age13 = 6 and isced3=3 and AICS = 2 ) WEIGHT1 = 0.56254817.  
if (sex = 1 and age13 = 6 and isced3=3 and AICS = 3 ) WEIGHT1 = 0.70265812.  
if (sex = 1 and age13 = 6 and isced3=3 and AICS = 4 ) WEIGHT1 = 2.2528454.  
if (sex = 1 and age13 = 7 and isced3=1 and AICS = 1 ) WEIGHT1 = 6.62514987.  
if (sex = 1 and age13 = 7 and isced3=1 and AICS = 2 ) WEIGHT1 = 0.46629045.  
if (sex = 1 and age13 = 7 and isced3=1 and AICS = 3 ) WEIGHT1 = 0.13927977.  
if (sex = 1 and age13 = 7 and isced3=1 and AICS = 4 ) WEIGHT1 = 0.61452131.  
if (sex = 1 and age13 = 7 and isced3=2 and AICS = 1 ) WEIGHT1 = 7.1003006.  
if (sex = 1 and age13 = 7 and isced3=2 and AICS = 2 ) WEIGHT1 = 3.72011362.  
if (sex = 1 and age13 = 7 and isced3=2 and AICS = 3 ) WEIGHT1 = 3.12873595.  
if (sex = 1 and age13 = 7 and isced3=2 and AICS = 4 ) WEIGHT1 = 4.24055568.  
if (sex = 1 and age13 = 7 and isced3=3 and AICS = 1 ) WEIGHT1 = 7.1003006.  
if (sex = 1 and age13 = 7 and isced3=3 and AICS = 2 ) WEIGHT1 = 0.66001835.  
if (sex = 1 and age13 = 7 and isced3=3 and AICS = 3 ) WEIGHT1 = 1.35439773.  
if (sex = 1 and age13 = 7 and isced3=3 and AICS = 4 ) WEIGHT1 = 2.67739285.  
if (sex = 1 and age13 = 8 and isced3=1 and AICS = 1 ) WEIGHT1 = 6.62514987.  
if (sex = 1 and age13 = 8 and isced3=1 and AICS = 2 ) WEIGHT1 = 0.71353367.  
if (sex = 1 and age13 = 8 and isced3=1 and AICS = 3 ) WEIGHT1 = 0.34338841.  
if (sex = 1 and age13 = 8 and isced3=1 and AICS = 4 ) WEIGHT1 = 0.98655487.  
if (sex = 1 and age13 = 8 and isced3=2 and AICS = 1 ) WEIGHT1 = 7.1003006.  
if (sex = 1 and age13 = 8 and isced3=2 and AICS = 2 ) WEIGHT1 = 3.72011362.  
if (sex = 1 and age13 = 8 and isced3=2 and AICS = 3 ) WEIGHT1 = 3.12873595.  
if (sex = 1 and age13 = 8 and isced3=2 and AICS = 4 ) WEIGHT1 = 9.21944229.  
if (sex = 1 and age13 = 8 and isced3=3 and AICS = 2 ) WEIGHT1 = 1.31794219.  
if (sex = 1 and age13 = 8 and isced3=3 and AICS = 3 ) WEIGHT1 = 1.3005476.  
if (sex = 1 and age13 = 8 and isced3=3 and AICS = 4 ) WEIGHT1 = 5.14129425.  
if (sex = 1 and age13 = 9 and isced3=1 and AICS = 1 ) WEIGHT1 = 6.62514987.  
if (sex = 1 and age13 = 9 and isced3=1 and AICS = 2 ) WEIGHT1 = 1.75212065.  
if (sex = 1 and age13 = 9 and isced3=1 and AICS = 3 ) WEIGHT1 = 0.40274167.  
if (sex = 1 and age13 = 9 and isced3=1 and AICS = 4 ) WEIGHT1 = 1.4643771.  
if (sex = 1 and age13 = 9 and isced3=2 and AICS = 2 ) WEIGHT1 = 3.72011362.  
if (sex = 1 and age13 = 9 and isced3=2 and AICS = 4 ) WEIGHT1 = 9.21944229.  
if (sex = 1 and age13 = 9 and isced3=3 and AICS = 1 ) WEIGHT1 = 7.58613148.  
if (sex = 1 and age13 = 9 and isced3=3 and AICS = 2 ) WEIGHT1 = 1.86023351.  
if (sex = 1 and age13 = 9 and isced3=3 and AICS = 3 ) WEIGHT1 = 1.3005476.  
if (sex = 1 and age13 = 9 and isced3=3 and AICS = 4 ) WEIGHT1 = 5.14129425.  
if (sex = 1 and age13 = 10 and isced3=1 and AICS = 1 ) WEIGHT1 = 6.62514987.  
if (sex = 1 and age13 = 10 and isced3=1 and AICS = 2 ) WEIGHT1 = 4.01531376.  
if (sex = 1 and age13 = 10 and isced3=1 and AICS = 4 ) WEIGHT1 = 6.37161256.  
if (sex = 1 and age13 = 10 and isced3=2 and AICS = 2 ) WEIGHT1 = 3.72011362.  
if (sex = 1 and age13 = 10 and isced3=2 and AICS = 4 ) WEIGHT1 = 9.21944229.  
if (sex = 1 and age13 = 10 and isced3=3 and AICS = 2 ) WEIGHT1 = 1.86023351.  
if (sex = 1 and age13 = 10 and isced3=3 and AICS = 4 ) WEIGHT1 = 5.14129425.  
if (sex = 1 and age13 = 11 and isced3=1 and AICS = 1 ) WEIGHT1 = 6.62514987.  
if (sex = 1 and age13 = 11 and isced3=1 and AICS = 2 ) WEIGHT1 = 8.07717947.  
if (sex = 1 and age13 = 11 and isced3=1 and AICS = 3 ) WEIGHT1 = 8.07717947.  
if (sex = 1 and age13 = 11 and isced3=1 and AICS = 4 ) WEIGHT1 = 6.37161256.  
if (sex = 1 and age13 = 11 and isced3=2 and AICS = 4 ) WEIGHT1 = 9.21944229.  
if (sex = 1 and age13 = 11 and isced3=3 and AICS = 2 ) WEIGHT1 = 1.86023351.  
if (sex = 1 and age13 = 12 and isced3=1 and AICS = 1 ) WEIGHT1 = 6.62514987.  
if (sex = 1 and age13 = 12 and isced3=1 and AICS = 2 ) WEIGHT1 = 8.07717947.  
if (sex = 1 and age13 = 12 and isced3=1 and AICS = 4 ) WEIGHT1 = 8.07717947.  
if (sex = 1 and age13 = 13 and isced3=1 and AICS = 1 ) WEIGHT1 = 6.62514987.



if (sex = 1 and age13 = 13 and isced3=1 and AICS = 3 ) WEIGHT1 = 8.07717947.  
if (sex = 1 and age13 = 13 and isced3=1 and AICS = 4 ) WEIGHT1 = 8.07717947.  
if (sex = 1 and age13 = 13 and isced3=2 and AICS = 4 ) WEIGHT1 = 9.21944229.  
if (sex = 2 and age13 = 1 and isced3=1 and AICS = 1 ) WEIGHT1 = 2.53322641.  
if (sex = 2 and age13 = 1 and isced3=1 and AICS = 2 ) WEIGHT1 = 7.52873531.  
if (sex = 2 and age13 = 1 and isced3=1 and AICS = 3 ) WEIGHT1 = 2.53322641.  
if (sex = 2 and age13 = 1 and isced3=1 and AICS = 4 ) WEIGHT1 = 5.42461939.  
if (sex = 2 and age13 = 1 and isced3=2 and AICS = 1 ) WEIGHT1 = 2.53322641.  
if (sex = 2 and age13 = 1 and isced3=2 and AICS = 2 ) WEIGHT1 = 3.85552104.  
if (sex = 2 and age13 = 1 and isced3=2 and AICS = 4 ) WEIGHT1 = 2.58853304.  
if (sex = 2 and age13 = 1 and isced3=3 and AICS = 2 ) WEIGHT1 = 0.17905509.  
if (sex = 2 and age13 = 1 and isced3=3 and AICS = 4 ) WEIGHT1 = 0.17905509.  
if (sex = 2 and age13 = 2 and isced3=1 and AICS = 1 ) WEIGHT1 = 2.53322641.  
if (sex = 2 and age13 = 2 and isced3=1 and AICS = 2 ) WEIGHT1 = 0.41410769.  
if (sex = 2 and age13 = 2 and isced3=1 and AICS = 3 ) WEIGHT1 = 2.53322641.  
if (sex = 2 and age13 = 2 and isced3=1 and AICS = 4 ) WEIGHT1 = 0.67772902.  
if (sex = 2 and age13 = 2 and isced3=2 and AICS = 1 ) WEIGHT1 = 2.53322641.  
if (sex = 2 and age13 = 2 and isced3=2 and AICS = 2 ) WEIGHT1 = 1.94026589.  
if (sex = 2 and age13 = 2 and isced3=2 and AICS = 3 ) WEIGHT1 = 5.80526388.  
if (sex = 2 and age13 = 2 and isced3=2 and AICS = 4 ) WEIGHT1 = 1.93832528.  
if (sex = 2 and age13 = 2 and isced3=3 and AICS = 1 ) WEIGHT1 = 2.03533183.  
if (sex = 2 and age13 = 2 and isced3=3 and AICS = 2 ) WEIGHT1 = 0.37629096.  
if (sex = 2 and age13 = 2 and isced3=3 and AICS = 3 ) WEIGHT1 = 2.03533183.  
if (sex = 2 and age13 = 2 and isced3=3 and AICS = 4 ) WEIGHT1 = 0.84844949.  
if (sex = 2 and age13 = 3 and isced3=1 and AICS = 1 ) WEIGHT1 = 0.88027785.  
if (sex = 2 and age13 = 3 and isced3=1 and AICS = 2 ) WEIGHT1 = 0.16253983.  
if (sex = 2 and age13 = 3 and isced3=1 and AICS = 3 ) WEIGHT1 = 0.18247269.  
if (sex = 2 and age13 = 3 and isced3=1 and AICS = 4 ) WEIGHT1 = 0.24438437.  
if (sex = 2 and age13 = 3 and isced3=2 and AICS = 1 ) WEIGHT1 = 3.5623709.  
if (sex = 2 and age13 = 3 and isced3=2 and AICS = 2 ) WEIGHT1 = 0.81725468.  
if (sex = 2 and age13 = 3 and isced3=2 and AICS = 3 ) WEIGHT1 = 3.32983378.  
if (sex = 2 and age13 = 3 and isced3=2 and AICS = 4 ) WEIGHT1 = 0.93771304.  
if (sex = 2 and age13 = 3 and isced3=3 and AICS = 1 ) WEIGHT1 = 0.99210024.  
if (sex = 2 and age13 = 3 and isced3=3 and AICS = 2 ) WEIGHT1 = 0.23447018.  
if (sex = 2 and age13 = 3 and isced3=3 and AICS = 3 ) WEIGHT1 = 0.27662476.  
if (sex = 2 and age13 = 3 and isced3=3 and AICS = 4 ) WEIGHT1 = 0.36623475.  
if (sex = 2 and age13 = 4 and isced3=1 and AICS = 1 ) WEIGHT1 = 0.73100759.  
if (sex = 2 and age13 = 4 and isced3=1 and AICS = 2 ) WEIGHT1 = 0.16173135.  
if (sex = 2 and age13 = 4 and isced3=1 and AICS = 3 ) WEIGHT1 = 0.21826895.  
if (sex = 2 and age13 = 4 and isced3=1 and AICS = 4 ) WEIGHT1 = 0.2311319.  
if (sex = 2 and age13 = 4 and isced3=2 and AICS = 1 ) WEIGHT1 = 5.58380361.  
if (sex = 2 and age13 = 4 and isced3=2 and AICS = 2 ) WEIGHT1 = 0.88680298.  
if (sex = 2 and age13 = 4 and isced3=2 and AICS = 3 ) WEIGHT1 = 2.29805093.  
if (sex = 2 and age13 = 4 and isced3=2 and AICS = 4 ) WEIGHT1 = 0.9083263.  
if (sex = 2 and age13 = 4 and isced3=3 and AICS = 1 ) WEIGHT1 = 1.43554829.  
if (sex = 2 and age13 = 4 and isced3=3 and AICS = 2 ) WEIGHT1 = 0.27879667.  
if (sex = 2 and age13 = 4 and isced3=3 and AICS = 3 ) WEIGHT1 = 0.30519755.  
if (sex = 2 and age13 = 4 and isced3=3 and AICS = 4 ) WEIGHT1 = 0.34288107.  
if (sex = 2 and age13 = 5 and isced3=1 and AICS = 1 ) WEIGHT1 = 0.60116518.  
if (sex = 2 and age13 = 5 and isced3=1 and AICS = 2 ) WEIGHT1 = 0.15656909.  
if (sex = 2 and age13 = 5 and isced3=1 and AICS = 3 ) WEIGHT1 = 0.20365126.  
if (sex = 2 and age13 = 5 and isced3=1 and AICS = 4 ) WEIGHT1 = 0.21355794.  
if (sex = 2 and age13 = 5 and isced3=2 and AICS = 1 ) WEIGHT1 = 6.82397036.  
if (sex = 2 and age13 = 5 and isced3=2 and AICS = 2 ) WEIGHT1 = 1.19618729.  
if (sex = 2 and age13 = 5 and isced3=2 and AICS = 3 ) WEIGHT1 = 2.87630428.  
if (sex = 2 and age13 = 5 and isced3=2 and AICS = 4 ) WEIGHT1 = 1.10625276.

if (sex = 2 and age13 = 5 and isced3=3 and AICS = 1 ) WEIGHT1 = 3.70388792.  
if (sex = 2 and age13 = 5 and isced3=3 and AICS = 2 ) WEIGHT1 = 0.39455858.  
if (sex = 2 and age13 = 5 and isced3=3 and AICS = 3 ) WEIGHT1 = 0.70820952.  
if (sex = 2 and age13 = 5 and isced3=3 and AICS = 4 ) WEIGHT1 = 0.51553508.  
if (sex = 2 and age13 = 6 and isced3=1 and AICS = 1 ) WEIGHT1 = 0.76103796.  
if (sex = 2 and age13 = 6 and isced3=1 and AICS = 2 ) WEIGHT1 = 0.18605881.  
if (sex = 2 and age13 = 6 and isced3=1 and AICS = 3 ) WEIGHT1 = 0.21343497.  
if (sex = 2 and age13 = 6 and isced3=1 and AICS = 4 ) WEIGHT1 = 0.24282483.  
if (sex = 2 and age13 = 6 and isced3=2 and AICS = 1 ) WEIGHT1 = 8.77462914.  
if (sex = 2 and age13 = 6 and isced3=2 and AICS = 2 ) WEIGHT1 = 1.59667092.  
if (sex = 2 and age13 = 6 and isced3=2 and AICS = 3 ) WEIGHT1 = 3.55636427.  
if (sex = 2 and age13 = 6 and isced3=2 and AICS = 4 ) WEIGHT1 = 1.53847995.  
if (sex = 2 and age13 = 6 and isced3=3 and AICS = 1 ) WEIGHT1 = 4.13539861.  
if (sex = 2 and age13 = 6 and isced3=3 and AICS = 2 ) WEIGHT1 = 0.65775835.  
if (sex = 2 and age13 = 6 and isced3=3 and AICS = 3 ) WEIGHT1 = 1.25200888.  
if (sex = 2 and age13 = 6 and isced3=3 and AICS = 4 ) WEIGHT1 = 0.83962747.  
if (sex = 2 and age13 = 7 and isced3=1 and AICS = 1 ) WEIGHT1 = 1.74683906.  
if (sex = 2 and age13 = 7 and isced3=1 and AICS = 2 ) WEIGHT1 = 0.18731612.  
if (sex = 2 and age13 = 7 and isced3=1 and AICS = 3 ) WEIGHT1 = 0.27638158.  
if (sex = 2 and age13 = 7 and isced3=1 and AICS = 4 ) WEIGHT1 = 0.21841753.  
if (sex = 2 and age13 = 7 and isced3=2 and AICS = 1 ) WEIGHT1 = 8.77462914.  
if (sex = 2 and age13 = 7 and isced3=2 and AICS = 2 ) WEIGHT1 = 2.07032346.  
if (sex = 2 and age13 = 7 and isced3=2 and AICS = 3 ) WEIGHT1 = 4.70101338.  
if (sex = 2 and age13 = 7 and isced3=2 and AICS = 4 ) WEIGHT1 = 2.03222525.  
if (sex = 2 and age13 = 7 and isced3=3 and AICS = 1 ) WEIGHT1 = 6.10400533.  
if (sex = 2 and age13 = 7 and isced3=3 and AICS = 2 ) WEIGHT1 = 0.86303473.  
if (sex = 2 and age13 = 7 and isced3=3 and AICS = 3 ) WEIGHT1 = 2.00227114.  
if (sex = 2 and age13 = 7 and isced3=3 and AICS = 4 ) WEIGHT1 = 1.26595384.  
if (sex = 2 and age13 = 8 and isced3=1 and AICS = 1 ) WEIGHT1 = 8.77462914.  
if (sex = 2 and age13 = 8 and isced3=1 and AICS = 2 ) WEIGHT1 = 0.21680709.  
if (sex = 2 and age13 = 8 and isced3=1 and AICS = 3 ) WEIGHT1 = 0.25001343.  
if (sex = 2 and age13 = 8 and isced3=1 and AICS = 4 ) WEIGHT1 = 0.27579179.  
if (sex = 2 and age13 = 8 and isced3=2 and AICS = 1 ) WEIGHT1 = 8.77462914.  
if (sex = 2 and age13 = 8 and isced3=2 and AICS = 2 ) WEIGHT1 = 2.98480742.  
if (sex = 2 and age13 = 8 and isced3=2 and AICS = 3 ) WEIGHT1 = 6.48066598.  
if (sex = 2 and age13 = 8 and isced3=2 and AICS = 4 ) WEIGHT1 = 2.57812131.  
if (sex = 2 and age13 = 8 and isced3=3 and AICS = 2 ) WEIGHT1 = 1.20052684.  
if (sex = 2 and age13 = 8 and isced3=3 and AICS = 3 ) WEIGHT1 = 2.99333669.  
if (sex = 2 and age13 = 8 and isced3=3 and AICS = 4 ) WEIGHT1 = 1.56528202.  
if (sex = 2 and age13 = 9 and isced3=1 and AICS = 1 ) WEIGHT1 = 8.77462914.  
if (sex = 2 and age13 = 9 and isced3=1 and AICS = 2 ) WEIGHT1 = 0.31124515.  
if (sex = 2 and age13 = 9 and isced3=1 and AICS = 3 ) WEIGHT1 = 0.58650361.  
if (sex = 2 and age13 = 9 and isced3=1 and AICS = 4 ) WEIGHT1 = 0.35616295.  
if (sex = 2 and age13 = 9 and isced3=2 and AICS = 1 ) WEIGHT1 = 8.77462914.  
if (sex = 2 and age13 = 9 and isced3=2 and AICS = 2 ) WEIGHT1 = 2.99558054.  
if (sex = 2 and age13 = 9 and isced3=2 and AICS = 3 ) WEIGHT1 = 8.56720642.  
if (sex = 2 and age13 = 9 and isced3=2 and AICS = 4 ) WEIGHT1 = 3.34508843.  
if (sex = 2 and age13 = 9 and isced3=3 and AICS = 2 ) WEIGHT1 = 1.61942625.  
if (sex = 2 and age13 = 9 and isced3=3 and AICS = 3 ) WEIGHT1 = 3.34135376.  
if (sex = 2 and age13 = 9 and isced3=3 and AICS = 4 ) WEIGHT1 = 2.2203482.  
if (sex = 2 and age13 = 10 and isced3=1 and AICS = 1 ) WEIGHT1 = 8.77462914.  
if (sex = 2 and age13 = 10 and isced3=1 and AICS = 2 ) WEIGHT1 = 0.58413413.  
if (sex = 2 and age13 = 10 and isced3=1 and AICS = 3 ) WEIGHT1 = 0.73753411.  
if (sex = 2 and age13 = 10 and isced3=1 and AICS = 4 ) WEIGHT1 = 0.54827673.  
if (sex = 2 and age13 = 10 and isced3=2 and AICS = 2 ) WEIGHT1 = 3.3657613.  
if (sex = 2 and age13 = 10 and isced3=2 and AICS = 3 ) WEIGHT1 = 7.92570119.

if (sex = 2 and age13 = 10 and isced3=2 and AICS = 4 ) WEIGHT1 = 5.47949158.  
if (sex = 2 and age13 = 10 and isced3=3 and AICS = 1 ) WEIGHT1 = 6.10400533.  
if (sex = 2 and age13 = 10 and isced3=3 and AICS = 2 ) WEIGHT1 = 1.99861784.  
if (sex = 2 and age13 = 10 and isced3=3 and AICS = 3 ) WEIGHT1 = 2.94359857.  
if (sex = 2 and age13 = 10 and isced3=3 and AICS = 4 ) WEIGHT1 = 4.37074302.  
if (sex = 2 and age13 = 11 and isced3=1 and AICS = 2 ) WEIGHT1 = 1.4627401.  
if (sex = 2 and age13 = 11 and isced3=1 and AICS = 4 ) WEIGHT1 = 1.4627401.  
if (sex = 2 and age13 = 11 and isced3=2 and AICS = 2 ) WEIGHT1 = 3.86815849.  
if (sex = 2 and age13 = 11 and isced3=2 and AICS = 3 ) WEIGHT1 = 3.86815849.  
if (sex = 2 and age13 = 11 and isced3=2 and AICS = 4 ) WEIGHT1 = 3.86815849.  
if (sex = 2 and age13 = 11 and isced3=3 and AICS = 2 ) WEIGHT1 = 6.60753688.  
if (sex = 2 and age13 = 11 and isced3=3 and AICS = 3 ) WEIGHT1 = 6.60753688.  
if (sex = 2 and age13 = 11 and isced3=3 and AICS = 4 ) WEIGHT1 = 6.60753688.  
if (sex = 2 and age13 = 12 and isced3=1 and AICS = 3 ) WEIGHT1 = 1.4627401.  
if (sex = 2 and age13 = 12 and isced3=1 and AICS = 4 ) WEIGHT1 = 1.4627401.  
if (sex = 2 and age13 = 12 and isced3=2 and AICS = 2 ) WEIGHT1 = 3.86815849.  
if (sex = 2 and age13 = 12 and isced3=2 and AICS = 4 ) WEIGHT1 = 3.86815849.  
if (sex = 2 and age13 = 12 and isced3=3 and AICS = 4 ) WEIGHT1 = 6.60753688.  
if (sex = 2 and age13 = 13 and isced3=1 and AICS = 2 ) WEIGHT1 = 1.4627401.  
if (sex = 2 and age13 = 13 and isced3=1 and AICS = 4 ) WEIGHT1 = 1.4627401.  
if (sex = 2 and age13 = 13 and isced3=3 and AICS = 2 ) WEIGHT1 = 6.60753688.  
if (sex = 2 and age13 = 13 and isced3=3 and AICS = 4 ) WEIGHT1 = 6.60753688.

\*\*\*Note: the following observations should be deleted from the sample. In the first one there is no one in the German labour force according to LFS with these characteristics but the national *WageIndicator* dataset has at least 1 observation in its sample.

if (sex = 2 and age13 = 13 and isced3=1 and AICS = 3 ) WEIGHT1 = sysmis.  
if (sex = 1 and age13 = 13 and isced3=3 and AICS = 4 ) WEIGHT1 = sysmis.  
if (sex = 1 and age13 = 12 and isced3=3 and AICS = 4 ) WEIGHT1 = sysmis.  
if (sex = 1 and age13 = 11 and isced3=3 and AICS = 4 ) WEIGHT1 = sysmis.

## 6. WEIGHTING THE POLISH DATA SET BY GENDER, AGE, SECTOR OF ACTIVITY AND EDUACTIONAL LEVEL

```

compute age13 = age.
var lab age13 'age recoded into 13 groups'.
val lab age13 1 '15 to 19' 2 '20 to 24' 3 '25 to 29' 4 '30 to 34' 5 '35 to 39' 6 '40 to
44' 7 '45 to 49' 8 '50 to 54' 9 '55 to 59' 10 '60 to 64' 11 '65 to 69' 12 '70 to 74' 13
'75 and over'.
recode age13 (15 thru 19 = 1) (20 thru 24 = 2) (25 thru 29 = 3) (30 thru 34 = 4)
(35 thru 39 = 5) (40 thru 44 = 6) (45 thru 49 = 7) (50 thru 54 = 8) (55 thru 59 =
9) (60 thru 64 = 10) (65 thru 69 = 11) (70 thru 74 = 12) (75 thru 99 = 13) (else
=sysmis).
execute.
fre age13.
***Generate nace letter codes into Agriculture, industry, construction and services
compute AICS = NACE1NUM.
var lab AICS 'NACE1NUM recoded into 4 groups'.
val lab AICS 1 'Agriculture' 2 'Industry' 3 'Construction' 4 'Services'.
recode AICS (1 thru 2 = 1) (3 thru 5 = 2) (6 = 3) (7 thru 17 = 4) (else =sysmis).
execute.
fre AICS.
***Generate Isced educational levels (from 0 to 6) into lower, medium and high
levels
compute isced3 = EDUISCED.
var lab isced3 'EDUISCED recoded into 3 groups'.
val lab isced3 1 'Low' 2 'Medium' 3 'High'.
recode isced3 (0 thru 2 = 1) (3 thru 4 = 2) (5 thru 6 = 3) (else =sysmis).
execute.
fre isced3.

***Generate variable weight1
compute WEIGHT1=SYSMIS.
for WEIGHT1 (f2.5)
VAR LAB WEIGHT1 'weights by sex, age13, isced3 and AICS'.
if (sex = 1 and age13 = 1 and isced3=1 and AICS = 2 ) WEIGHT1 =0.87671944.
if (sex = 1 and age13 = 1 and isced3=1 and AICS = 4 ) WEIGHT1 =0.87671944.
if (sex = 1 and age13 = 1 and isced3=2 and AICS = 1 ) WEIGHT1 =2.15674614.
if (sex = 1 and age13 = 1 and isced3=2 and AICS = 2 ) WEIGHT1 = 2.15704395.
if (sex = 1 and age13 = 1 and isced3=2 and AICS = 4 ) WEIGHT1 = 0.38097571.
if (sex = 1 and age13 = 2 and isced3=1 and AICS = 4 ) WEIGHT1 = 0.8768405.
if (sex = 1 and age13 = 2 and isced3=2 and AICS = 1 ) WEIGHT1 = 2.15704395.
if (sex = 1 and age13 = 2 and isced3=2 and AICS = 2 ) WEIGHT1 = 2.15704395.
if (sex = 1 and age13 = 2 and isced3=2 and AICS = 3 ) WEIGHT1 = 2.15704395.
if (sex = 1 and age13 = 2 and isced3=2 and AICS = 4 ) WEIGHT1 = 0.65945684.
if (sex = 1 and age13 = 2 and isced3=3 and AICS = 1 ) WEIGHT1 = 0.18027236.
if (sex = 1 and age13 = 2 and isced3=3 and AICS = 2 ) WEIGHT1 = 0.2391021.
if (sex = 1 and age13 = 2 and isced3=3 and AICS = 3 ) WEIGHT1 = 0.18029725.
if (sex = 1 and age13 = 2 and isced3=3 and AICS = 4 ) WEIGHT1 = 0.10668037.
if (sex = 1 and age13 = 3 and isced3=1 and AICS = 1 ) WEIGHT1 = 1.24414186.
if (sex = 1 and age13 = 3 and isced3=1 and AICS = 4 ) WEIGHT1 = 1.24431366.
if (sex = 1 and age13 = 3 and isced3=2 and AICS = 2 ) WEIGHT1 = 2.40837927.
if (sex = 1 and age13 = 3 and isced3=2 and AICS = 3 ) WEIGHT1 = 0.19955868.
if (sex = 1 and age13 = 3 and isced3=2 and AICS = 4 ) WEIGHT1 = 1.01856226.

```

if (sex = 1 and age13 = 3 and isced3=3 and AICS = 1 ) WEIGHT1 = 0.34931964.  
if (sex = 1 and age13 = 3 and isced3=3 and AICS = 2 ) WEIGHT1 = 0.11622687.  
if (sex = 1 and age13 = 3 and isced3=3 and AICS = 3 ) WEIGHT1 = 0.04051966.  
if (sex = 1 and age13 = 3 and isced3=3 and AICS = 4 ) WEIGHT1 = 0.13967207.  
if (sex = 1 and age13 = 4 and isced3=1 and AICS = 2 ) WEIGHT1 = 1.24431366.  
if (sex = 1 and age13 = 4 and isced3=1 and AICS = 4 ) WEIGHT1 = 1.24431366.  
if (sex = 1 and age13 = 4 and isced3=2 and AICS = 2 ) WEIGHT1 = 4.29348205.  
if (sex = 1 and age13 = 4 and isced3=2 and AICS = 3 ) WEIGHT1 = 0.19958624.  
if (sex = 1 and age13 = 4 and isced3=2 and AICS = 4 ) WEIGHT1 = 1.45268648.  
if (sex = 1 and age13 = 4 and isced3=3 and AICS = 1 ) WEIGHT1 = 0.10385914.  
if (sex = 1 and age13 = 4 and isced3=3 and AICS = 2 ) WEIGHT1 = 0.18838909.  
if (sex = 1 and age13 = 4 and isced3=3 and AICS = 3 ) WEIGHT1 = 0.10387348.  
if (sex = 1 and age13 = 4 and isced3=3 and AICS = 4 ) WEIGHT1 = 0.25612989.  
if (sex = 1 and age13 = 5 and isced3=1 and AICS = 2 ) WEIGHT1 = 4.57143905.  
if (sex = 1 and age13 = 5 and isced3=1 and AICS = 4 ) WEIGHT1 = 4.57207029.  
if (sex = 1 and age13 = 5 and isced3=2 and AICS = 2 ) WEIGHT1 = 4.5084144.  
if (sex = 1 and age13 = 5 and isced3=2 and AICS = 3 ) WEIGHT1 = 0.19958624.  
if (sex = 1 and age13 = 5 and isced3=2 and AICS = 4 ) WEIGHT1 = 2.36553119.  
if (sex = 1 and age13 = 5 and isced3=3 and AICS = 1) WEIGHT1 = 0.23687912.  
if (sex = 1 and age13 = 5 and isced3=3 and AICS = 2 ) WEIGHT1 = 0.25721433.  
if (sex = 1 and age13 = 5 and isced3=3 and AICS = 3 ) WEIGHT1 = 0.23691183.  
if (sex = 1 and age13 = 5 and isced3=3 and AICS = 4 ) WEIGHT1 = 0.58010253.  
if (sex = 1 and age13 = 6 and isced3=1 and AICS = 2 ) WEIGHT1 = 4.57207029.  
if (sex = 1 and age13 = 6 and isced3=1 and AICS = 4 ) WEIGHT1 = 4.57207029.  
if (sex = 1 and age13 = 6 and isced3=2 and AICS = 2 ) WEIGHT1 = 10.7857926.  
if (sex = 1 and age13 = 6 and isced3=2 and AICS = 3 ) WEIGHT1 = 1.13406824.  
if (sex = 1 and age13 = 6 and isced3=2 and AICS = 4 ) WEIGHT1 = 3.26930785.  
if (sex = 1 and age13 = 6 and isced3=3 and AICS = 2 ) WEIGHT1 =0.4834987.  
if (sex = 1 and age13 = 6 and isced3=3 and AICS = 3 ) WEIGHT1 =0.25984329.  
if (sex = 1 and age13 = 6 and isced3=3 and AICS = 4 ) WEIGHT1 =0.84266957.  
if (sex = 1 and age13 = 7 and isced3=1 and AICS = 2 ) WEIGHT1 =4.57207029.  
if (sex = 1 and age13 = 7 and isced3=1 and AICS = 4 ) WEIGHT1 =4.57207029.  
if (sex = 1 and age13 = 7 and isced3=2 and AICS = 1 ) WEIGHT1 =10.7872819.  
if (sex = 1 and age13 = 7 and isced3=2 and AICS = 2 ) WEIGHT1 =10.7872819.  
if (sex = 1 and age13 = 7 and isced3=2 and AICS = 3 ) WEIGHT1 =1.13422483.  
if (sex = 1 and age13 = 7 and isced3=2 and AICS = 4 ) WEIGHT1 =3.74794619.  
if (sex = 1 and age13 = 7 and isced3=3 and AICS = 2 ) WEIGHT1 =0.48356546.  
if (sex = 1 and age13 = 7 and isced3=3 and AICS = 3 ) WEIGHT1 =0.25987917.  
if (sex = 1 and age13 = 7 and isced3=3 and AICS = 4 ) WEIGHT1 =1.08127012.  
if (sex = 1 and age13 = 8 and isced3=1 and AICS = 4 ) WEIGHT1 =4.57207029.  
if (sex = 1 and age13 = 8 and isced3=2 and AICS = 2 ) WEIGHT1 =3.21401831.  
if (sex = 1 and age13 = 8 and isced3=2 and AICS = 3 ) WEIGHT1 =1.13422483.  
if (sex = 1 and age13 = 8 and isced3=2 and AICS = 4 ) WEIGHT1 =4.02842688.  
if (sex = 1 and age13 = 8 and isced3=3 and AICS = 2 ) WEIGHT1 =0.54415828.  
if (sex = 1 and age13 = 8 and isced3=3 and AICS = 3 ) WEIGHT1 =0.25987917.  
if (sex = 1 and age13 = 8 and isced3=3 and AICS = 4 ) WEIGHT1 =1.14035583.  
if (sex = 1 and age13 = 9 and isced3=2 and AICS = 4 ) WEIGHT1 =5.19534424.  
if (sex = 1 and age13 = 9 and isced3=3 and AICS = 2 ) WEIGHT1 =5.19534424.  
if (sex = 1 and age13 = 9 and isced3=3 and AICS = 4 ) WEIGHT1 =1.91099518.  
if (sex = 1 and age13 = 10 and isced3=3 and AICS = 4 ) WEIGHT1 =1.91125906.  
if (sex = 2 and age13 = 1 and isced3=1 and AICS = 2) WEIGHT1 = 2.13534647.  
if (sex = 2 and age13 = 1 and isced3=1 and AICS = 3 ) WEIGHT1 = 2.13564132.  
if (sex = 2 and age13 = 1 and isced3=1 and AICS = 4 ) WEIGHT1 = 2.13564132.  
if (sex = 2 and age13 = 1 and isced3=2 and AICS = 1 ) WEIGHT1 = 2.78187254.  
if (sex = 2 and age13 = 1 and isced3=2 and AICS = 2 ) WEIGHT1 = 2.92331111.  
if (sex = 2 and age13 = 1 and isced3=2 and AICS = 3 ) WEIGHT1 = 2.78187254.

if (sex = 2 and age13 = 1 and isced3=2 and AICS = 4 ) WEIGHT1 = 0.75246932.  
if (sex = 2 and age13 = 2 and isced3=1 and AICS = 2 ) WEIGHT1 =2.13564132.  
if (sex = 2 and age13 = 2 and isced3=1 and AICS = 3 ) WEIGHT1 =2.13564132.  
if (sex = 2 and age13 = 2 and isced3=1 and AICS = 4 ) WEIGHT1 =2.13564132.  
if (sex = 2 and age13 = 2 and isced3=2 and AICS = 2 ) WEIGHT1 =2.92331111.  
if (sex = 2 and age13 = 2 and isced3=2 and AICS = 3 ) WEIGHT1 =2.78187254.  
if (sex = 2 and age13 = 2 and isced3=2 and AICS = 4 ) WEIGHT1 =0.93050309.  
if (sex = 2 and age13 = 2 and isced3=3 and AICS = 1 ) WEIGHT1 =0.18945847.  
if (sex = 2 and age13 = 2 and isced3=3 and AICS = 2 ) WEIGHT1 =0.18945847.  
if (sex = 2 and age13 = 2 and isced3=3 and AICS = 3 ) WEIGHT1 =0.10874696.  
if (sex = 2 and age13 = 2 and isced3=3 and AICS = 4 ) WEIGHT1 =0.08209381.  
if (sex = 2 and age13 = 3 and isced3=1 and AICS = 2 ) WEIGHT1 =1.17600445.  
if (sex = 2 and age13 = 3 and isced3=1 and AICS = 3 ) WEIGHT1 =2.00170177.  
if (sex = 2 and age13 = 3 and isced3=1 and AICS = 4 ) WEIGHT1 =0.66855376.  
if (sex = 2 and age13 = 3 and isced3=2 and AICS = 1 ) WEIGHT1 =10.4933045.  
if (sex = 2 and age13 = 3 and isced3=2 and AICS = 2 ) WEIGHT1 =2.78360994.  
if (sex = 2 and age13 = 3 and isced3=2 and AICS = 3 ) WEIGHT1 =10.4933045.  
if (sex = 2 and age13 = 3 and isced3=2 and AICS = 4 ) WEIGHT1 =1.18747544.  
if (sex = 2 and age13 = 3 and isced3=3 and AICS = 1 ) WEIGHT1 =0.21622587.  
if (sex = 2 and age13 = 3 and isced3=3 and AICS = 2 ) WEIGHT1 =0.21622587.  
if (sex = 2 and age13 = 3 and isced3=3 and AICS = 3 ) WEIGHT1 =0.07973684.  
if (sex = 2 and age13 = 3 and isced3=3 and AICS = 4 ) WEIGHT1 =0.13389123.  
if (sex = 2 and age13 = 4 and isced3=1 and AICS = 2 ) WEIGHT1 =1.17600445.  
if (sex = 2 and age13 = 4 and isced3=1 and AICS = 3 ) WEIGHT1 =2.00170177.  
if (sex = 2 and age13 = 4 and isced3=1 and AICS = 4 ) WEIGHT1 =0.49777354.  
if (sex = 2 and age13 = 4 and isced3=2 and AICS = 1 ) WEIGHT1 =10.4933045.  
if (sex = 2 and age13 = 4 and isced3=2 and AICS = 2 ) WEIGHT1 =3.7540649.  
if (sex = 2 and age13 = 4 and isced3=2 and AICS = 3 ) WEIGHT1 =10.4933045.  
if (sex = 2 and age13 = 4 and isced3=2 and AICS = 4 ) WEIGHT1 =1.44809097.  
if (sex = 2 and age13 = 4 and isced3=3 and AICS = 1 ) WEIGHT1 =0.22171343.  
if (sex = 2 and age13 = 4 and isced3=3 and AICS = 2 ) WEIGHT1 =0.22171343.  
if (sex = 2 and age13 = 4 and isced3=3 and AICS = 3 ) WEIGHT1 =0.17912428.  
if (sex = 2 and age13 = 4 and isced3=3 and AICS = 4 ) WEIGHT1 =0.22526044.  
if (sex = 2 and age13 = 5 and isced3=1 and AICS = 1 ) WEIGHT1 =2.95744625.  
if (sex = 2 and age13 = 5 and isced3=1 and AICS = 2 ) WEIGHT1 =2.95744625.  
if (sex = 2 and age13 = 5 and isced3=1 and AICS = 3 ) WEIGHT1 =2.00170177.  
if (sex = 2 and age13 = 5 and isced3=1 and AICS = 4 ) WEIGHT1 =0.99289376.  
if (sex = 2 and age13 = 5 and isced3=2 and AICS = 1 ) WEIGHT1 =15.9154472.  
if (sex = 2 and age13 = 5 and isced3=2 and AICS = 2 ) WEIGHT1 =5.07919841.  
if (sex = 2 and age13 = 5 and isced3=2 and AICS = 3 ) WEIGHT1 =15.9154472.  
if (sex = 2 and age13 = 5 and isced3=2 and AICS = 4 ) WEIGHT1 =3.10202959.  
if (sex = 2 and age13 = 5 and isced3=3 and AICS = 2 ) WEIGHT1 =0.3523507.  
if (sex = 2 and age13 = 5 and isced3=3 and AICS = 3 ) WEIGHT1 =0.2493259.  
if (sex = 2 and age13 = 5 and isced3=3 and AICS = 4 ) WEIGHT1 =0.41731123.  
if (sex = 2 and age13 = 6 and isced3=1 and AICS = 1) WEIGHT1 = 2.95744625.  
if (sex = 2 and age13 = 6 and isced3=1 and AICS = 2 ) WEIGHT1 = 2.95744625.  
if (sex = 2 and age13 = 6 and isced3=1 and AICS = 3 ) WEIGHT1 = 2.00662597.  
if (sex = 2 and age13 = 6 and isced3=1 and AICS = 4 ) WEIGHT1 = 0.99289376.  
if (sex = 2 and age13 = 6 and isced3=2 and AICS = 2 ) WEIGHT1 = 4.97762428.  
if (sex = 2 and age13 = 6 and isced3=2 and AICS = 3 ) WEIGHT1 = 15.9154472.  
if (sex = 2 and age13 = 6 and isced3=2 and AICS = 4 ) WEIGHT1 = 4.06511146.  
if (sex = 2 and age13 = 6 and isced3=3 and AICS = 2 ) WEIGHT1 =0.69666707.  
if (sex = 2 and age13 = 6 and isced3=3 and AICS = 4 ) WEIGHT1 =0.85706147.  
if (sex = 2 and age13 = 7 and isced3=1 and AICS = 2 ) WEIGHT1 =1.95522528.  
if (sex = 2 and age13 = 7 and isced3=1 and AICS = 3 ) WEIGHT1 =2.00662597.  
if (sex = 2 and age13 = 7 and isced3=1 and AICS = 4 ) WEIGHT1 =1.29878603.

if (sex = 2 and age13 = 7 and isced3=2 and AICS = 1 ) WEIGHT1 =17.1649105.  
 if (sex = 2 and age13 = 7 and isced3=2 and AICS = 2 ) WEIGHT1 =4.01857509.  
 if (sex = 2 and age13 = 7 and isced3=2 and AICS = 3 ) WEIGHT1 =17.1649105.  
 if (sex = 2 and age13 = 7 and isced3=2 and AICS = 4 ) WEIGHT1 =7.43122584.  
 if (sex = 2 and age13 = 7 and isced3=3 and AICS = 2 ) WEIGHT1 =0.43484054.  
 if (sex = 2 and age13 = 7 and isced3=3 and AICS = 3 ) WEIGHT1 =1.05135506.  
 if (sex = 2 and age13 = 7 and isced3=3 and AICS = 4 ) WEIGHT1 =1.24552497.  
 if (sex = 2 and age13 = 8 and isced3=1 and AICS = 2 ) WEIGHT1 =1.95522528.  
 if (sex = 2 and age13 = 8 and isced3=1 and AICS = 4 ) WEIGHT1 =1.29878603.  
 if (sex = 2 and age13 = 8 and isced3=2 and AICS = 2 ) WEIGHT1 =6.86676143.  
 if (sex = 2 and age13 = 8 and isced3=2 and AICS = 3 ) WEIGHT1 =17.1649105.  
 if (sex = 2 and age13 = 8 and isced3=2 and AICS = 4 ) WEIGHT1 =5.66629676.  
 if (sex = 2 and age13 = 8 and isced3=3 and AICS = 1 ) WEIGHT1 =1.58263092.  
 if (sex = 2 and age13 = 8 and isced3=3 and AICS = 2 ) WEIGHT1 =1.58263092.  
 if (sex = 2 and age13 = 8 and isced3=3 and AICS = 3 ) WEIGHT1 =1.05135506.  
 if (sex = 2 and age13 = 8 and isced3=3 and AICS = 4 ) WEIGHT1 =1.41268186.  
 if (sex = 2 and age13 = 9 and isced3=1 and AICS = 2 ) WEIGHT1 =1.95522528.  
 if (sex = 2 and age13 = 9 and isced3=1 and AICS = 3 ) WEIGHT1 =2.00662597.  
 if (sex = 2 and age13 = 9 and isced3=1 and AICS = 4 ) WEIGHT1 =1.29878603.  
 if (sex = 2 and age13 = 9 and isced3=2 and AICS = 2 ) WEIGHT1 =7.80065217.  
 if (sex = 2 and age13 = 9 and isced3=2 and AICS = 3 ) WEIGHT1 = 7.80065217.  
 if (sex = 2 and age13 = 9 and isced3=2 and AICS = 4 ) WEIGHT1 =7.80065217.  
 if (sex = 2 and age13 = 9 and isced3=3 and AICS = 2 ) WEIGHT1 =1.58263092.  
 if (sex = 2 and age13 = 9 and isced3=3 and AICS = 3 ) WEIGHT1 =1.05135506.  
 if (sex = 2 and age13 = 9 and isced3=3 and AICS = 4 ) WEIGHT1 =1.69486258.  
 if (sex = 2 and age13 = 10 and isced3=1 and AICS = 2 ) WEIGHT1 =1.95522528.  
 if (sex = 2 and age13 = 10 and isced3=2 and AICS = 2 ) WEIGHT1 =7.80065217.  
 if (sex = 2 and age13 = 10 and isced3=2 and AICS = 4 ) WEIGHT1 =7.80065217.  
 if (sex = 2 and age13 = 10 and isced3=3 and AICS = 2 ) WEIGHT1 =1.58263092.  
 if (sex = 2 and age13 = 10 and isced3=3 and AICS = 3 ) WEIGHT1 =1.05135506.  
 if (sex = 2 and age13 = 10 and isced3=3 and AICS = 4 ) WEIGHT1 =1.69486258.  
 if (sex = 2 and age13 = 13 and isced3=3 and AICS = 4 ) WEIGHT1 =1.69486258.

\*\*\*Note: the following observations should be deleted from the sample because there is no one in Polish force (according to LFS) with these characteristics but the national *WageIndicator* dataset has at least 1 observation in its sample.

if (sex = 1 and age13 = 1 and isced3=3 and AICS = 2) WEIGHT1 = sysmis.  
 if (sex = 1 and age13 = 1 and isced3=3 and AICS = 3) WEIGHT1 = sysmis.  
 if (sex = 1 and age13 = 1 and isced3=3 and AICS = 4) WEIGHT1 = sysmis.  
 if (sex = 2 and age13 = 1 and isced3=3 and AICS = 1) WEIGHT1 = sysmis.  
 if (sex = 2 and age13 = 1 and isced3=3 and AICS = 2) WEIGHT1 = sysmis.  
 if (sex = 2 and age13 = 1 and isced3=3 and AICS = 4) WEIGHT1 = sysmis.  
 if (sex = 2 and age13 = 13 and isced3=1 and AICS = 4) WEIGHT1 = sysmis.

## 7. WEIGHTING THE BELGIUM DATA SET BY GENDER, AGE, SECTOR OF ACTIVITY AND EDUACTIONAL LEVEL

```
compute WEIGHT1=SYSMIS.  
for WEIGHT1 (f2.5)  
VAR LAB WEIGHT1 'weights by sex, age13, isced3 and AICS'.  
if (sex = 1 and age13 = 1 and isced3=1 and AICS = 1 ) WEIGHT1 = 2.06045163.  
if (sex = 1 and age13 = 1 and isced3=1 and AICS = 2 ) WEIGHT1 = 2.06045163.  
if (sex = 1 and age13 = 1 and isced3=1 and AICS = 4 ) WEIGHT1 = 2.06045163.  
if (sex = 1 and age13 = 1 and isced3=2 and AICS = 2 ) WEIGHT1 = 1.20513878.  
if (sex = 1 and age13 = 1 and isced3=2 and AICS = 4 ) WEIGHT1 = 1.20513878.  
if (sex = 1 and age13 = 1 and isced3=3 and AICS = 4 ) WEIGHT1 = 0.05371744.  
if (sex = 1 and age13 = 2 and isced3=1 and AICS = 1 ) WEIGHT1 = 1.12501712.  
if (sex = 1 and age13 = 2 and isced3=1 and AICS = 2 ) WEIGHT1 = 1.12501712.  
if (sex = 1 and age13 = 2 and isced3=1 and AICS = 3 ) WEIGHT1 = 1.12501712.  
if (sex = 1 and age13 = 2 and isced3=1 and AICS = 4 ) WEIGHT1 = 0.89294124.  
if (sex = 1 and age13 = 2 and isced3=2 and AICS = 1 ) WEIGHT1 = 0.74631383.  
if (sex = 1 and age13 = 2 and isced3=2 and AICS = 2 ) WEIGHT1 = 1.11743771.  
if (sex = 1 and age13 = 2 and isced3=2 and AICS = 3 ) WEIGHT1 = 0.74631383.  
if (sex = 1 and age13 = 2 and isced3=2 and AICS = 4 ) WEIGHT1 = 0.82378249.  
if (sex = 1 and age13 = 2 and isced3=3 and AICS = 2 ) WEIGHT1 = 0.2650394.  
if (sex = 1 and age13 = 2 and isced3=3 and AICS = 3 ) WEIGHT1 = 0.24088625.  
if (sex = 1 and age13 = 2 and isced3=3 and AICS = 4 ) WEIGHT1 = 0.5677628.  
if (sex = 1 and age13 = 3 and isced3=1 and AICS = 1 ) WEIGHT1 = 0.6072257.  
if (sex = 1 and age13 = 3 and isced3=1 and AICS = 2 ) WEIGHT1 = 0.6072257.  
if (sex = 1 and age13 = 3 and isced3=1 and AICS = 4 ) WEIGHT1 = 1.07133597.  
if (sex = 1 and age13 = 3 and isced3=2 and AICS = 1 ) WEIGHT1 = 0.74631383.  
if (sex = 1 and age13 = 3 and isced3=2 and AICS = 2 ) WEIGHT1 = 1.04838843.  
if (sex = 1 and age13 = 3 and isced3=2 and AICS = 3 ) WEIGHT1 = 0.74631383.  
if (sex = 1 and age13 = 3 and isced3=2 and AICS = 4 ) WEIGHT1 = 1.00257638.  
if (sex = 1 and age13 = 3 and isced3=3 and AICS = 1 ) WEIGHT1 = 1.86560434.  
if (sex = 1 and age13 = 3 and isced3=3 and AICS = 2 ) WEIGHT1 = 0.33371364.  
if (sex = 1 and age13 = 3 and isced3=3 and AICS = 3 ) WEIGHT1 = 0.13001574.  
if (sex = 1 and age13 = 3 and isced3=3 and AICS = 4 ) WEIGHT1 = 0.57440817.  
if (sex = 1 and age13 = 4 and isced3=1 and AICS = 2 ) WEIGHT1 = 0.52074949.  
if (sex = 1 and age13 = 4 and isced3=1 and AICS = 3 ) WEIGHT1 = 1.51047562.  
if (sex = 1 and age13 = 4 and isced3=1 and AICS = 4 ) WEIGHT1 = 1.59620699.  
if (sex = 1 and age13 = 4 and isced3=2 and AICS = 1 ) WEIGHT1 = 6.04817141.  
if (sex = 1 and age13 = 4 and isced3=2 and AICS = 2 ) WEIGHT1 = 0.79117038.  
if (sex = 1 and age13 = 4 and isced3=2 and AICS = 3 ) WEIGHT1 = 0.70979109.  
if (sex = 1 and age13 = 4 and isced3=2 and AICS = 4 ) WEIGHT1 = 1.30083336.  
if (sex = 1 and age13 = 4 and isced3=3 and AICS = 1 ) WEIGHT1 = 1.86560434.  
if (sex = 1 and age13 = 4 and isced3=3 and AICS = 2 ) WEIGHT1 = 0.42410591.  
if (sex = 1 and age13 = 4 and isced3=3 and AICS = 3 ) WEIGHT1 = 0.21233655.  
if (sex = 1 and age13 = 4 and isced3=3 and AICS = 4 ) WEIGHT1 = 0.78734485.  
if (sex = 1 and age13 = 5 and isced3=1 and AICS = 1 ) WEIGHT1 = 6.04817141.  
if (sex = 1 and age13 = 5 and isced3=1 and AICS = 2 ) WEIGHT1 = 1.19656861.  
if (sex = 1 and age13 = 5 and isced3=1 and AICS = 3 ) WEIGHT1 = 1.51047562.  
if (sex = 1 and age13 = 5 and isced3=1 and AICS = 4 ) WEIGHT1 = 1.63853741.  
if (sex = 1 and age13 = 5 and isced3=2 and AICS = 2 ) WEIGHT1 = 1.17025272.  
if (sex = 1 and age13 = 5 and isced3=2 and AICS = 3 ) WEIGHT1 = 0.43672427.  
if (sex = 1 and age13 = 5 and isced3=2 and AICS = 4 ) WEIGHT1 = 1.42465612.  
if (sex = 1 and age13 = 5 and isced3=3 and AICS = 2 ) WEIGHT1 = 0.45359535.
```



if (sex = 1 and age13 = 5 and isced3=3 and AICS = 3 ) WEIGHT1 = 0.10317969.  
if (sex = 1 and age13 = 5 and isced3=3 and AICS = 4 ) WEIGHT1 = 0.98079002.  
if (sex = 1 and age13 = 6 and isced3=1 and AICS = 1 ) WEIGHT1 = 6.04817141.  
if (sex = 1 and age13 = 6 and isced3=1 and AICS = 2 ) WEIGHT1 = 1.63633985.  
if (sex = 1 and age13 = 6 and isced3=1 and AICS = 3 ) WEIGHT1 = 1.51047562.  
if (sex = 1 and age13 = 6 and isced3=1 and AICS = 4 ) WEIGHT1 = 1.86502438.  
if (sex = 1 and age13 = 6 and isced3=2 and AICS = 1 ) WEIGHT1 = 6.04817141.  
if (sex = 1 and age13 = 6 and isced3=2 and AICS = 2 ) WEIGHT1 = 0.64866.  
if (sex = 1 and age13 = 6 and isced3=2 and AICS = 3 ) WEIGHT1 = 0.73271241.  
if (sex = 1 and age13 = 6 and isced3=2 and AICS = 4 ) WEIGHT1 = 1.44201099.  
if (sex = 1 and age13 = 6 and isced3=3 and AICS = 1 ) WEIGHT1 = 1.86560434.  
if (sex = 1 and age13 = 6 and isced3=3 and AICS = 2 ) WEIGHT1 = 0.49266191.  
if (sex = 1 and age13 = 6 and isced3=3 and AICS = 3 ) WEIGHT1 = 0.25684178.  
if (sex = 1 and age13 = 6 and isced3=3 and AICS = 4 ) WEIGHT1 = 1.0341409.  
if (sex = 1 and age13 = 7 and isced3=1 and AICS = 1 ) WEIGHT1 = 6.04817141.  
if (sex = 1 and age13 = 7 and isced3=1 and AICS = 2 ) WEIGHT1 = 1.68718186.  
if (sex = 1 and age13 = 7 and isced3=1 and AICS = 3 ) WEIGHT1 = 1.40484559.  
if (sex = 1 and age13 = 7 and isced3=1 and AICS = 4 ) WEIGHT1 = 2.19837325.  
if (sex = 1 and age13 = 7 and isced3=2 and AICS = 1 ) WEIGHT1 = 6.04817141.  
if (sex = 1 and age13 = 7 and isced3=2 and AICS = 2 ) WEIGHT1 = 0.59658241.  
if (sex = 1 and age13 = 7 and isced3=2 and AICS = 3 ) WEIGHT1 = 0.39492972.  
if (sex = 1 and age13 = 7 and isced3=2 and AICS = 4 ) WEIGHT1 = 1.60330393.  
if (sex = 1 and age13 = 7 and isced3=3 and AICS = 1 ) WEIGHT1 = 1.86560434.  
if (sex = 1 and age13 = 7 and isced3=3 and AICS = 2 ) WEIGHT1 = 0.47430322.  
if (sex = 1 and age13 = 7 and isced3=3 and AICS = 3 ) WEIGHT1 = 0.11604758.  
if (sex = 1 and age13 = 7 and isced3=3 and AICS = 4 ) WEIGHT1 = 1.2108766.  
if (sex = 1 and age13 = 8 and isced3=1 and AICS = 2 ) WEIGHT1 = 2.27445018.  
if (sex = 1 and age13 = 8 and isced3=1 and AICS = 4 ) WEIGHT1 = 2.92645479.  
if (sex = 1 and age13 = 8 and isced3=2 and AICS = 1 ) WEIGHT1 = 6.04817141.  
if (sex = 1 and age13 = 8 and isced3=2 and AICS = 2 ) WEIGHT1 = 0.94633915.  
if (sex = 1 and age13 = 8 and isced3=2 and AICS = 3 ) WEIGHT1 = 0.38376797.  
if (sex = 1 and age13 = 8 and isced3=2 and AICS = 4 ) WEIGHT1 = 1.66404613.  
if (sex = 1 and age13 = 8 and isced3=3 and AICS = 1 ) WEIGHT1 = 1.86560434.  
if (sex = 1 and age13 = 8 and isced3=3 and AICS = 2 ) WEIGHT1 = 0.42843095.  
if (sex = 1 and age13 = 8 and isced3=3 and AICS = 3 ) WEIGHT1 = 0.31181676.  
if (sex = 1 and age13 = 8 and isced3=3 and AICS = 4 ) WEIGHT1 = 1.47839546.  
if (sex = 1 and age13 = 9 and isced3=1 and AICS = 2 ) WEIGHT1 = 1.58582339.  
if (sex = 1 and age13 = 9 and isced3=1 and AICS = 3 ) WEIGHT1 = 1.40484559.  
if (sex = 1 and age13 = 9 and isced3=1 and AICS = 4 ) WEIGHT1 = 4.21711658.  
if (sex = 1 and age13 = 9 and isced3=2 and AICS = 1 ) WEIGHT1 = 6.04817141.  
if (sex = 1 and age13 = 9 and isced3=2 and AICS = 2 ) WEIGHT1 = 0.84759394.  
if (sex = 1 and age13 = 9 and isced3=2 and AICS = 3 ) WEIGHT1 = 0.38376797.  
if (sex = 1 and age13 = 9 and isced3=2 and AICS = 4 ) WEIGHT1 = 3.4861325.  
if (sex = 1 and age13 = 9 and isced3=3 and AICS = 2 ) WEIGHT1 = 0.42843095.  
if (sex = 1 and age13 = 9 and isced3=3 and AICS = 3 ) WEIGHT1 = 0.31181676.  
if (sex = 1 and age13 = 9 and isced3=3 and AICS = 4 ) WEIGHT1 = 2.05858691.  
if (sex = 1 and age13 = 10 and isced3=1 and AICS = 2 ) WEIGHT1 = 1.58582339.  
if (sex = 1 and age13 = 10 and isced3=1 and AICS = 4 ) WEIGHT1 = 4.21711658.  
if (sex = 1 and age13 = 10 and isced3=2 and AICS = 4 ) WEIGHT1 = 3.24879533.  
if (sex = 1 and age13 = 10 and isced3=3 and AICS = 3 ) WEIGHT1 = 0.31181676.  
if (sex = 1 and age13 = 10 and isced3=3 and AICS = 4 ) WEIGHT1 = 2.05858691.  
if (sex = 1 and age13 = 11 and isced3=2 and AICS = 4 ) WEIGHT1 = 3.24879533.  
if (sex = 1 and age13 = 11 and isced3=3 and AICS = 4 ) WEIGHT1 = 2.05858691.  
if (sex = 1 and age13 = 12 and isced3=1 and AICS = 2 ) WEIGHT1 = 1.58582339.  
if (sex = 1 and age13 = 13 and isced3=1 and AICS = 4 ) WEIGHT1 = 4.21711658.  
if (sex = 2 and age13 = 1 and isced3=1 and AICS = 3 ) WEIGHT1 = 6.2761013.

if (sex = 2 and age13 = 1 and isced3=1 and AICS = 4 ) WEIGHT1 = 6.2761013.  
if (sex = 2 and age13 = 1 and isced3=2 and AICS = 1 ) WEIGHT1 = 1.87681104.  
if (sex = 2 and age13 = 1 and isced3=2 and AICS = 2 ) WEIGHT1 = 1.87681104.  
if (sex = 2 and age13 = 1 and isced3=2 and AICS = 3 ) WEIGHT1 = 1.87681104.  
if (sex = 2 and age13 = 1 and isced3=2 and AICS = 4 ) WEIGHT1 = 1.53024529.  
if (sex = 2 and age13 = 1 and isced3=3 and AICS = 4 ) WEIGHT1 = 0.04321376.  
if (sex = 2 and age13 = 2 and isced3=1 and AICS = 2 ) WEIGHT1 =1.83047027.  
if (sex = 2 and age13 = 2 and isced3=1 and AICS = 3 ) WEIGHT1 = 2.68559186.  
if (sex = 2 and age13 = 2 and isced3=1 and AICS = 4 ) WEIGHT1 = 2.66819021.  
if (sex = 2 and age13 = 2 and isced3=2 and AICS = 1 ) WEIGHT1 = 7.14033996.  
if (sex = 2 and age13 = 2 and isced3=2 and AICS = 2 ) WEIGHT1 = 2.17883718.  
if (sex = 2 and age13 = 2 and isced3=2 and AICS = 3 ) WEIGHT1 = 2.82323225.  
if (sex = 2 and age13 = 2 and isced3=2 and AICS = 4 ) WEIGHT1 = 1.65266633.  
if (sex = 2 and age13 = 2 and isced3=3 and AICS = 1 ) WEIGHT1 = 0.75763328.  
if (sex = 2 and age13 = 2 and isced3=3 and AICS = 2 ) WEIGHT1 = 0.25103899.  
if (sex = 2 and age13 = 2 and isced3=3 and AICS = 3 ) WEIGHT1 = 0.16942348.  
if (sex = 2 and age13 = 2 and isced3=3 and AICS = 4 ) WEIGHT1 = 0.35805925.  
if (sex = 2 and age13 = 3 and isced3=1 and AICS = 1 ) WEIGHT1 = 1.31724618.  
if (sex = 2 and age13 = 3 and isced3=1 and AICS = 2 ) WEIGHT1 = 1.59663153.  
if (sex = 2 and age13 = 3 and isced3=1 and AICS = 3 ) WEIGHT1 = 1.98314213.  
if (sex = 2 and age13 = 3 and isced3=1 and AICS = 4 ) WEIGHT1 = 1.34108344.  
if (sex = 2 and age13 = 3 and isced3=2 and AICS = 1 ) WEIGHT1 = 7.14033996.  
if (sex = 2 and age13 = 3 and isced3=2 and AICS = 2 ) WEIGHT1 = 0.96775208.  
if (sex = 2 and age13 = 3 and isced3=2 and AICS = 3 ) WEIGHT1 = 1.68656233.  
if (sex = 2 and age13 = 3 and isced3=2 and AICS = 4 ) WEIGHT1 = 1.04176686.  
if (sex = 2 and age13 = 3 and isced3=3 and AICS = 1 ) WEIGHT1 = 0.75763328.  
if (sex = 2 and age13 = 3 and isced3=3 and AICS = 2 ) WEIGHT1 = 0.31982719.  
if (sex = 2 and age13 = 3 and isced3=3 and AICS = 3 ) WEIGHT1 = 0.30748403.  
if (sex = 2 and age13 = 3 and isced3=3 and AICS = 4 ) WEIGHT1 = 0.42513396.  
if (sex = 2 and age13 = 4 and isced3=1 and AICS = 1 ) WEIGHT1 = 1.31724618.  
if (sex = 2 and age13 = 4 and isced3=1 and AICS = 2 ) WEIGHT1 = 1.77149058.  
if (sex = 2 and age13 = 4 and isced3=1 and AICS = 3 ) WEIGHT1 = 2.40528376.  
if (sex = 2 and age13 = 4 and isced3=1 and AICS = 4 ) WEIGHT1 = 1.73500538.  
if (sex = 2 and age13 = 4 and isced3=2 and AICS = 1 ) WEIGHT1 = 7.14033996.  
if (sex = 2 and age13 = 4 and isced3=2 and AICS = 2 ) WEIGHT1 = 0.94625016.  
if (sex = 2 and age13 = 4 and isced3=2 and AICS = 3 ) WEIGHT1 = 1.84995292.  
if (sex = 2 and age13 = 4 and isced3=2 and AICS = 4 ) WEIGHT1 = 1.12008633.  
if (sex = 2 and age13 = 4 and isced3=3 and AICS = 1 ) WEIGHT1 = 0.75763328.  
if (sex = 2 and age13 = 4 and isced3=3 and AICS = 2 ) WEIGHT1 = 0.36628596.  
if (sex = 2 and age13 = 4 and isced3=3 and AICS = 3 ) WEIGHT1 = 0.29445828.  
if (sex = 2 and age13 = 4 and isced3=3 and AICS = 4 ) WEIGHT1 = 0.55485202.  
if (sex = 2 and age13 = 5 and isced3=1 and AICS = 1 ) WEIGHT1 = 10.0584004.  
if (sex = 2 and age13 = 5 and isced3=1 and AICS = 2 ) WEIGHT1 = 1.50969251.  
if (sex = 2 and age13 = 5 and isced3=1 and AICS = 3 ) WEIGHT1 = 2.84229256.  
if (sex = 2 and age13 = 5 and isced3=1 and AICS = 4 ) WEIGHT1 = 1.75337515.  
if (sex = 2 and age13 = 5 and isced3=2 and AICS = 1 ) WEIGHT1 = 7.14033996.  
if (sex = 2 and age13 = 5 and isced3=2 and AICS = 2 ) WEIGHT1 = 0.92389235.  
if (sex = 2 and age13 = 5 and isced3=2 and AICS = 3 ) WEIGHT1 = 1.50098289.  
if (sex = 2 and age13 = 5 and isced3=2 and AICS = 4 ) WEIGHT1 = 1.27337782.  
if (sex = 2 and age13 = 5 and isced3=3 and AICS = 1 ) WEIGHT1 = 0.75497042.  
if (sex = 2 and age13 = 5 and isced3=3 and AICS = 2 ) WEIGHT1 = 0.38268026.  
if (sex = 2 and age13 = 5 and isced3=3 and AICS = 3 ) WEIGHT1 = 0.53418239.  
if (sex = 2 and age13 = 5 and isced3=3 and AICS = 4 ) WEIGHT1 = 0.65915686.  
if (sex = 2 and age13 = 6 and isced3=1 and AICS = 2 ) WEIGHT1 = 1.10984917.  
if (sex = 2 and age13 = 6 and isced3=1 and AICS = 3 ) WEIGHT1 = 2.53393052.  
if (sex = 2 and age13 = 6 and isced3=1 and AICS = 4 ) WEIGHT1 = 1.63072336.

if (sex = 2 and age13 = 6 and isced3=2 and AICS = 1 ) WEIGHT1 = 4.62829569.  
if (sex = 2 and age13 = 6 and isced3=2 and AICS = 2 ) WEIGHT1 =0.93010218.  
if (sex = 2 and age13 = 6 and isced3=2 and AICS = 3 ) WEIGHT1 =1.64360027.  
if (sex = 2 and age13 = 6 and isced3=2 and AICS = 4 ) WEIGHT1 = 1.25955078.  
if (sex = 2 and age13 = 6 and isced3=3 and AICS = 2 ) WEIGHT1 =0.33782606.  
if (sex = 2 and age13 = 6 and isced3=3 and AICS = 3 ) WEIGHT1 =0.44076093.  
if (sex = 2 and age13 = 6 and isced3=3 and AICS = 4 ) WEIGHT1 =0.73121315.  
if (sex = 2 and age13 = 7 and isced3=1 and AICS = 1 ) WEIGHT1 = 10.0584004.  
if (sex = 2 and age13 = 7 and isced3=1 and AICS = 2 ) WEIGHT1 = 1.15835239.  
if (sex = 2 and age13 = 7 and isced3=1 and AICS = 3 ) WEIGHT1 = 1.72536252.  
if (sex = 2 and age13 = 7 and isced3=1 and AICS = 4 ) WEIGHT1 = 1.74256618.  
if (sex = 2 and age13 = 7 and isced3=2 and AICS = 1 ) WEIGHT1 = 4.62829569.  
if (sex = 2 and age13 = 7 and isced3=2 and AICS = 2 ) WEIGHT1 = 0.65506644.  
if (sex = 2 and age13 = 7 and isced3=2 and AICS = 3 ) WEIGHT1 = 1.48365097.  
if (sex = 2 and age13 = 7 and isced3=2 and AICS = 4 ) WEIGHT1 = 1.14448079.  
if (sex = 2 and age13 = 7 and isced3=3 and AICS = 1 ) WEIGHT1 = 0.75497042.  
if (sex = 2 and age13 = 7 and isced3=3 and AICS = 2 ) WEIGHT1 = 0.53231443.  
if (sex = 2 and age13 = 7 and isced3=3 and AICS = 3 ) WEIGHT1 = 0.54217008.  
if (sex = 2 and age13 = 7 and isced3=3 and AICS = 4 ) WEIGHT1 = 0.82563828.  
if (sex = 2 and age13 = 8 and isced3=1 and AICS = 1 ) WEIGHT1 = 10.0584004.  
if (sex = 2 and age13 = 8 and isced3=1 and AICS = 2 ) WEIGHT1 = 1.22869451.  
if (sex = 2 and age13 = 8 and isced3=1 and AICS = 3 ) WEIGHT1 = 2.64241024.  
if (sex = 2 and age13 = 8 and isced3=1 and AICS = 4 ) WEIGHT1 = 1.60763107.  
if (sex = 2 and age13 = 8 and isced3=2 and AICS = 1 ) WEIGHT1 = 4.62829569.  
if (sex = 2 and age13 = 8 and isced3=2 and AICS = 2 ) WEIGHT1 = 0.8680169.  
if (sex = 2 and age13 = 8 and isced3=2 and AICS = 3 ) WEIGHT1 = 1.26668835.  
if (sex = 2 and age13 = 8 and isced3=2 and AICS = 4 ) WEIGHT1 = 1.35707985.  
if (sex = 2 and age13 = 8 and isced3=3 and AICS = 1 ) WEIGHT1 = 0.75497042.  
if (sex = 2 and age13 = 8 and isced3=3 and AICS = 2 ) WEIGHT1 = 0.48613643.  
if (sex = 2 and age13 = 8 and isced3=3 and AICS = 3 ) WEIGHT1 = 0.68324142.  
if (sex = 2 and age13 = 8 and isced3=3 and AICS = 4 ) WEIGHT1 = 0.96610547.  
if (sex = 2 and age13 = 9 and isced3=1 and AICS = 2 ) WEIGHT1 = 1.07747276.  
if (sex = 2 and age13 = 9 and isced3=1 and AICS = 3 ) WEIGHT1 = 3.49118746.  
if (sex = 2 and age13 = 9 and isced3=1 and AICS = 4 ) WEIGHT1 = 2.1002041.  
if (sex = 2 and age13 = 9 and isced3=2 and AICS = 2 ) WEIGHT1 = 0.85523101.  
if (sex = 2 and age13 = 9 and isced3=2 and AICS = 3 ) WEIGHT1 = 1.79469256.  
if (sex = 2 and age13 = 9 and isced3=2 and AICS = 4 ) WEIGHT1 = 1.69222026.  
if (sex = 2 and age13 = 9 and isced3=3 and AICS = 2 ) WEIGHT1 = 0.49846956.  
if (sex = 2 and age13 = 9 and isced3=3 and AICS = 3 ) WEIGHT1 = 0.61851058.  
if (sex = 2 and age13 = 9 and isced3=3 and AICS = 4 ) WEIGHT1 = 1.23635279.  
if (sex = 2 and age13 = 10 and isced3=1 and AICS = 2 ) WEIGHT1 =1.07747276.  
if (sex = 2 and age13 = 10 and isced3=1 and AICS = 3 ) WEIGHT1 =3.49118746.  
if (sex = 2 and age13 = 10 and isced3=1 and AICS = 4 ) WEIGHT1 = 4.03877684.  
if (sex = 2 and age13 = 10 and isced3=2 and AICS = 1 ) WEIGHT1 = 4.62829569.  
if (sex = 2 and age13 = 10 and isced3=2 and AICS = 2 ) WEIGHT1 = 0.72869235.  
if (sex = 2 and age13 = 10 and isced3=2 and AICS = 3 ) WEIGHT1 = 1.79469256.  
if (sex = 2 and age13 = 10 and isced3=2 and AICS = 4 ) WEIGHT1 = 2.62519627.  
if (sex = 2 and age13 = 10 and isced3=3 and AICS = 2 ) WEIGHT1 = 1.36517485.  
if (sex = 2 and age13 = 10 and isced3=3 and AICS = 3 ) WEIGHT1 = 0.61851058.  
if (sex = 2 and age13 = 10 and isced3=3 and AICS = 4 ) WEIGHT1 = 2.41402656.  
if (sex = 2 and age13 = 11 and isced3=1 and AICS = 2 ) WEIGHT1 = 1.07747276.  
if (sex = 2 and age13 = 11 and isced3=1 and AICS = 3 ) WEIGHT1 =3.49118746.  
if (sex = 2 and age13 = 11 and isced3=1 and AICS = 4 ) WEIGHT1 = 4.03877684.  
if (sex = 2 and age13 = 11 and isced3=2 and AICS = 2 ) WEIGHT1 =0.72869235.  
if (sex = 2 and age13 = 12 and isced3=3 and AICS = 4 ) WEIGHT1 =2.41402656.

## 8. WEIGHTING THE DANISH DATA SET BY GENDER, AGE

### SECTOR OF ACTIVITY AND EDUACTIONAL LEVEL

```

***Generate age into 13 intervals
compute age13 = age.
var lab age13 'age recoded into 13 groups'.
val lab age13 1 '15 to 19' 2 '20 to 24' 3 '25 to 29' 4 '30 to 34' 5 '35 to 39' 6 '40 to
44' 7 '45 to 49' 8 '50 to 54' 9 '55 to 59' 10 '60 to 64' 11 '65 to 69' 12 '70 to 74' 13
'75 and over'.
recode age13 (15 thru 19 = 1) (20 thru 24 = 2) (25 thru 29 = 3) (30 thru 34 = 4)
(35 thru 39 = 5) (40 thru 44 = 6) (45 thru 49 = 7) (50 thru 54 = 8) (55 thru 59 =
9) (60 thru 64 = 10) (65 thru 69 = 11) (70 thru 74 = 12) (75 thru 99 = 13) (else
=sysmis).
execute.
fre age13.
***Generate nace letter codes into Agriculture, industry, construction and services
compute AICS = NACE1NUM.
var lab AICS 'NACE1NUM recoded into 4 groups'.
val lab AICS 1 'Agriculture' 2 'Industry' 3 'Construction' 4 'Services'.
recode AICS (1 thru 2 = 1) (3 thru 5 = 2) (6 = 3) (7 thru 17 = 4) (else =sysmis).
execute.
fre AICS.
***Generate Isced educational levels (from 0 to 6) into lower, medium and high
levels.
compute isced3 = EDUISCED.
var lab isced3 'EDUISCED recoded into 3 groups'.
val lab isced3 1 'Low' 2 'Medium' 3 'High'.
recode isced3 (0 thru 2 = 1) (3 thru 4 = 2) (5 thru 6 = 3) (else =sysmis).
execute.
fre isced3.

***Generate variable weight1.
compute WEIGHT1=SYSMIS.
for WEIGHT1 (f2.5)
VAR LAB WEIGHT1 'weights by sex, age13, isced3 and AICS'.
if (sex = 1 and age13 = 1 and isced3=1 and AICS = 1 ) WEIGHT1 =5.8206003.
if (sex = 1 and age13 = 1 and isced3=1 and AICS = 4 ) WEIGHT1 = 5.8206003.
if (sex = 1 and age13 = 1 and isced3=2 and AICS = 3 ) WEIGHT1 = 3.97528898.
if (sex = 1 and age13 = 1 and isced3=2 and AICS = 4 ) WEIGHT1 =3.97528898.
if (sex = 1 and age13 = 2 and isced3=1 and AICS = 4 ) WEIGHT1 = 5.8206003.
if (sex = 1 and age13 = 2 and isced3=2 and AICS = 1 ) WEIGHT1 = 3.97528898.
if (sex = 1 and age13 = 2 and isced3=2 and AICS = 4 ) WEIGHT1 = 3.97528898.
if (sex = 1 and age13 = 2 and isced3=3 and AICS = 2 ) WEIGHT1 = 0.77869844.
if (sex = 1 and age13 = 2 and isced3=3 and AICS = 4 ) WEIGHT1 =0.77869844.
if (sex = 1 and age13 = 3 and isced3=1 and AICS = 2 ) WEIGHT1 =0.89228643.
if (sex = 1 and age13 = 3 and isced3=1 and AICS = 4 ) WEIGHT1 =0.89228643.
if (sex = 1 and age13 = 3 and isced3=2 and AICS = 1 ) WEIGHT1 =0.80006851.
if (sex = 1 and age13 = 3 and isced3=2 and AICS = 2 ) WEIGHT1 =0.80006851.
if (sex = 1 and age13 = 3 and isced3=2 and AICS = 4 ) WEIGHT1 =2.91048548.
if (sex = 1 and age13 = 3 and isced3=3 and AICS = 1 ) WEIGHT1 =0.6040017.
if (sex = 1 and age13 = 3 and isced3=3 and AICS = 2 ) WEIGHT1 =0.6040017.
if (sex = 1 and age13 = 3 and isced3=3 and AICS = 4 ) WEIGHT1 =0.00077521.
if (sex = 1 and age13 = 4 and isced3=1 and AICS = 2 ) WEIGHT1 =0.89228643.

```

if (sex = 1 and age13 = 4 and isced3=1 and AICS = 4 ) WEIGHT1 =0.89228643.  
if (sex = 1 and age13 = 4 and isced3=2 and AICS = 1 ) WEIGHT1 =0.80006851.  
if (sex = 1 and age13 = 4 and isced3=2 and AICS = 2 ) WEIGHT1 =0.80006851.  
if (sex = 1 and age13 = 4 and isced3=2 and AICS = 4 ) WEIGHT1 =2.68836612.  
if (sex = 1 and age13 = 4 and isced3=3 and AICS = 2 ) WEIGHT1 =0.9318269.  
if (sex = 1 and age13 = 4 and isced3=3 and AICS = 3 ) WEIGHT1 =0.13442986.  
if (sex = 1 and age13 = 4 and isced3=3 and AICS = 4 ) WEIGHT1 =2.25143041.  
if (sex = 1 and age13 = 5 and isced3=1 and AICS = 2 ) WEIGHT1 =0.56254375.  
if (sex = 1 and age13 = 5 and isced3=1 and AICS = 4 ) WEIGHT1 =1.15784707.  
if (sex = 1 and age13 = 5 and isced3=2 and AICS = 2 ) WEIGHT1 =0.60886381.  
if (sex = 1 and age13 = 5 and isced3=2 and AICS = 4 ) WEIGHT1 =3.18583749.  
if (sex = 1 and age13 = 5 and isced3=3 and AICS = 1 ) WEIGHT1 = 0.22069005.  
if (sex = 1 and age13 = 5 and isced3=3 and AICS = 2 ) WEIGHT1 = 0.9318269.  
if (sex = 1 and age13 = 5 and isced3=3 and AICS = 3 ) WEIGHT1 = 0.13442986.  
if (sex = 1 and age13 = 5 and isced3=3 and AICS = 4 ) WEIGHT1 = 1.61497671.  
if (sex = 1 and age13 = 6 and isced3=1 and AICS = 1 ) WEIGHT1 = 0.13181074.  
if (sex = 1 and age13 = 6 and isced3=1 and AICS = 2 ) WEIGHT1 = 0.56254375.  
if (sex = 1 and age13 = 6 and isced3=1 and AICS = 4 ) WEIGHT1 = 1.15784707.  
if (sex = 1 and age13 = 6 and isced3=2 and AICS = 1 ) WEIGHT1 = 0.49513684.  
if (sex = 1 and age13 = 6 and isced3=2 and AICS = 2 ) WEIGHT1 = 0.88175018.  
if (sex = 1 and age13 = 6 and isced3=2 and AICS = 3 ) WEIGHT1 = 0.88175018.  
if (sex = 1 and age13 = 6 and isced3=2 and AICS = 4 ) WEIGHT1 = 2.44055009.  
if (sex = 1 and age13 = 6 and isced3=3 and AICS = 2 ) WEIGHT1 = 0.74269821.  
if (sex = 1 and age13 = 6 and isced3=3 and AICS = 4 ) WEIGHT1 = 1.92036351.  
if (sex = 1 and age13 = 7 and isced3=1 and AICS = 2 ) WEIGHT1 = 0.30248928.  
if (sex = 1 and age13 = 7 and isced3=1 and AICS = 3 ) WEIGHT1 = 0.30248928.  
if (sex = 1 and age13 = 7 and isced3=1 and AICS = 4 ) WEIGHT1 = 0.78350755.  
if (sex = 1 and age13 = 7 and isced3=2 and AICS = 1 ) WEIGHT1 = 0.49513684.  
if (sex = 1 and age13 = 7 and isced3=2 and AICS = 2 ) WEIGHT1 = 0.4531386.  
if (sex = 1 and age13 = 7 and isced3=2 and AICS = 4 ) WEIGHT1 = 1.64729211.  
if (sex = 1 and age13 = 7 and isced3=3 and AICS = 1 ) WEIGHT1 = 0.22069005.  
if (sex = 1 and age13 = 7 and isced3=3 and AICS = 2 ) WEIGHT1 = 0.74269821.  
if (sex = 1 and age13 = 7 and isced3=3 and AICS = 4 ) WEIGHT1 = 2.62723385.  
if (sex = 1 and age13 = 8 and isced3=1 and AICS = 1 ) WEIGHT1 =0.13181074.  
if (sex = 1 and age13 = 8 and isced3=1 and AICS = 2 ) WEIGHT1 =0.32895405.  
if (sex = 1 and age13 = 8 and isced3=1 and AICS = 4 ) WEIGHT1 =0.72768998.  
if (sex = 1 and age13 = 8 and isced3=2 and AICS = 2 ) WEIGHT1 =0.94073741.  
if (sex = 1 and age13 = 8 and isced3=2 and AICS = 3 ) WEIGHT1 =0.94073741.  
if (sex = 1 and age13 = 8 and isced3=2 and AICS = 4 ) WEIGHT1 =3.59475009.  
if (sex = 1 and age13 = 8 and isced3=3 and AICS = 1 ) WEIGHT1 =0.22069005.  
if (sex = 1 and age13 = 8 and isced3=3 and AICS = 2 ) WEIGHT1 =0.30227224.  
if (sex = 1 and age13 = 8 and isced3=3 and AICS = 4 ) WEIGHT1 =2.14499134.  
if (sex = 1 and age13 = 9 and isced3=1 and AICS = 1 ) WEIGHT1 =0.13181074.  
if (sex = 1 and age13 = 9 and isced3=1 and AICS = 2 ) WEIGHT1 =0.33256641.  
if (sex = 1 and age13 = 9 and isced3=2 and AICS = 4 ) WEIGHT1 =1.13175617.  
if (sex = 1 and age13 = 9 and isced3=2 and AICS = 2 ) WEIGHT1 = 0.49513684.  
if (sex = 1 and age13 = 9 and isced3=2 and AICS = 2 ) WEIGHT1 = 0.94073741.  
if (sex = 1 and age13 = 9 and isced3=2 and AICS = 3 ) WEIGHT1 = 0.94073741.  
if (sex = 1 and age13 = 9 and isced3=2 and AICS = 4 ) WEIGHT1 = 3.48502486.  
if (sex = 1 and age13 = 9 and isced3=3 and AICS = 2 ) WEIGHT1 = 0.30227224.  
if (sex = 1 and age13 = 9 and isced3=3 and AICS = 4 ) WEIGHT1 = 3.26908383.  
if (sex = 1 and age13 = 10 and isced3=1 and AICS = 2 ) WEIGHT1 =0.33256641.  
if (sex = 1 and age13 = 10 and isced3=1 and AICS = 4 ) WEIGHT1 =0.82482537.  
if (sex = 1 and age13 = 10 and isced3=2 and AICS = 2 ) WEIGHT1 = 0.94073741.  
if (sex = 1 and age13 = 10 and isced3=2 and AICS = 4 ) WEIGHT1 = 3.48502486.  
if (sex = 1 and age13 = 10 and isced3=3 and AICS = 4 ) WEIGHT1 = 3.26908383.

if (sex = 1 and age13 = 11 and isced3=3 and AICS = 4 ) WEIGHT1 = 3.26908383.  
if (sex = 2 and age13 = 1 and isced3=1 and AICS = 1 ) WEIGHT1 = 1.60725446.  
if (sex = 2 and age13 = 1 and isced3=1 and AICS = 3 ) WEIGHT1 = 1.60725446.  
if (sex = 2 and age13 = 1 and isced3=2 and AICS = 1 ) WEIGHT1 = 1.45038426.  
if (sex = 2 and age13 = 2 and isced3=1 and AICS = 2 ) WEIGHT1 = 1.60725446.  
if (sex = 2 and age13 = 2 and isced3=1 and AICS = 2 ) WEIGHT1 = 1.42391083.  
if (sex = 2 and age13 = 2 and isced3=1 and AICS = 3 ) WEIGHT1 = 1.60725446.  
if (sex = 2 and age13 = 2 and isced3=1 and AICS = 4 ) WEIGHT1 = 1.6281943.  
if (sex = 2 and age13 = 2 and isced3=2 and AICS = 1 ) WEIGHT1 = 1.45038426.  
if (sex = 2 and age13 = 2 and isced3=2 and AICS = 2 ) WEIGHT1 = 1.20441551.  
if (sex = 2 and age13 = 2 and isced3=2 and AICS = 3 ) WEIGHT1 = 2.37224073.  
if (sex = 2 and age13 = 2 and isced3=2 and AICS = 4 ) WEIGHT1 = 1.99830006.  
if (sex = 2 and age13 = 2 and isced3=3 and AICS = 4 ) WEIGHT1 = 1.27437768.  
if (sex = 2 and age13 = 3 and isced3=1 and AICS = 2 ) WEIGHT1 = 1.42391083.  
if (sex = 2 and age13 = 3 and isced3=1 and AICS = 3 ) WEIGHT1 = 0.76899313.  
if (sex = 2 and age13 = 3 and isced3=1 and AICS = 4 ) WEIGHT1 = 1.6281943.  
if (sex = 2 and age13 = 3 and isced3=2 and AICS = 1 ) WEIGHT1 = 1.45038426.  
if (sex = 2 and age13 = 3 and isced3=2 and AICS = 2 ) WEIGHT1 = 1.20441551.  
if (sex = 2 and age13 = 3 and isced3=2 and AICS = 3 ) WEIGHT1 = 2.37224073.  
if (sex = 2 and age13 = 3 and isced3=2 and AICS = 4 ) WEIGHT1 = 1.41429048.  
if (sex = 2 and age13 = 3 and isced3=3 and AICS = 2 ) WEIGHT1 = 1.86920705.  
if (sex = 2 and age13 = 3 and isced3=3 and AICS = 3 ) WEIGHT1 = 0.97321808.  
if (sex = 2 and age13 = 3 and isced3=3 and AICS = 4 ) WEIGHT1 = 1.27437768.  
if (sex = 2 and age13 = 4 and isced3=1 and AICS = 1 ) WEIGHT1 = 0.36285638.  
if (sex = 2 and age13 = 4 and isced3=1 and AICS = 2 ) WEIGHT1 = 1.42391083.  
if (sex = 2 and age13 = 4 and isced3=1 and AICS = 3 ) WEIGHT1 = 0.53312899.  
if (sex = 2 and age13 = 4 and isced3=1 and AICS = 4 ) WEIGHT1 = 0.66548472.  
if (sex = 2 and age13 = 4 and isced3=2 and AICS = 1 ) WEIGHT1 = 1.45038426.  
if (sex = 2 and age13 = 4 and isced3=2 and AICS = 2 ) WEIGHT1 = 1.08072052.  
if (sex = 2 and age13 = 4 and isced3=2 and AICS = 3 ) WEIGHT1 = 1.26812208.  
if (sex = 2 and age13 = 4 and isced3=2 and AICS = 4 ) WEIGHT1 = 1.30055146.  
if (sex = 2 and age13 = 4 and isced3=3 and AICS = 1 ) WEIGHT1 = 0.30085289.  
if (sex = 2 and age13 = 4 and isced3=3 and AICS = 2 ) WEIGHT1 = 1.86920705.  
if (sex = 2 and age13 = 4 and isced3=3 and AICS = 3 ) WEIGHT1 = 0.97321808.  
if (sex = 2 and age13 = 4 and isced3=3 and AICS = 4 ) WEIGHT1 = 1.50276376.  
if (sex = 2 and age13 = 5 and isced3=1 and AICS = 1 ) WEIGHT1 = 0.36285638.  
if (sex = 2 and age13 = 5 and isced3=1 and AICS = 2 ) WEIGHT1 = 0.73671354.  
if (sex = 2 and age13 = 5 and isced3=1 and AICS = 3 ) WEIGHT1 = 0.53312899.  
if (sex = 2 and age13 = 5 and isced3=1 and AICS = 4 ) WEIGHT1 = 0.44571245.  
if (sex = 2 and age13 = 5 and isced3=2 and AICS = 1 ) WEIGHT1 = 0.68572847.  
if (sex = 2 and age13 = 5 and isced3=2 and AICS = 2 ) WEIGHT1 = 0.74321235.  
if (sex = 2 and age13 = 5 and isced3=2 and AICS = 3 ) WEIGHT1 = 1.14424135.  
if (sex = 2 and age13 = 5 and isced3=2 and AICS = 4 ) WEIGHT1 = 1.32771964.  
if (sex = 2 and age13 = 5 and isced3=3 and AICS = 1 ) WEIGHT1 = 0.30085289.  
if (sex = 2 and age13 = 5 and isced3=3 and AICS = 2 ) WEIGHT1 = 0.57957686.  
if (sex = 2 and age13 = 5 and isced3=3 and AICS = 3 ) WEIGHT1 = 0.97321808.  
if (sex = 2 and age13 = 5 and isced3=3 and AICS = 4 ) WEIGHT1 = 1.16211235.  
if (sex = 2 and age13 = 6 and isced3=1 and AICS = 1 ) WEIGHT1 = 0.36285638.  
if (sex = 2 and age13 = 6 and isced3=1 and AICS = 2 ) WEIGHT1 = 0.26515775.  
if (sex = 2 and age13 = 6 and isced3=1 and AICS = 3 ) WEIGHT1 = 0.53312899.  
if (sex = 2 and age13 = 6 and isced3=1 and AICS = 4 ) WEIGHT1 = 0.36819698.  
if (sex = 2 and age13 = 6 and isced3=2 and AICS = 1 ) WEIGHT1 = 0.68572847.  
if (sex = 2 and age13 = 6 and isced3=2 and AICS = 2 ) WEIGHT1 = 0.51444863.  
if (sex = 2 and age13 = 6 and isced3=2 and AICS = 3 ) WEIGHT1 = 1.25269934.  
if (sex = 2 and age13 = 6 and isced3=2 and AICS = 4 ) WEIGHT1 = 0.69748548.  
if (sex = 2 and age13 = 6 and isced3=3 and AICS = 1 ) WEIGHT1 = 0.30085289.

if (sex = 2 and age13 = 6 and isced3=3 and AICS = 2 ) WEIGHT1 = 1.09047646.  
if (sex = 2 and age13 = 6 and isced3=3 and AICS = 3 ) WEIGHT1 = 0.97321808.  
if (sex = 2 and age13 = 6 and isced3=3 and AICS = 4 ) WEIGHT1 = 1.96348155.  
if (sex = 2 and age13 = 7 and isced3=1 and AICS = 1 ) WEIGHT1 =0.36285638.  
if (sex = 2 and age13 = 7 and isced3=1 and AICS = 2 ) WEIGHT1 =0.22792543.  
if (sex = 2 and age13 = 7 and isced3=1 and AICS = 3 ) WEIGHT1 =0.16571108.  
if (sex = 2 and age13 = 7 and isced3=1 and AICS = 4 ) WEIGHT1 =0.29676702.  
if (sex = 2 and age13 = 7 and isced3=2 and AICS = 1 ) WEIGHT1 =0.68572847.  
if (sex = 2 and age13 = 7 and isced3=2 and AICS = 2 ) WEIGHT1 =0.58590697.  
if (sex = 2 and age13 = 7 and isced3=2 and AICS = 3 ) WEIGHT1 =0.43244629.  
if (sex = 2 and age13 = 7 and isced3=2 and AICS = 4 ) WEIGHT1 =0.53303472.  
if (sex = 2 and age13 = 7 and isced3=3 and AICS = 1 ) WEIGHT1 =0.1573002.  
if (sex = 2 and age13 = 7 and isced3=3 and AICS = 2 ) WEIGHT1 =0.69478661.  
if (sex = 2 and age13 = 7 and isced3=3 and AICS = 3 ) WEIGHT1 =0.65616323.  
if (sex = 2 and age13 = 7 and isced3=3 and AICS = 4 ) WEIGHT1 =1.3162805.  
if (sex = 2 and age13 = 8 and isced3=1 and AICS = 1 ) WEIGHT1 =0.41534074.  
if (sex = 2 and age13 = 8 and isced3=1 and AICS = 2 ) WEIGHT1 =0.11681733.  
if (sex = 2 and age13 = 8 and isced3=1 and AICS = 3 ) WEIGHT1 =0.15196436.  
if (sex = 2 and age13 = 8 and isced3=1 and AICS = 4 ) WEIGHT1 =0.14950311.  
if (sex = 2 and age13 = 8 and isced3=2 and AICS = 1 ) WEIGHT1 =0.96446437.  
if (sex = 2 and age13 = 8 and isced3=2 and AICS = 2 ) WEIGHT1 =0.68748418.  
if (sex = 2 and age13 = 8 and isced3=2 and AICS = 3 ) WEIGHT1 =1.00218609.  
if (sex = 2 and age13 = 8 and isced3=2 and AICS = 4 ) WEIGHT1 =0.74291906.  
if (sex = 2 and age13 = 8 and isced3=3 and AICS = 1 ) WEIGHT1 =0.1573002.  
if (sex = 2 and age13 = 8 and isced3=3 and AICS = 2 ) WEIGHT1 =0.39491056.  
if (sex = 2 and age13 = 8 and isced3=3 and AICS = 3 ) WEIGHT1 =0.65616323.  
if (sex = 2 and age13 = 8 and isced3=3 and AICS = 4 ) WEIGHT1 =1.24211151.  
if (sex = 2 and age13 = 9 and isced3=1 and AICS = 1 ) WEIGHT1 = 0.41534074.  
if (sex = 2 and age13 = 9 and isced3=1 and AICS = 2 ) WEIGHT1 = 0.15808348.  
if (sex = 2 and age13 = 9 and isced3=1 and AICS = 3 ) WEIGHT1 = 0.26421281.  
if (sex = 2 and age13 = 9 and isced3=1 and AICS = 4 ) WEIGHT1 = 0.1583463.  
if (sex = 2 and age13 = 9 and isced3=1 and AICS = 1 ) WEIGHT1 = 0.96446437.  
if (sex = 2 and age13 = 9 and isced3=2 and AICS = 2 ) WEIGHT1 = 0.46560932.  
if (sex = 2 and age13 = 9 and isced3=2 and AICS = 3 ) WEIGHT1 = 1.00218609.  
if (sex = 2 and age13 = 9 and isced3=2 and AICS = 4 ) WEIGHT1 = 0.84573794.  
if (sex = 2 and age13 = 9 and isced3=3 and AICS = 2 ) WEIGHT1 = 0.38674559.  
if (sex = 2 and age13 = 9 and isced3=3 and AICS = 3 ) WEIGHT1 = 0.65616323.  
if (sex = 2 and age13 = 9 and isced3=3 and AICS = 4 ) WEIGHT1 = 1.45793202.  
if (sex = 2 and age13 = 10 and isced3=1 and AICS = 1 ) WEIGHT1 =0.41534074.  
if (sex = 2 and age13 = 10 and isced3=1 and AICS = 2 ) WEIGHT1 =0.09882604.  
if (sex = 2 and age13 = 10 and isced3=1 and AICS = 3 ) WEIGHT1 =0.09723923.  
if (sex = 2 and age13 = 10 and isced3=1 and AICS = 4 ) WEIGHT1 = 0.12366233.  
if (sex = 2 and age13 = 10 and isced3=2 and AICS = 1 ) WEIGHT1 =0.96446437.  
if (sex = 2 and age13 = 10 and isced3=2 and AICS = 2 ) WEIGHT1 =0.73980535.  
if (sex = 2 and age13 = 10 and isced3=2 and AICS = 3 ) WEIGHT1 =1.00218609.  
if (sex = 2 and age13 = 10 and isced3=2 and AICS = 4 ) WEIGHT1 =0.58124229.  
if (sex = 2 and age13 = 10 and isced3=3 and AICS = 1 ) WEIGHT1 = 0.1573002.  
if (sex = 2 and age13 = 10 and isced3=3 and AICS = 2 ) WEIGHT1 = 0.38674559.  
if (sex = 2 and age13 = 10 and isced3=3 and AICS = 3 ) WEIGHT1 = 0.65616323.  
if (sex = 2 and age13 = 10 and isced3=3 and AICS = 4 ) WEIGHT1 = 1.12855433.  
if (sex = 2 and age13 = 11 and isced3=1 and AICS = 2 ) WEIGHT1 = 0.09882604.  
if (sex = 2 and age13 = 11 and isced3=1 and AICS = 3 ) WEIGHT1 = 0.09723923.  
if (sex = 2 and age13 = 11 and isced3=1 and AICS = 4 ) WEIGHT1 = 0.12366233.  
if (sex = 2 and age13 = 11 and isced3=2 and AICS = 4 ) WEIGHT1 = 0.58124229.  
if (sex = 2 and age13 = 11 and isced3=3 and AICS = 4 ) WEIGHT1 = 0.25379139.  
if (sex = 2 and age13 = 12 and isced3=1 and AICS = 2 ) WEIGHT1 = 0.09882604.

---

if (sex = 2 and age13 = 12 and isced3=1 and AICS = 4 ) WEIGHT1 = 0.12366233.  
if (sex = 2 and age13 = 13 and isced3=1 and AICS = 1) WEIGHT1 = 0.41534074.

\*\*\*Note: the following observations should be deleted from the sample because there is no one in Denmark labour force (according to LFS) with these characteristics but the national *WageIndicator* data has 1 or more observations in its sample.

if (sex = 2 and age13 = 2 and isced3=3 and AICS = 1 ) WEIGHT1 = sysmis.  
if (sex = 2 and age13 = 2 and isced3=3 and AICS = 3 ) WEIGHT1 = sysmis.



## 9. WEIGHTING THE FINNISH DATA SET BY GENDER, AGE

### SECTOR OF ACTIVITY AND EDUCTIONAL LEVEL

```
***Generate age into 13 intervals
compute age13 = age.
var lab age13 'age recoded into 13 groups'.
val lab age13 1 '15 to 19' 2 '20 to 24' 3 '25 to 29' 4 '30 to 34' 5 '35 to 39' 6 '40 to
44' 7 '45 to 49' 8 '50 to 54' 9 '55 to 59' 10 '60 to 64' 11 '65 to 69' 12 '70 to 74' 13
'75 and over'.
recode age13 (15 thru 19 = 1) (20 thru 24 = 2) (25 thru 29 = 3) (30 thru 34 = 4)
(35 thru 39 = 5) (40 thru 44 = 6) (45 thru 49 = 7) (50 thru 54 = 8) (55 thru 59 =
9) (60 thru 64 = 10) (65 thru 69 = 11) (70 thru 74 = 12) (75 thru 99 = 13) (else
=sysmis).
execute.
fre age13.
```

```
***Generate nace letter codes into Agriculture, industry, construction and services
compute AICS = NACE1NUM.
var lab AICS 'NACE1NUM recoded into 4 groups'.
val lab AICS 1 'Agriculture' 2 'Industry' 3 'Construction' 4 'Services'.
recode AICS (1 thru 2 = 1) (3 thru 5 = 2) (6 = 3) (7 thru 17 = 4) (else =sysmis).
execute.
fre AICS.
```

```
***Generate Isced educational levels (from 0 to 6) into lower, medium and high
levels
compute isced3 = EDUISCED.
var lab isced3 'EDUISCED recoded into 3 groups'.
val lab isced3 1 'Low' 2 'Medium' 3 'High'.
recode isced3 (0 thru 2 = 1) (3 thru 4 = 2) (5 thru 6 = 3) (else =sysmis).
execute.
fre isced3.
```

```
***Generate variable weight1
compute WEIGHT1=SYSMIS.
for WEIGHT1 (f2.5)
VAR LAB WEIGHT1 'weights by sex, age13, isced3 and AICS'.
if (sex = 1 and age13 = 1 and isced3=1 and AICS = 2)WEIGHT1 = 4.07843431.
if (sex = 1 and age13 = 1 and isced3=1 and AICS = 3) WEIGHT1 =4.07843431.
if (sex = 1 and age13 = 1 and isced3=1 and AICS = 4 ) WEIGHT1 =4.07843431.
if (sex = 1 and age13 = 1 and isced3=2 and AICS = 2 ) WEIGHT1 =2.11550996.
if (sex = 1 and age13 = 1 and isced3=2 and AICS = 4) WEIGHT1 =2.11550996.
if (sex = 1 and age13 = 2 and isced3=1 and AICS = 1 ) WEIGHT1 =0.6645512.
if (sex = 1 and age13 = 2 and isced3=1 and AICS = 2 ) WEIGHT1 =0.1899562.
if (sex = 1 and age13 = 2 and isced3=1 and AICS = 3 ) WEIGHT1 =0.04830358.
if (sex = 1 and age13 = 2 and isced3=1 and AICS = 4 ) WEIGHT1 =0.27959667.
if (sex = 1 and age13 = 2 and isced3=2 and AICS = 1 ) WEIGHT1 =1.19889785.
if (sex = 1 and age13 = 2 and isced3=2 and AICS = 2 ) WEIGHT1 =1.01387302.
if (sex = 1 and age13 = 2 and isced3=2 and AICS = 3 ) WEIGHT1 =0.30929528.
if (sex = 1 and age13 = 2 and isced3=2 and AICS = 4 ) WEIGHT1 =1.17444013.
if (sex = 1 and age13 = 2 and isced3=3 and AICS = 2 ) WEIGHT1 =0.14594765.
if (sex = 1 and age13 = 2 and isced3=3 and AICS = 3 ) WEIGHT1 =0.72239904.
if (sex = 1 and age13 = 2 and isced3=3 and AICS = 4 ) WEIGHT1 =0.97880257.
```

if (sex = 1 and age13 = 3 and isced3=1 and AICS = 1 ) WEIGHT1 = 0.6645512.  
if (sex = 1 and age13 = 3 and isced3=1 and AICS = 2 ) WEIGHT1 = 0.05302263.  
if (sex = 1 and age13 = 3 and isced3=1 and AICS = 3) WEIGHT1 = 0.04830358.  
if (sex = 1 and age13 = 3 and isced3=1 and AICS = 4 ) WEIGHT1 = 0.16662603.  
if (sex = 1 and age13 = 3 and isced3=2 and AICS = 1 ) WEIGHT1 = 1.19889785.  
if (sex = 1 and age13 = 3 and isced3=2 and AICS = 2 ) WEIGHT1 = 0.28256426.  
if (sex = 1 and age13 = 3 and isced3=2 and AICS = 3 ) WEIGHT1 = 0.30929528.  
if (sex = 1 and age13 = 3 and isced3=2 and AICS = 4 ) WEIGHT1 = 0.37151345.  
if (sex = 1 and age13 = 3 and isced3=3 and AICS = 1 ) WEIGHT1 = 0.72003587.  
if (sex = 1 and age13 = 3 and isced3=3 and AICS = 2 ) WEIGHT1 =0.72003587.  
if (sex = 1 and age13 = 3 and isced3=3 and AICS = 3 ) WEIGHT1 =0.72239904.  
if (sex = 1 and age13 = 3 and isced3=3 and AICS = 4 ) WEIGHT1 =1.12918272.  
if (sex = 1 and age13 = 4 and isced3=1 and AICS = 1) WEIGHT1 =0.6645512.  
if (sex = 1 and age13 = 4 and isced3=1 and AICS = 2) WEIGHT1 =0.12623964.  
if (sex = 1 and age13 = 4 and isced3=1 and AICS = 3) WEIGHT1 =0.3911622.  
if (sex = 1 and age13 = 4 and isced3=1 and AICS = 4) WEIGHT1 = 0.15337277.  
if (sex = 1 and age13 = 4 and isced3=2 and AICS = 1 ) WEIGHT1 = 2.56216087.  
if (sex = 1 and age13 = 4 and isced3=2 and AICS = 2 ) WEIGHT1 = 0.29282449.  
if (sex = 1 and age13 = 4 and isced3=2 and AICS = 3 ) WEIGHT1 = 0.38875083.  
if (sex = 1 and age13 = 4 and isced3=2 and AICS = 4 ) WEIGHT1 = 0.36257476.  
if (sex = 1 and age13 = 4 and isced3=3 and AICS = 1 ) WEIGHT1 = 0.75923243.  
if (sex = 1 and age13 = 4 and isced3=3 and AICS = 2 ) WEIGHT1 = 0.75923243.  
if (sex = 1 and age13 = 4 and isced3=3 and AICS = 3 ) WEIGHT1 = 0.75923243.  
if (sex = 1 and age13 = 4 and isced3=3 and AICS = 4 ) WEIGHT1 = 1.33436197.  
if (sex = 1 and age13 = 5 and isced3=1 and AICS = 1 ) WEIGHT1 =0.37649622.  
if (sex = 1 and age13 = 5 and isced3=1 and AICS = 2 ) WEIGHT1 =0.00016517.  
if (sex = 1 and age13 = 5 and isced3=1 and AICS = 3 ) WEIGHT1 =0.3911622.  
if (sex = 1 and age13 = 5 and isced3=1 and AICS = 4 ) WEIGHT1 =0.24652979.  
if (sex = 1 and age13 = 5 and isced3=2 and AICS = 1) WEIGHT1 =2.56216087.  
if (sex = 1 and age13 = 5 and isced3=2 and AICS = 2 ) WEIGHT1 =0.31548099.  
if (sex = 1 and age13 = 5 and isced3=2 and AICS = 3 ) WEIGHT1 =0.17633831.  
if (sex = 1 and age13 = 5 and isced3=2 and AICS = 4 ) WEIGHT1 =0.48247122.  
if (sex = 1 and age13 = 5 and isced3=3 and AICS = 2 ) WEIGHT1 =1.28039982.  
if (sex = 1 and age13 = 5 and isced3=3 and AICS = 3 ) WEIGHT1 =1.28039982.  
if (sex = 1 and age13 = 5 and isced3=3 and AICS = 4 ) WEIGHT1 =2.16235973.  
if (sex = 1 and age13 = 6 and isced3=1 and AICS = 1 ) WEIGHT1 =0.37649622.  
if (sex = 1 and age13 = 6 and isced3=1 and AICS = 2 ) WEIGHT1 =0.29302099.  
if (sex = 1 and age13 = 6 and isced3=1 and AICS = 3 ) WEIGHT1 =0.02129857.  
if (sex = 1 and age13 = 6 and isced3=1 and AICS = 4 ) WEIGHT1 =0.25376247.  
if (sex = 1 and age13 = 6 and isced3=2 and AICS = 1 ) WEIGHT1 =2.56216087.  
if (sex = 1 and age13 = 6 and isced3=2 and AICS = 2 ) WEIGHT1 =0.50189744.  
if (sex = 1 and age13 = 6 and isced3=2 and AICS = 3 ) WEIGHT1 =0.22287554.  
if (sex = 1 and age13 = 6 and isced3=2 and AICS = 4 ) WEIGHT1 =0.54304303.  
if (sex = 1 and age13 = 6 and isced3=3 and AICS = 2 ) WEIGHT1 =1.4485824.  
if (sex = 1 and age13 = 6 and isced3=3 and AICS = 3 ) WEIGHT1 =1.4485824.  
if (sex = 1 and age13 = 6 and isced3=3 and AICS = 4 ) WEIGHT1 =2.96195194.  
if (sex = 1 and age13 = 7 and isced3=1 and AICS = 1 ) WEIGHT1 =3.12736321.  
if (sex = 1 and age13 = 7 and isced3=1 and AICS = 2 ) WEIGHT1 =0.42297054.  
if (sex = 1 and age13 = 7 and isced3=1 and AICS = 3 ) WEIGHT1 =0.86312072.  
if (sex = 1 and age13 = 7 and isced3=1 and AICS = 4 ) WEIGHT1 =0.47014088.  
if (sex = 1 and age13 = 7 and isced3=2 and AICS = 1 ) WEIGHT1 =2.67605972.  
if (sex = 1 and age13 = 7 and isced3=2 and AICS = 2 ) WEIGHT1 =0.79124976.  
if (sex = 1 and age13 = 7 and isced3=2 and AICS = 3 ) WEIGHT1 =0.1939268.  
if (sex = 1 and age13 = 7 and isced3=2 and AICS = 4 ) WEIGHT1 =0.80787504.  
if (sex = 1 and age13 = 7 and isced3=3 and AICS = 2 ) WEIGHT1 =0.4047448.  
if (sex = 1 and age13 = 7 and isced3=3 and AICS = 3 ) WEIGHT1 =0.4047448.

if (sex = 1 and age13 = 7 and isced3=3 and AICS = 4 ) WEIGHT1 =4.44348129.  
if (sex = 1 and age13 = 8 and isced3=1 and AICS = 1) WEIGHT1 = 3.12736321.  
if (sex = 1 and age13 = 8 and isced3=1 and AICS = 2) WEIGHT1 = 0.73166095.  
if (sex = 1 and age13 = 8 and isced3=1 and AICS = 3) WEIGHT1 = 0.86312072.  
if (sex = 1 and age13 = 8 and isced3=1 and AICS = 4 ) WEIGHT1 = 0.81546651.  
if (sex = 1 and age13 = 8 and isced3=2 and AICS = 1 ) WEIGHT1 = 2.67605972.  
if (sex = 1 and age13 = 8 and isced3=2 and AICS = 2 ) WEIGHT1 = 1.25599659.  
if (sex = 1 and age13 = 8 and isced3=2 and AICS = 3 ) WEIGHT1 = 0.76116199.  
if (sex = 1 and age13 = 8 and isced3=2 and AICS = 4 ) WEIGHT1 = 1.11299877.  
if (sex = 1 and age13 = 8 and isced3=3 and AICS = 2) WEIGHT1 = 1.42018448.  
if (sex = 1 and age13 = 8 and isced3=3 and AICS = 4) WEIGHT1 =3.02873968.  
if (sex = 1 and age13 = 9 and isced3=1 and AICS = 1) WEIGHT1 =3.12736321.  
if (sex = 1 and age13 = 9 and isced3=1 and AICS = 2 ) WEIGHT1 =1.70458171.  
if (sex = 1 and age13 = 9 and isced3=1 and AICS = 3 ) WEIGHT1 =0.86312072.  
if (sex = 1 and age13 = 9 and isced3=1 and AICS = 4 ) WEIGHT1 =1.35362434.  
if (sex = 1 and age13 = 9 and isced3=2 and AICS = 1 ) WEIGHT1 =2.67605972.  
if (sex = 1 and age13 = 9 and isced3=2 and AICS = 2 ) WEIGHT1 =1.73622528.  
if (sex = 1 and age13 = 9 and isced3=2 and AICS = 3 ) WEIGHT1 =0.76116199.  
if (sex = 1 and age13 = 9 and isced3=2 and AICS = 4 ) WEIGHT1 =1.4846978.  
if (sex = 1 and age13 = 9 and isced3=3 and AICS = 2 ) WEIGHT1 =1.75602809.  
if (sex = 1 and age13 = 9 and isced3=3 and AICS = 4 ) WEIGHT1 =4.14418324.  
if (sex = 1 and age13 = 10 and isced3=1 and AICS = 2 ) WEIGHT1 =0.92496459.  
if (sex = 1 and age13 = 10 and isced3=1 and AICS = 4 ) WEIGHT1 =1.93236324.  
if (sex = 1 and age13 = 10 and isced3=2 and AICS = 2) WEIGHT1 = 1.73622528.  
if (sex = 1 and age13 = 10 and isced3=2 and AICS = 4 ) WEIGHT1 = 2.22961825.  
if (sex = 1 and age13 = 10 and isced3=3 and AICS = 2) WEIGHT1 = 1.75602809.  
if (sex = 1 and age13 = 10 and isced3=3 and AICS = 4 ) WEIGHT1 = 4.25529148.  
if (sex = 1 and age13 = 11 and isced3=3 and AICS = 4 ) WEIGHT1 =4.25529148.  
if (sex = 1 and age13 = 12 and isced3=1 and AICS = 4) WEIGHT1 =1.93236324.  
if (sex = 2 and age13 = 1 and isced3=1 and AICS = 2 ) WEIGHT1 = 6.11395969.  
if (sex = 2 and age13 = 1 and isced3=1 and AICS = 3 ) WEIGHT1 = 6.11395969.  
if (sex = 2 and age13 = 1 and isced3=1 and AICS = 4 ) WEIGHT1 = 6.11395969.  
if (sex = 2 and age13 = 1 and isced3=2 and AICS = 2 ) WEIGHT1 = 2.80673253.  
if (sex = 2 and age13 = 1 and isced3=2 and AICS = 3 ) WEIGHT1 = 2.80673253.  
if (sex = 2 and age13 = 1 and isced3=2 and AICS = 4 ) WEIGHT1 = 2.80673253.  
if (sex = 2 and age13 = 2 and isced3=1 and AICS = 1 ) WEIGHT1 = 3.90876121.  
if (sex = 2 and age13 = 2 and isced3=1 and AICS = 2 ) WEIGHT1 = 0.20296626.  
if (sex = 2 and age13 = 2 and isced3=1 and AICS = 3 ) WEIGHT1 = 0.51418048.  
if (sex = 2 and age13 = 2 and isced3=1 and AICS = 4 ) WEIGHT1 = 0.49892806.  
if (sex = 2 and age13 = 2 and isced3=2 and AICS = 1 ) WEIGHT1 = 3.5916102.  
if (sex = 2 and age13 = 2 and isced3=2 and AICS = 2 ) WEIGHT1 = 2.88912651.  
if (sex = 2 and age13 = 2 and isced3=2 and AICS = 3 ) WEIGHT1 = 3.55954668.  
if (sex = 2 and age13 = 2 and isced3=2 and AICS = 4 ) WEIGHT1 = 2.17294364.  
if (sex = 2 and age13 = 2 and isced3=3 and AICS = 2 ) WEIGHT1 = 0.89981897.  
if (sex = 2 and age13 = 2 and isced3=3 and AICS = 4 ) WEIGHT1 = 0.18068767.  
if (sex = 2 and age13 = 3 and isced3=1 and AICS = 1 ) WEIGHT1 = 3.90876121.  
if (sex = 2 and age13 = 3 and isced3=1 and AICS = 2 ) WEIGHT1 = 0.09991042.  
if (sex = 2 and age13 = 3 and isced3=1 and AICS = 3 ) WEIGHT1 = 0.43138605.  
if (sex = 2 and age13 = 3 and isced3=1 and AICS = 4 ) WEIGHT1 = 0.21363522.  
if (sex = 2 and age13 = 3 and isced3=2 and AICS = 1 ) WEIGHT1 = 3.5916102.  
if (sex = 2 and age13 = 3 and isced3=2 and AICS = 2 ) WEIGHT1 = 0.95177747.  
if (sex = 2 and age13 = 3 and isced3=2 and AICS = 3 ) WEIGHT1 = 3.55954668.  
if (sex = 2 and age13 = 3 and isced3=2 and AICS = 4 ) WEIGHT1 = 0.71816098.  
if (sex = 2 and age13 = 3 and isced3=3 and AICS = 1 ) WEIGHT1 = 2.51455588.  
if (sex = 2 and age13 = 3 and isced3=3 and AICS = 2 ) WEIGHT1 = 0.89981897.  
if (sex = 2 and age13 = 3 and isced3=3 and AICS = 3 ) WEIGHT1 = 2.51455588.

if (sex = 2 and age13 = 3 and isced3=3 and AICS = 4 ) WEIGHT1 = 0.62618738.  
if (sex = 2 and age13 = 4 and isced3=1 and AICS = 1 ) WEIGHT1 = 3.90876121.  
if (sex = 2 and age13 = 4 and isced3=1 and AICS = 2 ) WEIGHT1 = 0.13794032.  
if (sex = 2 and age13 = 4 and isced3=1 and AICS = 3 ) WEIGHT1 = 0.43572078.  
if (sex = 2 and age13 = 4 and isced3=1 and AICS = 4 ) WEIGHT1 = 0.28205064.  
if (sex = 2 and age13 = 4 and isced3=2 and AICS = 1 ) WEIGHT1 = 3.5916102.  
if (sex = 2 and age13 = 4 and isced3=2 and AICS = 2 ) WEIGHT1 = 0.7602387.  
if (sex = 2 and age13 = 4 and isced3=2 and AICS = 3 ) WEIGHT1 = 1.29880542.  
if (sex = 2 and age13 = 4 and isced3=2 and AICS = 4 ) WEIGHT1 = 0.55112717.  
if (sex = 2 and age13 = 4 and isced3=3 and AICS = 1 ) WEIGHT1 = 2.51455588.  
if (sex = 2 and age13 = 4 and isced3=3 and AICS = 2 ) WEIGHT1 = 1.0555575.  
if (sex = 2 and age13 = 4 and isced3=3 and AICS = 3 ) WEIGHT1 = 2.51455588.  
if (sex = 2 and age13 = 4 and isced3=3 and AICS = 4 ) WEIGHT1 = 0.80828242.  
if (sex = 2 and age13 = 5 and isced3=1 and AICS = 1 ) WEIGHT1 = 0.61151636.  
if (sex = 2 and age13 = 5 and isced3=1 and AICS = 2 ) WEIGHT1 =0.13799478.  
if (sex = 2 and age13 = 5 and isced3=1 and AICS = 3 ) WEIGHT1 =0.97739291.  
if (sex = 2 and age13 = 5 and isced3=1 and AICS = 4 ) WEIGHT1 =0.4159587.  
if (sex = 2 and age13 = 5 and isced3=2 and AICS = 1 ) WEIGHT1 = 3.5916102.  
if (sex = 2 and age13 = 5 and isced3=2 and AICS = 2 ) WEIGHT1 =1.01794596.  
if (sex = 2 and age13 = 5 and isced3=2 and AICS = 3 ) WEIGHT1 =2.52234283.  
if (sex = 2 and age13 = 5 and isced3=2 and AICS = 4 ) WEIGHT1 =0.72843237.  
if (sex = 2 and age13 = 5 and isced3=3 and AICS = 1 ) WEIGHT1 =2.16825667.  
if (sex = 2 and age13 = 5 and isced3=3 and AICS = 2 ) WEIGHT1 =2.16825667.  
if (sex = 2 and age13 = 5 and isced3=3 and AICS = 3 ) WEIGHT1 =2.16825667.  
if (sex = 2 and age13 = 5 and isced3=3 and AICS = 4 ) WEIGHT1 =1.42093818.  
if (sex = 2 and age13 = 6 and isced3=1 and AICS = 1 ) WEIGHT1 = 5.89447699.  
if (sex = 2 and age13 = 6 and isced3=1 and AICS = 2 ) WEIGHT1 = 0.26143926.  
if (sex = 2 and age13 = 6 and isced3=1 and AICS = 3 ) WEIGHT1 = 0.70992118.  
if (sex = 2 and age13 = 6 and isced3=1 and AICS = 4 ) WEIGHT1 = 0.51587288.  
if (sex = 2 and age13 = 6 and isced3=2 and AICS = 1 ) WEIGHT1 = 13.4591677.  
if (sex = 2 and age13 = 6 and isced3=2 and AICS = 2 ) WEIGHT1 = 2.01821654.  
if (sex = 2 and age13 = 6 and isced3=2 and AICS = 3 ) WEIGHT1 = 3.30660203.  
if (sex = 2 and age13 = 6 and isced3=2 and AICS = 4 ) WEIGHT1 = 0.97015161.  
if (sex = 2 and age13 = 6 and isced3=3 and AICS = 2 ) WEIGHT1 = 4.21507382.  
if (sex = 2 and age13 = 6 and isced3=3 and AICS = 3 ) WEIGHT1 = 4.21507382.  
if (sex = 2 and age13 = 6 and isced3=3 and AICS = 4 ) WEIGHT1 = 2.18338443.  
if (sex = 2 and age13 = 7 and isced3=1 and AICS = 1 ) WEIGHT1 = 5.89447699.  
if (sex = 2 and age13 = 7 and isced3=1 and AICS = 2 ) WEIGHT1 = 0.5587789.  
if (sex = 2 and age13 = 7 and isced3=1 and AICS = 3 ) WEIGHT1 = 1.15204474.  
if (sex = 2 and age13 = 7 and isced3=1 and AICS = 4 ) WEIGHT1 = 1.03151744.  
if (sex = 2 and age13 = 7 and isced3=2 and AICS = 1 ) WEIGHT1 = 13.4591677.  
if (sex = 2 and age13 = 7 and isced3=2 and AICS = 2 ) WEIGHT1 = 1.78842011.  
if (sex = 2 and age13 = 7 and isced3=2 and AICS = 3 ) WEIGHT1 = 7.03832546.  
if (sex = 2 and age13 = 7 and isced3=2 and AICS = 4 ) WEIGHT1 = 1.23669523.  
if (sex = 2 and age13 = 7 and isced3=3 and AICS = 2 ) WEIGHT1 =3.39842991.  
if (sex = 2 and age13 = 7 and isced3=3 and AICS = 4 ) WEIGHT1 =2.95678056.  
if (sex = 2 and age13 = 8 and isced3=1 and AICS = 1 ) WEIGHT1 =5.89447699.  
if (sex = 2 and age13 = 8 and isced3=1 and AICS = 2 ) WEIGHT1 =0.82471071.  
if (sex = 2 and age13 = 8 and isced3=1 and AICS = 3 ) WEIGHT1 =1.83671306.  
if (sex = 2 and age13 = 8 and isced3=1 and AICS = 4 ) WEIGHT1 =1.67882212.  
if (sex = 2 and age13 = 8 and isced3=2 and AICS = 1 ) WEIGHT1 = 13.4591677.  
if (sex = 2 and age13 = 8 and isced3=2 and AICS = 2 ) WEIGHT1 =2.63148977.  
if (sex = 2 and age13 = 8 and isced3=2 and AICS = 3 ) WEIGHT1 =4.5981934.  
if (sex = 2 and age13 = 8 and isced3=2 and AICS = 4 ) WEIGHT1 =1.41685249.  
if (sex = 2 and age13 = 8 and isced3=3 and AICS = 2 ) WEIGHT1 =7.26300201.  
if (sex = 2 and age13 = 8 and isced3=3 and AICS = 3 ) WEIGHT1 =7.26300201.

if (sex = 2 and age13 = 8 and isced3=3 and AICS = 4 ) WEIGHT1 =3.27943359.  
if (sex = 2 and age13 = 9 and isced3=1 and AICS = 2 ) WEIGHT1 =0.96886214.  
if (sex = 2 and age13 = 9 and isced3=1 and AICS = 3 ) WEIGHT1 =2.31257086.  
if (sex = 2 and age13 = 9 and isced3=1 and AICS = 4 ) WEIGHT1 =1.84923212.  
if (sex = 2 and age13 = 9 and isced3=2 and AICS = 1 ) WEIGHT1 = 13.4591677.  
if (sex = 2 and age13 = 9 and isced3=2 and AICS = 2 ) WEIGHT1 = 3.10540723.  
if (sex = 2 and age13 = 9 and isced3=2 and AICS = 3 ) WEIGHT1 = 2.57127027.  
if (sex = 2 and age13 = 9 and isced3=2 and AICS = 4 ) WEIGHT1 = 1.7715371.  
if (sex = 2 and age13 = 9 and isced3=3 and AICS = 1 ) WEIGHT1 = 6.6796652.  
if (sex = 2 and age13 = 9 and isced3=3 and AICS = 2 ) WEIGHT1 = 4.89879446.  
if (sex = 2 and age13 = 9 and isced3=3 and AICS = 3 ) WEIGHT1 = 6.6796652.  
if (sex = 2 and age13 = 9 and isced3=3 and AICS = 4 ) WEIGHT1 = 3.48027516.  
if (sex = 2 and age13 = 10 and isced3=1 and AICS = 1 ) WEIGHT1 = 5.89447699.  
if (sex = 2 and age13 = 10 and isced3=1 and AICS = 2 ) WEIGHT1 = 1.35773409.  
if (sex = 2 and age13 = 10 and isced3=1 and AICS = 3 ) WEIGHT1 =2.31257086.  
if (sex = 2 and age13 = 10 and isced3=1 and AICS = 4 ) WEIGHT1 =2.90514478.  
if (sex = 2 and age13 = 10 and isced3=2 and AICS = 1 ) WEIGHT1 =13.4591677.  
if (sex = 2 and age13 = 10 and isced3=2 and AICS = 2 ) WEIGHT1 =1.57692767.  
if (sex = 2 and age13 = 10 and isced3=2 and AICS = 3 ) WEIGHT1 =2.57127027.  
if (sex = 2 and age13 = 10 and isced3=2 and AICS = 4 ) WEIGHT1 =2.08196085.  
if (sex = 2 and age13 = 10 and isced3=3 and AICS = 2 ) WEIGHT1 =4.89879446.  
if (sex = 2 and age13 = 10 and isced3=3 and AICS = 4 ) WEIGHT1 =3.8309876.  
if (sex = 2 and age13 = 11 and isced3=1 and AICS = 3 ) WEIGHT1 =2.31257086.  
if (sex = 2 and age13 = 11 and isced3=1 and AICS = 4 ) WEIGHT1 =2.90514478.  
if (sex = 2 and age13 = 11 and isced3=2 and AICS = 2 ) WEIGHT1 = 1.57692767.  
if (sex = 2 and age13 = 11 and isced3=2 and AICS = 4 ) WEIGHT1 = 2.08196085.  
if (sex = 2 and age13 = 11 and isced3=3 and AICS = 2 ) WEIGHT1 = 4.89879446.  
if (sex = 2 and age13 = 11 and isced3=3 and AICS = 4 ) WEIGHT1 = 3.8309876.

\*\*\*Note: the following observations should be deleted from the sample because there is no one in the Finnish labour force (according to LFS) with these characteristics but the national *WageIndicator* dataset has 1 or more observations in its sample with these characteristics:

if (sex = 1 and age13 = 13 and isced3=1 and AICS = 2 ) WEIGHT1 = sysmis.  
if (sex = 2 and age13 = 1 and isced3=3 and AICS = 2 ) WEIGHT1 = sysmis.  
if (sex = 2 and age13 = 1 and isced3=3 and AICS = 3 ) WEIGHT1 = sysmis.  
if (sex = 2 and age13 = 1 and isced3=3 and AICS = 4 ) WEIGHT1 = sysmis.  
if (sex = 2 and age13 = 2 and isced3=3 and AICS = 3 ) WEIGHT1 = sysmis.  
if (sex = 2 and age13 = 13 and isced3=1 and AICS = 4 ) WEIGHT1 = sysmis.

## 10. WEIGHTING THE UNITED KINGDOM DATA SET BY GENDER, AGE SECTOR OF ACTIVITY AND EDUACTIONAL LEVEL

```
***Generate age into 13 intervals
compute age13 = age.
var lab age13 'age recoded into 13 groups'.
val lab age13 1 '15 to 19' 2 '20 to 24' 3 '25 to 29' 4 '30 to 34' 5 '35 to 39' 6 '40 to
44' 7 '45 to 49' 8 '50 to 54' 9 '55 to 59' 10 '60 to 64' 11 '65 to 69' 12 '70 to 74' 13
'75 and over'.
recode age13 (15 thru 19 = 1) (20 thru 24 = 2) (25 thru 29 = 3) (30 thru 34 = 4)
(35 thru 39 = 5) (40 thru 44 = 6) (45 thru 49 = 7) (50 thru 54 = 8) (55 thru 59 =
9) (60 thru 64 = 10) (65 thru 69 = 11) (70 thru 74 = 12) (75 thru 99 = 13) (else
=sysmis).
execute.
fre age13.
```

```
***Generate nace letter codes into Agriculture, industry, construction and services
compute AICS = NACE1NUM.
var lab AICS 'NACE1NUM recoded into 4 groups'.
val lab AICS 1 'Agriculture' 2 'Industry' 3 'Construction' 4 'Services'.
recode AICS (1 thru 2 = 1) (3 thru 5 = 2) (6 = 3) (7 thru 17 = 4) (else =sysmis).
execute.
fre AICS.
```

```
***Generate Isced educational levels (from 0 to 6) into lower, medium and high
levels
compute isced3 = EDUISCED.
var lab isced3 'EDUISCED recoded into 3 groups'.
val lab isced3 1 'Low' 2 'Medium' 3 'High'.
recode isced3 (0 thru 2 = 1) (3 thru 4 = 2) (5 thru 6 = 3) (else =sysmis).
execute.
fre isced3.
```

```
***Generate variable weight1
compute WEIGHT1=SYSMIS.
for WEIGHT1 (f2.5)
VAR LAB WEIGHT1 'weights by sex, age13, isced3 and AICS'.
if (sex = 1 and age13 = 1 and isced3=1 and AICS = 1) WEIGHT1 =11.3190556.
if (sex = 1 and age13 = 1 and isced3=1 and AICS = 2) WEIGHT1 =11.3190556.
if (sex = 1 and age13 = 1 and isced3=1 and AICS = 4) WEIGHT1 =11.3190556.
if (sex = 1 and age13 = 1 and isced3=2 and AICS = 1) WEIGHT1 =1.47593746.
if (sex = 1 and age13 = 1 and isced3=2 and AICS = 2) WEIGHT1 =0.5915094.
if (sex = 1 and age13 = 1 and isced3=2 and AICS = 3) WEIGHT1 =0.39874327.
if (sex = 1 and age13 = 1 and isced3=2 and AICS = 4) WEIGHT1 =1.58572872.
if (sex = 1 and age13 = 1 and isced3=3 and AICS = 2 ) WEIGHT1 =0.23385872.
if (sex = 1 and age13 = 1 and isced3=3 and AICS = 4 ) WEIGHT1 = 0.28281615.
if (sex = 1 and age13 = 2 and isced3=1 and AICS = 2 ) WEIGHT1 = 2.84255489.
if (sex = 1 and age13 = 2 and isced3=1 and AICS = 3 ) WEIGHT1 = 1.29867656.
if (sex = 1 and age13 = 2 and isced3=1 and AICS = 4 ) WEIGHT1 = 2.16503659.
```

if (sex = 1 and age13 = 2 and isced3=2 and AICS = 1 ) WEIGHT1 = 1.47593746.  
if (sex = 1 and age13 = 2 and isced3=2 and AICS = 2 ) WEIGHT1 =0.5915094.  
if (sex = 1 and age13 = 2 and isced3=2 and AICS = 3 ) WEIGHT1 =0.1873466.  
if (sex = 1 and age13 = 2 and isced3=2 and AICS = 4 ) WEIGHT1 =0.62831286.  
if (sex = 1 and age13 = 3 and isced3=1 and AICS = 1 ) WEIGHT1 =0.23931423.  
if (sex = 1 and age13 = 3 and isced3=1 and AICS = 2 ) WEIGHT1 =0.23385872.  
if (sex = 1 and age13 = 3 and isced3=1 and AICS = 3) WEIGHT1 =0.20605051.  
if (sex = 1 and age13 = 3 and isced3=1 and AICS = 4 ) WEIGHT1 =0.47922639.  
if (sex = 1 and age13 = 3 and isced3=1 and AICS = 2 ) WEIGHT1 = 2.84255489.  
if (sex = 1 and age13 = 3 and isced3=1 and AICS = 3 ) WEIGHT1 = 1.29867656.  
if (sex = 1 and age13 = 3 and isced3=1 and AICS = 4 ) WEIGHT1 = 1.59671849.  
if (sex = 1 and age13 = 3 and isced3=2 and AICS = 1 ) WEIGHT1 = 1.47593746.  
if (sex = 1 and age13 = 3 and isced3=2 and AICS = 2 ) WEIGHT1 = 0.38535271.  
if (sex = 1 and age13 = 3 and isced3=2 and AICS = 3 ) WEIGHT1 = 0.25059473.  
if (sex = 1 and age13 = 3 and isced3=2 and AICS = 4 ) WEIGHT1 = 0.52097663.  
if (sex = 1 and age13 = 3 and isced3=3 and AICS = 1 ) WEIGHT1 = 0.23931423.  
if (sex = 1 and age13 = 3 and isced3=3 and AICS = 2 ) WEIGHT1 = 0.20243068.  
if (sex = 1 and age13 = 3 and isced3=3 and AICS = 3 ) WEIGHT1 = 0.1467644.  
if (sex = 1 and age13 = 3 and isced3=3 and AICS = 4 ) WEIGHT1 = 0.3686903.  
if (sex = 1 and age13 = 4 and isced3=1 and AICS = 2) WEIGHT1 = 2.01432639.  
if (sex = 1 and age13 = 4 and isced3=1 and AICS = 3) WEIGHT1 = 1.29867656.  
if (sex = 1 and age13 = 4 and isced3=1 and AICS = 4) WEIGHT1 = 2.31460649.  
if (sex = 1 and age13 = 4 and isced3=2 and AICS = 1 ) WEIGHT1 = 1.47593746.  
if (sex = 1 and age13 = 4 and isced3=2 and AICS = 2 ) WEIGHT1 = 0.62062066.  
if (sex = 1 and age13 = 4 and isced3=2 and AICS = 3 ) WEIGHT1 = 0.24614167.  
if (sex = 1 and age13 = 4 and isced3=2 and AICS = 4 ) WEIGHT1 = 0.70979117.  
if (sex = 1 and age13 = 4 and isced3=3 and AICS = 1 ) WEIGHT1 = 0.23931423.  
if (sex = 1 and age13 = 4 and isced3=3 and AICS = 2 ) WEIGHT1 = 0.32609379.  
if (sex = 1 and age13 = 4 and isced3=3 and AICS = 3 ) WEIGHT1 = 0.26864002.  
if (sex = 1 and age13 = 4 and isced3=3 and AICS = 4 ) WEIGHT1 = 0.54907694.  
if (sex = 1 and age13 = 5 and isced3=1 and AICS = 1 ) WEIGHT1 =2.63108882.  
if (sex = 1 and age13 = 5 and isced3=1 and AICS = 2 ) WEIGHT1 =2.63108882.  
if (sex = 1 and age13 = 5 and isced3=1 and AICS = 3 ) WEIGHT1 =1.29867656.  
if (sex = 1 and age13 = 5 and isced3=1 and AICS = 4 ) WEIGHT1 =1.90751886.  
if (sex = 1 and age13 = 5 and isced3=2 and AICS = 1) WEIGHT1 =1.47593746.  
if (sex = 1 and age13 = 5 and isced3=2 and AICS = 2 ) WEIGHT1 =0.59146215.  
if (sex = 1 and age13 = 5 and isced3=2 and AICS = 3 ) WEIGHT1 =0.38871044.  
if (sex = 1 and age13 = 5 and isced3=2 and AICS = 4 ) WEIGHT1 =0.93733483.  
if (sex = 1 and age13 = 5 and isced3=3 and AICS = 1 ) WEIGHT1 = 0.47944425.  
if (sex = 1 and age13 = 5 and isced3=3 and AICS = 2 ) WEIGHT1 = 0.47944425.  
if (sex = 1 and age13 = 5 and isced3=3 and AICS = 3 ) WEIGHT1 = 0.25292897.  
if (sex = 1 and age13 = 5 and isced3=3 and AICS = 4 ) WEIGHT1 = 0.81717155.  
if (sex = 1 and age13 = 6 and isced3=1 and AICS = 2 ) WEIGHT1 = 3.03141364.  
if (sex = 1 and age13 = 6 and isced3=1 and AICS = 3 ) WEIGHT1 = 1.44862095.  
if (sex = 1 and age13 = 6 and isced3=1 and AICS = 4 ) WEIGHT1 = 2.69225067.  
if (sex = 1 and age13 = 6 and isced3=2 and AICS = 1 ) WEIGHT1 = 0.89066154.  
if (sex = 1 and age13 = 6 and isced3=2 and AICS = 2 ) WEIGHT1 = 0.59191725.  
if (sex = 1 and age13 = 6 and isced3=2 and AICS = 3 ) WEIGHT1 = 0.42995367.  
if (sex = 1 and age13 = 6 and isced3=2 and AICS = 4 ) WEIGHT1 = 1.03290395.  
if (sex = 1 and age13 = 6 and isced3=3 and AICS = 1 ) WEIGHT1 = 0.7436607.  
if (sex = 1 and age13 = 6 and isced3=3 and AICS = 2 ) WEIGHT1 = 0.7436607.  
if (sex = 1 and age13 = 6 and isced3=3 and AICS = 3 ) WEIGHT1 = 0.28962277.  
if (sex = 1 and age13 = 6 and isced3=3 and AICS = 4 ) WEIGHT1 = 0.98106116.  
if (sex = 1 and age13 = 7 and isced3=1 and AICS = 2 ) WEIGHT1 = 3.48180208.  
if (sex = 1 and age13 = 7 and isced3=1 and AICS = 3 ) WEIGHT1 = 1.44862095.  
if (sex = 1 and age13 = 7 and isced3=1 and AICS = 4 ) WEIGHT1 = 3.17071236.

if (sex = 1 and age13 = 7 and isced3=2 and AICS = 1 ) WEIGHT1 = 0.89066154.  
if (sex = 1 and age13 = 7 and isced3=2 and AICS = 2 ) WEIGHT1 = 0.57640611.  
if (sex = 1 and age13 = 7 and isced3=2 and AICS = 3 ) WEIGHT1 = 0.60129753.  
if (sex = 1 and age13 = 7 and isced3=2 and AICS = 4 ) WEIGHT1 = 1.10570126.  
if (sex = 1 and age13 = 7 and isced3=3 and AICS = 1 ) WEIGHT1 = 0.54413326.  
if (sex = 1 and age13 = 7 and isced3=3 and AICS = 2 ) WEIGHT1 = 0.54413326.  
if (sex = 1 and age13 = 7 and isced3=3 and AICS = 3 ) WEIGHT1 = 0.23444121.  
if (sex = 1 and age13 = 7 and isced3=3 and AICS = 4 ) WEIGHT1 = 1.16269551.  
if (sex = 1 and age13 = 8 and isced3=1 and AICS = 2) WEIGHT1 = 2.3132723.  
if (sex = 1 and age13 = 8 and isced3=1 and AICS = 3) WEIGHT1 = 1.38788902.  
if (sex = 1 and age13 = 8 and isced3=1 and AICS = 4 ) WEIGHT1 = 2.73881003.  
if (sex = 1 and age13 = 8 and isced3=2 and AICS = 1 ) WEIGHT1 = 0.89066154.  
if (sex = 1 and age13 = 8 and isced3=2 and AICS = 2 ) WEIGHT1 = 0.51352223.  
if (sex = 1 and age13 = 8 and isced3=2 and AICS = 3 ) WEIGHT1 = 0.68459673.  
if (sex = 1 and age13 = 8 and isced3=2 and AICS = 4 ) WEIGHT1 = 36888.1703.  
if (sex = 1 and age13 = 8 and isced3=3 and AICS = 1) WEIGHT1 = 0.45963015.  
if (sex = 1 and age13 = 8 and isced3=3 and AICS = 2) WEIGHT1 = 0.45963015.  
if (sex = 1 and age13 = 8 and isced3=3 and AICS = 3) WEIGHT1 = 0.26384465.  
if (sex = 1 and age13 = 8 and isced3=3 and AICS = 4) WEIGHT1 = 1.30477358.  
if (sex = 1 and age13 = 9 and isced3=1 and AICS = 2 ) WEIGHT1 =2.3132723.  
if (sex = 1 and age13 = 9 and isced3=1 and AICS = 3 ) WEIGHT1 =1.38788902.  
if (sex = 1 and age13 = 9 and isced3=1 and AICS = 4 ) WEIGHT1 =3.57505531.  
if (sex = 1 and age13 = 9 and isced3=2 and AICS = 2 ) WEIGHT1 =1.55851183.  
if (sex = 1 and age13 = 9 and isced3=2 and AICS = 3 ) WEIGHT1 =0.68459673.  
if (sex = 1 and age13 = 9 and isced3=2 and AICS = 4 ) WEIGHT1 =1.87336269.  
if (sex = 1 and age13 = 9 and isced3=3 and AICS = 2 ) WEIGHT1 = 0.79010523.  
if (sex = 1 and age13 = 9 and isced3=3 and AICS = 3 ) WEIGHT1 = 0.26384465.  
if (sex = 1 and age13 = 9 and isced3=3 and AICS = 4 ) WEIGHT1 = 1.75405717.  
if (sex = 1 and age13 = 10 and isced3=1 and AICS = 2 ) WEIGHT1 = 2.3132723.  
if (sex = 1 and age13 = 10 and isced3=1 and AICS = 3 ) WEIGHT1 = 1.38788902.  
if (sex = 1 and age13 = 10 and isced3=1 and AICS = 4 ) WEIGHT1 = 6.3469356.  
if (sex = 1 and age13 = 10 and isced3=2 and AICS = 2) WEIGHT1 = 1.55851183.  
if (sex = 1 and age13 = 10 and isced3=2 and AICS = 3) WEIGHT1 = 0.68459673.  
if (sex = 1 and age13 = 10 and isced3=2 and AICS = 4) WEIGHT1 = 5.42422174.  
if (sex = 1 and age13 = 10 and isced3=3 and AICS = 2) WEIGHT1 = 0.79010523.  
if (sex = 1 and age13 = 10 and isced3=3 and AICS = 4 ) WEIGHT1 = 3.36520806.  
if (sex = 1 and age13 = 11 and isced3=1 and AICS = 4 ) WEIGHT1 =6.3469356.  
if (sex = 1 and age13 = 11 and isced3=2 and AICS = 4 ) WEIGHT1 =5.42422174.  
if (sex = 1 and age13 = 11 and isced3=3 and AICS = 4 ) WEIGHT1 = 3.36520806.  
if (sex = 1 and age13 = 12 and isced3=2 and AICS = 4) WEIGHT1 = 5.42422174.  
if (sex = 1 and age13 = 12 and isced3=3 and AICS = 4) WEIGHT1 = 3.36520806.  
if (sex = 2 and age13 = 1 and isced3=1 and AICS = 2 ) WEIGHT1 =21.1964718.  
if (sex = 2 and age13 = 1 and isced3=1 and AICS = 3 ) WEIGHT1 =21.1964718.  
if (sex = 2 and age13 = 1 and isced3=1 and AICS = 4 ) WEIGHT1 = 21.1964718.  
if (sex = 2 and age13 = 1 and isced3=2 and AICS = 1 ) WEIGHT1 = 3.37080576.  
if (sex = 2 and age13 = 1 and isced3=2 and AICS = 2 ) WEIGHT1 = 3.37080576.  
if (sex = 2 and age13 = 1 and isced3=2 and AICS = 3 ) WEIGHT1 = 3.37080576.  
if (sex = 2 and age13 = 1 and isced3=2 and AICS = 4 ) WEIGHT1 = 2.26276442.  
if (sex = 2 and age13 = 1 and isced3=3 and AICS = 2 ) WEIGHT1 = 0.47075875.  
if (sex = 2 and age13 = 1 and isced3=3 and AICS = 3 ) WEIGHT1 = 0.35173613.  
if (sex = 2 and age13 = 1 and isced3=3 and AICS = 4 ) WEIGHT1 = 0.30307076.  
if (sex = 2 and age13 = 2 and isced3=1 and AICS = 2 ) WEIGHT1 = 3.73212362.  
if (sex = 2 and age13 = 2 and isced3=1 and AICS = 3 ) WEIGHT1 = 4.60481935.  
if (sex = 2 and age13 = 2 and isced3=1 and AICS = 4 ) WEIGHT1 = 3.64485462.  
if (sex = 2 and age13 = 2 and isced3=2 and AICS = 1 ) WEIGHT1 = 2.7468331.  
if (sex = 2 and age13 = 2 and isced3=2 and AICS = 2 ) WEIGHT1 = 1.77987696.



if (sex = 2 and age13 = 2 and isced3=2 and AICS = 3 ) WEIGHT1 = 2.75419981.  
if (sex = 2 and age13 = 2 and isced3=2 and AICS = 4 ) WEIGHT1 = 0.84406015.  
if (sex = 2 and age13 = 2 and isced3=3 and AICS = 1 ) WEIGHT1 = 0.31893069.  
if (sex = 2 and age13 = 2 and isced3=3 and AICS = 2 ) WEIGHT1 = 0.47075875.  
if (sex = 2 and age13 = 2 and isced3=3 and AICS = 3 ) WEIGHT1 = 0.35173613.  
if (sex = 2 and age13 = 2 and isced3=3 and AICS = 4 ) WEIGHT1 = 0.55601568.  
if (sex = 2 and age13 = 3 and isced3=1 and AICS = 1 ) WEIGHT1 =4.60481935.  
if (sex = 2 and age13 = 3 and isced3=1 and AICS = 2 ) WEIGHT1 =3.73212362.  
if (sex = 2 and age13 = 3 and isced3=1 and AICS = 3 ) WEIGHT1 =4.60481935.  
if (sex = 2 and age13 = 3 and isced3=1 and AICS = 4 ) WEIGHT1 =2.26941384.  
if (sex = 2 and age13 = 3 and isced3=2 and AICS = 1 ) WEIGHT1 =2.7468331.  
if (sex = 2 and age13 = 3 and isced3=2 and AICS = 2 ) WEIGHT1 =0.9361432.  
if (sex = 2 and age13 = 3 and isced3=2 and AICS = 3 ) WEIGHT1 =2.09239289.  
if (sex = 2 and age13 = 3 and isced3=2 and AICS = 4 ) WEIGHT1 =0.77824485.  
if (sex = 2 and age13 = 3 and isced3=3 and AICS = 1 ) WEIGHT1 =0.31893069.  
if (sex = 2 and age13 = 3 and isced3=3 and AICS = 2 ) WEIGHT1 =0.31291059.  
if (sex = 2 and age13 = 3 and isced3=3 and AICS = 3 ) WEIGHT1 =0.25453478.  
if (sex = 2 and age13 = 3 and isced3=3 and AICS = 4 ) WEIGHT1 =0.36572204.  
if (sex = 2 and age13 = 4 and isced3=1 and AICS = 2 ) WEIGHT1 =2.61413945.  
if (sex = 2 and age13 = 4 and isced3=1 and AICS = 3 ) WEIGHT1 =4.60481935.  
if (sex = 2 and age13 = 4 and isced3=1 and AICS = 4 ) WEIGHT1 =2.13540701.  
if (sex = 2 and age13 = 4 and isced3=2 and AICS = 1 ) WEIGHT1 =2.7468331.  
if (sex = 2 and age13 = 4 and isced3=2 and AICS = 2 ) WEIGHT1 =1.17282659.  
if (sex = 2 and age13 = 4 and isced3=2 and AICS = 3 ) WEIGHT1 =2.41776128.  
if (sex = 2 and age13 = 4 and isced3=2 and AICS = 4 ) WEIGHT1 =0.81699384.  
if (sex = 2 and age13 = 4 and isced3=3 and AICS = 1 ) WEIGHT1 = 0.6204721.  
if (sex = 2 and age13 = 4 and isced3=3 and AICS = 2 ) WEIGHT1 =0.35285447.  
if (sex = 2 and age13 = 4 and isced3=3 and AICS = 3 ) WEIGHT1 =0.34710056.  
if (sex = 2 and age13 = 4 and isced3=3 and AICS = 4 ) WEIGHT1 =0.44258201.  
if (sex = 2 and age13 = 5 and isced3=1 and AICS = 1 ) WEIGHT1 = 2.885657.  
if (sex = 2 and age13 = 5 and isced3=1 and AICS = 2 ) WEIGHT1 = 1.59463414.  
if (sex = 2 and age13 = 5 and isced3=1 and AICS = 3 ) WEIGHT1 = 2.06732958.  
if (sex = 2 and age13 = 5 and isced3=1 and AICS = 4 ) WEIGHT1 = 1.44879814.  
if (sex = 2 and age13 = 5 and isced3=2 and AICS = 1 ) WEIGHT1 = 1.71487522.  
if (sex = 2 and age13 = 5 and isced3=2 and AICS = 2 ) WEIGHT1 = 1.00237798.  
if (sex = 2 and age13 = 5 and isced3=2 and AICS = 3 ) WEIGHT1 = 2.43628205.  
if (sex = 2 and age13 = 5 and isced3=2 and AICS = 4 ) WEIGHT1 = 0.95498254.  
if (sex = 2 and age13 = 5 and isced3=3 and AICS = 1 ) WEIGHT1 = 0.6204721.  
if (sex = 2 and age13 = 5 and isced3=3 and AICS = 2 ) WEIGHT1 = 0.37816947.  
if (sex = 2 and age13 = 5 and isced3=3 and AICS = 3 ) WEIGHT1 = 0.4326156.  
if (sex = 2 and age13 = 5 and isced3=3 and AICS = 4 ) WEIGHT1 = 0.55453729.  
if (sex = 2 and age13 = 6 and isced3=1 and AICS = 1 ) WEIGHT1 = 2.885657.  
if (sex = 2 and age13 = 6 and isced3=1 and AICS = 2 ) WEIGHT1 = 1.60894883.  
if (sex = 2 and age13 = 6 and isced3=1 and AICS = 3 ) WEIGHT1 = 1.42666613.  
if (sex = 2 and age13 = 6 and isced3=1 and AICS = 4 ) WEIGHT1 = 1.82744128.  
if (sex = 2 and age13 = 6 and isced3=2 and AICS = 1 ) WEIGHT1 = 1.71487522.  
if (sex = 2 and age13 = 6 and isced3=2 and AICS = 2 ) WEIGHT1 = 1.37187532.  
if (sex = 2 and age13 = 6 and isced3=2 and AICS = 3 ) WEIGHT1 = 2.91847935.  
if (sex = 2 and age13 = 6 and isced3=2 and AICS = 4 ) WEIGHT1 = 1.10929172.  
if (sex = 2 and age13 = 6 and isced3=3 and AICS = 1 ) WEIGHT1 = 0.80170613.  
if (sex = 2 and age13 = 6 and isced3=3 and AICS = 2 ) WEIGHT1 = 0.46581624.  
if (sex = 2 and age13 = 6 and isced3=3 and AICS = 3 ) WEIGHT1 = 0.49659359.  
if (sex = 2 and age13 = 6 and isced3=3 and AICS = 4 ) WEIGHT1 = 0.78110678.  
if (sex = 2 and age13 = 7 and isced3=1 and AICS = 1 ) WEIGHT1 =2.885657.  
if (sex = 2 and age13 = 7 and isced3=1 and AICS = 2 ) WEIGHT1 =1.31743004.  
if (sex = 2 and age13 = 7 and isced3=1 and AICS = 3 ) WEIGHT1 =1.56052183.

```
if (sex = 2 and age13 = 7 and isced3=1 and AICS = 4 ) WEIGHT1 =1.55833334.
if (sex = 2 and age13 = 7 and isced3=2 and AICS = 1 ) WEIGHT1 =3.33168861.
if (sex = 2 and age13 = 7 and isced3=2 and AICS = 2 ) WEIGHT1 =1.8834061.
if (sex = 2 and age13 = 7 and isced3=2 and AICS = 3 ) WEIGHT1 =5.10848091.
if (sex = 2 and age13 = 7 and isced3=2 and AICS = 4 ) WEIGHT1 =1.30524341.
if (sex = 2 and age13 = 7 and isced3=3 and AICS = 1 ) WEIGHT1 =0.80170613.
if (sex = 2 and age13 = 7 and isced3=3 and AICS = 2 ) WEIGHT1 =0.51357107.
if (sex = 2 and age13 = 7 and isced3=3 and AICS = 3 ) WEIGHT1 =0.59335244.
if (sex = 2 and age13 = 7 and isced3=3 and AICS = 4 ) WEIGHT1 =0.84884536.
if (sex = 2 and age13 = 8 and isced3=1 and AICS = 1 ) WEIGHT1 =4.30972096.
if (sex = 2 and age13 = 8 and isced3=1 and AICS = 2 ) WEIGHT1 =1.26893304.
if (sex = 2 and age13 = 8 and isced3=1 and AICS = 3 ) WEIGHT1 =2.14376019.
if (sex = 2 and age13 = 8 and isced3=1 and AICS = 4 ) WEIGHT1 =0.94887263.
if (sex = 2 and age13 = 8 and isced3=2 and AICS = 1 ) WEIGHT1 =3.33168861.
if (sex = 2 and age13 = 8 and isced3=2 and AICS = 2 ) WEIGHT1 =2.20381477.
if (sex = 2 and age13 = 8 and isced3=2 and AICS = 3 ) WEIGHT1 =5.42740658.
if (sex = 2 and age13 = 8 and isced3=2 and AICS = 4 ) WEIGHT1 =1.96129257.
if (sex = 2 and age13 = 8 and isced3=3 and AICS = 1 ) WEIGHT1 =0.80170613.
if (sex = 2 and age13 = 8 and isced3=3 and AICS = 2 ) WEIGHT1 =0.56894959.
if (sex = 2 and age13 = 8 and isced3=3 and AICS = 3 ) WEIGHT1 =0.56387601.
if (sex = 2 and age13 = 8 and isced3=3 and AICS = 4 ) WEIGHT1 =1.08017062.
if (sex = 2 and age13 = 9 and isced3=1 and AICS = 1 ) WEIGHT1 = 4.30972096.
if (sex = 2 and age13 = 9 and isced3=1 and AICS = 2 ) WEIGHT1 = 1.07374541.
if (sex = 2 and age13 = 9 and isced3=1 and AICS = 3 ) WEIGHT1 = 1.36099385.
if (sex = 2 and age13 = 9 and isced3=1 and AICS = 4 ) WEIGHT1 = 1.62809833.
if (sex = 2 and age13 = 9 and isced3=2 and AICS = 1 ) WEIGHT1 = 3.33168861.
if (sex = 2 and age13 = 9 and isced3=2 and AICS = 2 ) WEIGHT1 = 2.33858993.
if (sex = 2 and age13 = 9 and isced3=2 and AICS = 3 ) WEIGHT1 = 7.08314635.
if (sex = 2 and age13 = 9 and isced3=2 and AICS = 4 ) WEIGHT1 = 2.48920836.
if (sex = 2 and age13 = 9 and isced3=3 and AICS = 1 ) WEIGHT1 = 0.80170613.
if (sex = 2 and age13 = 9 and isced3=3 and AICS = 2 ) WEIGHT1 = 0.62550536.
if (sex = 2 and age13 = 9 and isced3=3 and AICS = 3 ) WEIGHT1 = 0.78459024.
if (sex = 2 and age13 = 9 and isced3=3 and AICS = 4 ) WEIGHT1 = 1.61967522.
if (sex = 2 and age13 = 10 and isced3=1 and AICS = 1 ) WEIGHT1= 4.30972096.
if (sex = 2 and age13 = 10 and isced3=1 and AICS = 2 ) WEIGHT1 = 1.73042594.
if (sex = 2 and age13 = 10 and isced3=1 and AICS = 3 ) WEIGHT1 = 2.31713072.
if (sex = 2 and age13 = 10 and isced3=1 and AICS = 4 ) WEIGHT1 = 1.65566861.
if (sex = 2 and age13 = 10 and isced3=2 and AICS = 1 ) WEIGHT1 = 3.33168861.
if (sex = 2 and age13 = 10 and isced3=2 and AICS = 2 ) WEIGHT1 = 3.35505537.
if (sex = 2 and age13 = 10 and isced3=2 and AICS = 3 ) WEIGHT1 = 7.08314635.
if (sex = 2 and age13 = 10 and isced3=2 and AICS = 4 ) WEIGHT1 = 3.37036479.
if (sex = 2 and age13 = 10 and isced3=3 and AICS = 2 ) WEIGHT1 = 0.8711622.
if (sex = 2 and age13 = 10 and isced3=3 and AICS = 3 ) WEIGHT1 = 0.66442682.
if (sex = 2 and age13 = 10 and isced3=3 and AICS = 4 ) WEIGHT1 = 1.75791203.
if (sex = 2 and age13 = 11 and isced3=1 and AICS = 2 ) WEIGHT1 = 1.73042594.
if (sex = 2 and age13 = 11 and isced3=1 and AICS = 3 ) WEIGHT1 = 2.31713072.
if (sex = 2 and age13 = 11 and isced3=1 and AICS = 4 ) WEIGHT1 = 5.47026623.
if (sex = 2 and age13 = 11 and isced3=2 and AICS = 2 ) WEIGHT1 = 3.35505537.
if (sex = 2 and age13 = 11 and isced3=2 and AICS = 3 ) WEIGHT1 = 7.08314635.
if (sex = 2 and age13 = 11 and isced3=2 and AICS = 4 ) WEIGHT1 = 9.37804978.
if (sex = 2 and age13 = 11 and isced3=3 and AICS = 2 ) WEIGHT1 = 0.8711622.
if (sex = 2 and age13 = 11 and isced3=3 and AICS = 3 ) WEIGHT1 = 0.66442682.
if (sex = 2 and age13 = 11 and isced3=3 and AICS = 4 ) WEIGHT1 = 6.81054031.
if (sex = 2 and age13 = 12 and isced3=1 and AICS = 2 ) WEIGHT1 = 1.73042594.
if (sex = 2 and age13 = 12 and isced3=1 and AICS = 4 ) WEIGHT1 = 5.47026623.
if (sex = 2 and age13 = 12 and isced3=2 and AICS = 2 ) WEIGHT1 = 3.35505537.
```

if (sex = 2 and age13 = 12 and isced3=2 and AICS = 3 ) WEIGHT1 = 7.08314635.  
if (sex = 2 and age13 = 12 and isced3=2 and AICS = 4 ) WEIGHT1 = 9.37804978.  
if (sex = 2 and age13 = 12 and isced3=3 and AICS = 2 ) WEIGHT1 = 0.8711622.  
if (sex = 2 and age13 = 12 and isced3=3 and AICS = 4 ) WEIGHT1 = 6.81054031.  
if (sex = 2 and age13 = 13 and isced3=1 and AICS = 3 ) WEIGHT1 = 2.31713072.  
if (sex = 2 and age13 = 13 and isced3=1 and AICS = 4 ) WEIGHT1 = 5.47026623.  
if (sex = 2 and age13 = 13 and isced3=2 and AICS = 3 ) WEIGHT1 = 7.08314635.  
if (sex = 2 and age13 = 13 and isced3=2 and AICS = 4 ) WEIGHT1 = 9.37804978.  
if (sex = 2 and age13 = 13 and isced3=3 and AICS = 4 ) WEIGHT1 = 6.81054031.

\*\*\*\*Note: the following observations should be deleted from the sample because there is no one in the UK labour force (according to LFS) with these characteristics but the national *WageIndicator* dataset has 1 or more observations in its sample with these characteristics:

if (sex = 1 and age13 = 2 and isced3=1 and AICS = 3 ) WEIGHT1 = sysmis..  
if (sex = 2 and age13 = 2 and isced3=1 and AICS = 1 ) WEIGHT1 = sysmis..

## 11. WEIGHTING THE NETHERLANDS DATA SET BY GENDER, AGE SECTOR OF ACTIVITY AND EDUATIONAL LEVEL

```

comp HRSWEIGH3=HRSWAG1.
for HRSWEIGH3 (f2).
var lab HRSWEIGH3 'Working hrs pw in 3 groups for weight (if hrswag missing,
hrsweigh3=hrsrea)'.
val lab HRSWEIGH3 1 '<12 hr' 2 '12-34 hr' 3 '>= 35'.
execute.
if (sysmis(HRSWEIGH3)) HRSWEIGH3=HRSWAG.
execute.
if (sysmis(HRSWEIGH3)) HRSWEIGH3=hrsrea.
execute.
recode HRSWEIGH3 (0 thru 11.999=1)(12 thru 34.999=2)(35 thru hi=3).
execute.
if (sysmis(HRSWEIGH3) and HRShisto=1) HRSWEIGH3=3.
execute.
if (sysmis(HRSWEIGH3) and HRShisto=0) HRSWEIGH3=2.
execute.
fre HRSWEIGH3.

```

```

compute AGEGR3=AGE.
format AGEGR3 (F2).
var lab AGEGR3 'age in 3 groups'.
val lab AGEGR3 1 '< 25' 2 '25-44' 3 '>=45'.
recode AGEGR3 (lo thru 24=1)(25 thru 44=2)(45 thru hi=3).
execute.
if (sysmis(AGEGR3) and contst>19 and contst<26) AGEGR3 =1.
exe.
if (sysmis(AGEGR3) and chld =1 and (surveyy - YYOLCHLD <15)) AGEGR3 =2.
exe.
if (sysmis(AGEGR3) and chld =1 and (surveyy - YYOLCHLD >14)) AGEGR3 =3.
exe.
fre AGEGR3.

```

\*\*\* weights for NL.

```

if (sex=2 and AGEGR3 = 1 and SURVEYY >2004 and HRSWEIGH3 = 1 ) WEIGHT1= 5.755077.
if (sex= 1 and AGEGR3 = 1 and SURVEYY >2004 and HRSWEIGH3 = 1 ) WEIGHT1= 2.184602.
if (sex=2 and AGEGR3 = 1 and SURVEYY >2004 and HRSWEIGH3 = 2 ) WEIGHT1= 1.826869.
if (sex= 1 and AGEGR3 = 1 and SURVEYY >2004 and HRSWEIGH3 = 2 ) WEIGHT1= 0.766352.
if (sex=2 and AGEGR3 = 1 and SURVEYY >2004 and HRSWEIGH3 = 3 ) WEIGHT1= 0.67499.
if (sex= 1 and AGEGR3 = 1 and SURVEYY >2004 and HRSWEIGH3 = 3 ) WEIGHT1= 0.245498.
if (sex=2 and AGEGR3 = 2 and SURVEYY >2004 and HRSWEIGH3 = 1 ) WEIGHT1= 1.102498.
if (sex= 1 and AGEGR3 = 2 and SURVEYY >2004 and HRSWEIGH3 = 1 ) WEIGHT1= 3.565217.
if (sex=2 and AGEGR3 = 2 and SURVEYY >2004 and HRSWEIGH3 = 2 ) WEIGHT1= 1.783467.
if (sex= 1 and AGEGR3 = 2 and SURVEYY >2004 and HRSWEIGH3 = 2 ) WEIGHT1= 1.347994.
if (sex=2 and AGEGR3 = 2 and SURVEYY >2004 and HRSWEIGH3 = 3 ) WEIGHT1= 0.838995.
if (sex= 1 and AGEGR3 = 2 and SURVEYY >2004 and HRSWEIGH3 = 3 ) WEIGHT1= 0.364359.
if (sex=2 and AGEGR3 = 3 and SURVEYY >2004 and HRSWEIGH3 = 1 ) WEIGHT1= 2.453622.
if (sex= 1 and AGEGR3 = 3 and SURVEYY >2004 and HRSWEIGH3 = 1 ) WEIGHT1= 8.144992.

```

---

if (sex=2 and AGEGR3 = 3 and SURVEYY >2004 and HRSWEIGH3 = 2 ) WEIGHT1= 3.408737.  
if (sex= 1 and AGEGR3 = 3 and SURVEYY >2004 and HRSWEIGH3 = 2 ) WEIGHT1= 2.60792.  
if (sex=2 and AGEGR3 = 3 and SURVEYY >2004 and HRSWEIGH3 = 3 ) WEIGHT1= 1.535542.  
if (sex= 1 and AGEGR3 = 3 and SURVEYY >2004 and HRSWEIGH3 = 3 ) WEIGHT1= 0.677882.